

A Better Brand of Bull!

42nd Annual Bull Sale

March 28, 2024 - Bridgeport, NE

*Selling 167 Registered Red Angus &
Schuler Red Composite Bulls*

All Bulls evaluated for Fertility, Docility & Foot Structure

Get the Bull Right Every Time!



schulerredangus.com



Welcome to our 42nd Annual Production Sale!

The U.S. cattle inventory is at its lowest level since 1951. To say that another way, you would have to be at least 73 years old to have been alive the last time we had this few of cattle in the US! Cow numbers are not likely to rebound quickly, as producers have been reluctant to keep replacements with the higher calf market, there is persistent drought in parts of the country, and a large number of cows are still being sent to market. The economic future of the cow-calf sector looks bright for those producers with inventory. Cattle prices will continue

to set record highs over the next two years, especially when rain returns to key grazing areas and the packing plants under construction come on-line. We are going to need more cattle to supply the demand for beef here and abroad which presents a unique opportunity to improve the quality of the cowherd and our final product.

With the 2024 beef replacement heifer inventory down 11.4% from two years ago, replacement quality females may be worth as much if not more than their steer counterparts for the next couple years. At Schuler Red Angus, it is our business to get the cow right first. While we have a data driven breeding program that emphasizes economically relative traits, our system of culling non-conformers and giving preference to replacements born early in the calving season ensures that the necessary traits of fertility, function, and docility are bred into every bull we sell. In addition to 50 years of selection for superior cowherd traits, we have selected and tested for carcass traits for 33 years including ten years of birth to harvest data from a 1700-head progeny test herd in Kansas. As you make your bull decisions this spring, keep in mind that the calf crop sired this spring may be the most valuable in history. Competition for quality genetics will not only come from the feeders and packers, but also from the cow/calf sector who will need the most productive heifers to restock.

Thanks for the opportunity to earn your business. Please test your bulls this spring and make sure they are ready to go to work. If we can help you with your bull buying needs or have any questions about our program, please do not hesitate to contact us.

From all of us at Schuler Red Angus,

Butch, Susau, Stephaunie, David and Christy





42nd Annual Production Sale

Thursday, March 28, 2024 • at the ranch • Bridgeport, Nebraska

129 Red Angus Bulls & 38 Schuler Red Composite Bulls

- The top 167 bulls from over 800 registered cows
- Every bull registered with the Red Angus Association of America
- Performance Tested at the Ranch in large, equal-opportunity contemporary groups
- Complete Breeding Soundness Evaluation
- Carcass EPDs backed by Ultrasound and Harvest data
- Free Delivery in Nebraska and surrounding states
- \$100 discount on each bull picked up on sale day!

Volume Discounts

Buy 5-9 bulls and receive a 3% discount. Buy 10 bulls or more and receive a 6% discount.

Schedule:

Wednesday, March 27th

All Day - View Sale Bulls

5:30 pm - Chili and Cinnamon Rolls at the Ranch

Thursday, March 28^h

10:00 am - Bulls penned for viewing

11:00 am - Lunch by BurgerWerx

1:00 pm - **42nd Annual Schuler Production Sale**

- Bulls Sell in Catalog Order -

6:00 pm - Join us for dinner

Accommodations:

Cobblestone Inn - Bridgeport - 308/262-7900

Contact Info:

Auctioneer.....Lex Madden 307/532-1580
 Tri-State Livestock News.....Scott Dirk 605/380-6024
 Wyoming Livestock Roundup.....Curt Cox 307/630-4604
 Red Angus Association.....Cory Peters 805/861-0996
 Alliance Animal Clinic.....Calvin Tolsted, DVM 308/762-4140
 Buyer Representative.....Steve Flower 308/631-0366
 Seedstock Consultant.....Greg Comstock 804/647-0127

Schuler Contacts:

Office & Sale Day.....308/262-0306
 Butch's mobile.....308/279-0592
 email.....info1@schulerredangus.com
 website.....www.schulerredangus.com

Bull Delivery:

- We deliver bull purchases **FREE** to central locations in Nebraska and surrounding states.
- Often we can meet your trailer along the route which facilitates getting bulls delivered in a timely manner for both of us.
- A credit of \$100 per bull will be given on each bull taken home sale day.
- Deliveries begin immediately after the sale. If you prefer not to take delivery as scheduled, we will care for your bull purchases at our risk for \$4.00/hd/day to cover feed costs. The cost begins on April 10th and continues through the date your bulls are picked up.
- Please advise the sale clerks of an approximate date for your bulls to be picked up and the feed costs will be included in your invoice.



Sale Catalog Data:

Sale Lot # **1**

Registered Name **SCHULER CORNERSTONE-3387**

Birth Date, Category & percent Red Angus 3/20/23 1A (100%)

ProS Index & Percentile Rank - Combined impact of HerdBuilder and GridMaster Indices

Calving Ease, Weight & Repro Traits EPDs and percentile ranks

Docility Score Scored 1-5
1's & 2's are very easy to handle

Actual Birth Weight

Weaning (WW), Average Daily Gain (ADG) & Yearling (YW) ratios

Ultrasound %IMF and REA ratios

Scrotal Circumference (SC) adjusted to 365 days

Frame Size

Carcass EPDs and Percentile Ranks
MARB = USDA Marbling Score
YG = USDA Yield Grade
REA = Ribeye Area

GridMaster Index & Percentile Rank - predicts differences in profitability realized during the post-weaning phase (Feedlot and carcass)

dam's CIV (Calving Interval Value) identifies differences in value to the cow herd created by a bull's dam's calving interval, and when in the calving season her calves have been born. Note: only cows 3 and older can have a CIV, because it requires at least two calves to generate a calving interval. Review the full CIV explanation on page 39.

Herd Prefix: ID Registration #

WEDEL CORNERSTONE 0224H
WFL FRANKLY F8193

SOR MARLEE AMPLIFY 8149F
SOR MARLEE BRN CMT 9206W

act. BW 78

WW ratio 112

ADG ratio 96

YW ratio 104

IMF ratio 110

REA ratio 103

adj. SC 38.5

Frame Mod

ProS: 128 / 6% **HerdBuilder: 46 / 61%** **GridMaster: 82 / 1%**

CED	BW	WW	ADG	YW	MLK	HPG	CEM	STY	MRB	YG	REA
16	-3.8	79	.33	132	33	12	10	13	.83	-.06	.41
13%	17%	4%	3%	8%	5%	42%	9%	74%	3%	5%	8%

Docility: 1 **AoD: 5** **dMPPA: 105** **dam's CIV: \$9.20**

HerdBuilder Index & Percentile Rank - predicts differences in profitability realized during the cow/calf phase

Age of Dam (AoD) & dam's MPPA (Most Probable Producing Ability)

About the Catalog and Performance Data...

- Red Angus and Schuler Reds share a common base and their EPDs for performance and carcass traits can be directly compared.
- Breed rank percentages are printed next to each EPD so you may quickly evaluate each bull's predicted progeny performance relative to other non-parent Red Angus. Breed ranks are only comparable to other purebreds or to other composites and should not be used to compare across breed types.
- Calving Ease Direct (CED), Calving Ease Maternal (CEM), Heifer Pregnancy Rate (HPG) and Stayability (STAY) are presented as percent probabilities. Thus, a bull with an HPG EPD of 15 would be expected to have 5% greater positive observations (Pregnant daughters bred to calve as 2-year-olds) than a bull with a HPG EPD of 10.
- The Red Angus Association of America updates EPDs on a weekly basis. The EPDs in this sale catalog were generated on 3/1/2022. The most up-to-date EPDs are available on-line at <https://redangus.org/data-search-tools/>.
- **Go to schulerredangus.com to download a sortable spreadsheet with complete performance data and footscores.**



*Schuler Bulls
have been serving
Ranchers for nearly
50 years*

About the Sale...

To facilitate your evaluation and selection, the bulls will be penned next to the sale facility and sold in catalog order. A video of each bull will be displayed during the sale and no bulls will be run through a sale ring.

Bull Videos:

A video of each bull is available for viewing prior to the sale on our website at schulerredangus.com. The bulls were videoed Feb. 29 - Mar. 1, 2024 in an open pen along a four-wire fence eschewing from the typical background of windbreak or hay stacks commonly used in bull videos. We also prefer not to use straw in the video pen or in the viewing pens sale day so you that you may evaluate their movement and foot structure unencumbered.

Virtual bidding options if you cannot attend the sale:

Bid On-line: Since 2014 our sale has been broadcast over the internet using DV Auction. They provide a video catalog where bulls can be viewed prior to the sale as well as a bidding console where buyers can bid in real-time using their computers or mobile devices. Many customers have relied on DV auction when they couldn't be with us on sale day with a high level of satisfaction. We highly recommend you get approved for bidding at www.dvauction.com prior to sale day if possible. The process is user friendly and DV auction provides several bidding tutorials on their website. If you have any questions please do not hesitate to contact us.

DVAuction
Broadcasting Real-Time Auctions

Visit www.DVAuction.com
and Register Today!

For General Questions Please Contact Our Office:
(402) 316-5460 or support@dvauction.com

Conference call bidding:

Schuler Red Angus Bull Sale is inviting you to join their FreeConferenceCall Meeting Room. Join the meeting using one of these easy options:

- 1) Call our office (308) 262-0306 any time prior to the sale for a buyer's number.
- 2) On sale day call (562) 766-7545 to join a conference call where you may bid during the sale with one of our representatives.

Sight Unseen Bull Orders: Let Butch or Greg help you personally with your bull order.

1. Contact Butch at 308/279-0592, (cell) or email butch@schulerredangus.com.
2. Contact Greg at 804/647-0127, (cell) or email greg@groopllc.com
3. Butch or Greg will help you select bulls that meet your specifications.
4. You can then bid using one of the above options or let Butch or Greg handle your order during the sale. We buy bulls annually for several ranching operations and handle all bids with discretion.
5. **Satisfaction guaranteed.**

Looking Back...

The History of Schuler-Olsen Ranches, Inc. and Schuler Red Angus



2024
Schuler Red Angus - 42nd Annual Production Sale
March 28, 2024 - Bridgeport Nebraska
167 Red Angus and Schuler Red Composite Bulls

2023
Red Angus Association of America is currently one of the top three registrars of seedstock cattle in the United States.

2023
Stephanie participates in the LEAD 40 International Study/Travel Seminar to Costa Rica, Colombia, and Panama.

2022
Butch has served 21 consecutive years on the Red Angus Association's Strategic Planning Committee, and over a decade on the Breed Improvement.

2021
A fire started by lightning on August 5 consumes over 7,000 acres of heavily timbered pasture in Hackberry and Chalk Creek. Sixty-five fire departments from Nebraska, Colorado and Wyoming responded with aerial support from the Nebraska National Guard. The fire was contained after a 16-mile CAT line was dozed around the perimeter of the burning hills and backfired. No cattle were lost in the fire, but over 2,500 acres of pasture and 10 miles of fence are lost on the Schuler Ranch.

2019
The Bomb Cyclone hits the Schuler Ranch in March during calving season. This is one of the worst blizzards in history. Despite the record snowfall and wind, calf losses were kept to a minimum with over 40 head of calves born outside during the 2-day blizzard.

2017
David interns with the U.S. Grains Council at its international headquarters in Washington, D.C.

2017
Butch presents the first "Darrell and Mary Lou Schuler Memorial Award" at the 2017 Red Angus convention to Steve and Shelly Newberry of Livingston, MT. The award is instituted by the Red Angus Association of America to recognize members who have made an impact and undeniable difference to the betterment of Red Angus.



2014
Schuler Red Angus is recognized as the Beef Improvement Federation's "Seedstock Producer of the Year" for their dedication in improving the beef industry.

2022

David and Christy unite in marriage at Redington. The stock trailer used to deliver bulls is used to transport the wedding party from the church to the reception at Prairie Winds Community Center in Bridgeport.

2022

Butch is honored with membership in the Nebraska Hall of Agricultural Achievement.

2020

Schuler's working stock dog, Josie, is the runner-up Farm Bureau Farm Dog of the Year. She is recognized with \$1,000 and a silver dish. She is the only Schuler to receive money as an award.



2017

Butch and Susan are humbled to receive the "John V. Robbins Distinguished Service Award" for their contributions for the betterment of services provided by the Red Angus Association of America.

2017

Darrell is honored posthumously by the Red Angus Association of America with the "Melvin Leland Innovative Leadership Award" for his positive impact on the Association.

2011-2016

Participated in the National Beef Cattle Evaluation Consortium project to improve beef cattle efficiency through genotyping and development of an across-breed genomic selection program.

2014

After 23 years of carcass data collection, Schuler Red Angus joins with the Mehlhoff family in Montana and Blew Partnership in Kansas to develop a structured progeny test for carcass data collection. Unlike other carcass collection efforts, the Blew herd has full pedigree information incorporated into the test. Today, this is the largest structured data collection project in the Red Angus breed with approximately 1700 cows bred A.I. annually and reproductive observations collected in addition to weight traits, feedlot gain and carcass data.

- Continued on Pages 38-39 -

Born of the Bond

*Generations #1-3 are rooting for you.
Generations #5-7 are counting on you.*

You're generation #4.

See how one family is dealing with the challenges of transitioning the ranch.
Catch the latest episode of the BORN OF THE BOND web series.

**BORN
OF THE
BOND.COM**

zoetis

All trademarks are the property of Zoetis Services LLC or a related company or a licensor unless otherwise noted.
© 2024 Zoetis Services LLC. All rights reserved. GCA-0800

SCHULER RED ANGUS



Lot 1

SCHULER PROFESSIONAL-3387

Professional is the lead-off bull for our 42nd annual sale and comes with a huge spread from best 13% CED to heaviest 3% pay-weight. He is the right choice for those who rely on profitable calf crops, yet long for sustainable, productive, and problem-free cow herds. We used Cornerstone heavily because he is the Genuine son that improves Feed Efficiency and Yield Grade while adding Ribeye Area. As advertised, this Cornerstone son delivers single digit ranks for Marbling, Yield Grade and REA.

Most importantly, the cows behind this young herd sire demonstrate that fertility and reliability are built into his genome. His dam maintains a 368-day calving interval with progeny ratios of 106 weaning, 108 yearling, 110 IMF and 101 REA. His maternal grandam maintains a 370-day calving interval with progeny ratios of 107 weaning, 108 yearling and 117 IMF. Note that Professional's pedigree combines the breed's two most influential proven quality grade sires, 5L Genuine 1603-195C and Brown Commitment S7206. Their average EPD for Marbling is 1.21! To put that in perspective, IF you could find semen on either of these two patriarchs and then mate to a cow that is Red Angus breed average for Marbling, the parental average of her calf would be in the top 10% Marbling in a single generation. That would be an ultrasound scan that would likely best his contemporaries and drive the Marbling EPD even higher!



SCHULER PROFESSIONAL-3387

3/20/23 SOR : 3387
1A (100%) #4842270

5L GENUINE 1603-195C

WEDEL CORNERSTONE 0224H

WFL FRANKLY F8193

SCHULER AMPLIFY 6206D

SOR MARLEE AMPLIFY 8149F

SOR MARLEE BRN CMT 9206W

act. BW	78
WW ratio	112
ADG ratio	96
YW ratio	104
IMF ratio	110
REA ratio	103
adj. SC	38.5
Frame	Mod

ProS: 128 / 6%				HerdBuilder: 46 / 61%				GridMaster: 82 / 1%			
CED	BW	WW	ADG	YW	MLK	HPG	CEM	STY	MRB	YG	REA
16	-3.8	79	.33	132	33	12	10	13	.83	-.06	.41
13%	17%	4%	3%	3%	5%	42%	9%	74%	3%	5%	8%
Docility: 1		AoD: 5		dMPPA: 105		dam's CIV: \$9.20					



SCHULER FULFILLMENT-3358

3/15/23 SOR : 3358
1A (100%) #4842212

5L GENUINE 1603-195C

WEDEL CORNERSTONE 0224H

WFL FRANKLY F8193

SCHULER ENDURANCE 2101Z

SOR RUFEX ENDURANCE 4203B

SOR RUFEX EXCALIBER 2626Z

act. BW	75
WW ratio	102
ADG ratio	104
YW ratio	103
IMF ratio	124
REA ratio	94
adj. SC	34.8
Frame	Mod

ProS: 114 / 16%				HerdBuilder: 53 / 47%				GridMaster: 61 / 11%			
CED	BW	WW	ADG	YW	MLK	HPG	CEM	STY	MRB	YG	REA
18	-6.0	65	.25	105	32	13	11	14	.69	-.03	.30
3%	2%	35%	34%	34%	8%	21%	2%	61%	9%	11%	20%
Docility: 1		AoD: 9		dMPPA: 99		dam's CIV: \$39.68					



Lot 2

SCHULER FULFILLMENT-3358

Here's a calving ease specialist that is loaded with cow herd improving genetics. One of our core policies at Schuler Red Angus is to "Get the Cow Right First" and we believe that Schuler Fulfillment-3358 is well designed to carry out that plan. Fertility and longevity work together to reduce replacement needs, lower cow herd depreciation cost and ultimately harvest more pounds of beef per acre. Fulfillment stacks such cows on both sides of his pedigree. Endurance sired dams, such as Fulfillment's mother, have a well-documented record of putting bulls in the first pages of this sale catalog for years. She has weaned eight calves as a 9-year-old and maintained a 368-day calving interval in the process. Cornerstone's maternal granddam, has had 10 natural calves with average progeny ratios of: 110 weaning, 108 yearling, 107 IMF and 108 REA.

Lot 3

SCHULER BULLET PROOF-3332

If you need one bull that can improve Quality Grade, Yield Grade and Pay-weight simultaneously, be sure to study Lot 3. Bullet Proof never missed a beat posting strong performance and ultrasound ratios each time he came through the chute. His maternal grandsire, Schuler Top Hand D911 produced 66% PRIME carcasses when tested through our structured progeny test. His highly fertile dam produced her first two calves with first service A.I. conceptions. Her high CIV confirms her superior fertility.



SCHULER BULLET PROOF-3332

3/8/23 SOR : 3332
1B (99.9%) #4842160

5L GENUINE 1603-195C

WEDEL CORNERSTONE 0224H

WFL FRANKLY F8193

SCHULER TOP HAND D911

SOR QUEEN TOP HAND 0119

SOR QUEEN JDG6629 1561Y

act. BW	89
WW ratio	106
ADG ratio	106
YW ratio	107
IMF ratio	104
REA ratio	105
adj. SC	34.1
Frame	Mod

ProS: 94 / 43%				HerdBuilder: 37 / 77%				GridMaster: 57 / 16%			
CED	BW	WW	ADG	YW	MLK	HPG	CEM	STY	MRB	YG	REA
13	-1.1	77	.30	125	29	14	6	13	.65	-.09	.32
45%	65%	6%	8%	6%	21%	9%	64%	76%	12%	3%	16%
Docility: 1		AoD: 3		dMPPA: 103		dam's CIV: \$47.58					



SCHULER SUCCESSION-3334

3/9/23 SOR : 3334
1A (100%) #4842164

5L BOURNE 117-48A

5L TRANSPORTER 4916-25F

5L ROSE 4104-4916

SCHULER OMYGOODNESS 2121Z

SOR GARNET OMGDNSS 4232B

SOR GARNET DYNATREND 0420X

act. BW	82
WW ratio	112
ADG ratio	105
YW ratio	109
IMF ratio	116
REA ratio	104
adj. SC	36.2
Frame	Mod

ProS: 123 / 9%				HerdBuilder: 69 / 18%				GridMaster: 54 / 20%			
CED	BW	WW	ADG	YW	MLK	HPG	CEM	STY	MRB	YG	REA
16	-3.0	80	.31	130	28	14	9	17	.52	.08	.33
11%	29%	3%	5%	3%	35%	14%	20%	22%	29%	59%	15%
Docility: 1		AoD: 9		dMPPA: 109		dam's CIV: \$28.05					

Lot 4

SCHULER SUCCESSION-3334

The Transporter sire group is the largest in terms of numbers of sons in the sale. That is for good reason as his cattle are as trouble-free as they come and we like to perpetuate traits that make it easier and more profitable to be a rancher. The Transporters calve easy, consistently grade well, and always outweigh my visual appraisal. I have often remarked how I would not mind a whole herd of Transporter daughters. The progeny consistently have good feet and legs; the daughters are moderate framed and easy fleshing with excellent udder suspension and small teats. The sons are moderate, deep, thick and good as exemplified by Lot 4.

Succession comes with a big top and is wide through the stifle when viewed from the rear. His highly fertile dam had her 8th calf on her 9th birthday and earned average progeny ratios of 111 weaning and 108 yearling.



SCHULER RED ANGUS



Lot 5 - SCHULER TRANSPORTER-3309



SCHULER TRANSPORTER-3309

2/20/23 SOR : 3309
1A (100%) #4842122

5L BOURNE 117-48A

5L TRANSPORTER 4916-25F

5L ROSE 4104-4916

5L THE REAL DEAL 1603-393G

SOR QUEEN THE REAL DEAL-1324

SOR QUEEN PROFITMAKER-9508

act. BW	80
WW ratio	114
ADG ratio	108
YW ratio	111
IMF ratio	86
REA ratio	102
adj. SC	36.1
Frame	Mod

ProS: 120 / 10%					HerdBuilder: 62 / 28%				GridMaster: 58 / 14%		
CED	BW	WW	ADG	YW	MLK	HPG	CEM	STY	MRB	YG	REA
15	-1.6	81	.30	129	26	13	7	15	.74	.11	.17
26%	56%	3%	9%	4%	49%	27%	47%	42%	6%	73%	43%
Docility: 1		AoD: 2		dMPPA: 106			dam's CIV: 2-Yr-Old				

The Transporter progeny have earned a reputation for excellent foot structure, fleshing ability, and Marbling. Lot 5 is no exception. His maternal grandsire, 393G is a maternal brother to marbling legend, 5L Genuine 1603-195C. His young dam found her way to the front end of the herd after weaning a 114 WW ratio son on her first attempt.



Lot 6 - SCHULER GRADUATE-L014



SCHULER GRADUATE-L014

2/24/23 SOR : L014
1B (99.7%) #4842746

5L BOURNE 117-48A

5L TRANSPORTER 4916-25F

5L ROSE 4104-4916

WFL RETAIL CUT F8107

SOR BRASKA RETAIL CUT-J621

SOR BRASKA CONFIDENCE-G397

act. BW	64
WW ratio	103
ADG ratio	104
YW ratio	103
IMF ratio	113
REA ratio	117
adj. SC	32.2
Frame	Mod

ProS: 96 / 40%					HerdBuilder: 50 / 53%				GridMaster: 46 / 33%		
CED	BW	WW	ADG	YW	MLK	HPG	CEM	STY	MRB	YG	REA
17	-4.3	75	.27	119	26	13	8	14	.69	.11	.07
6%	12%	8%	20%	11%	48%	18%	40%	64%	9%	74%	65%
Docility: 2		AoD: 2		dMPPA: 101			dam's CIV: 2-Yr-Old				

Lot 6 is a heifer bull deluxe, but he is no one-trick pony. This Transporter son comes with superior predictions for growth, gain and carcass value to make him an excellent candidate to graduate to the cow herd once he grows too large for heifers.



Lot 7 - SCHULER GRILL MASTER-3300



SCHULER GRILL MASTER-3300

3/23/23 SOR : 3300
1A (100%) #4842104

BIEBER CL ENERGIZE F121

BIEBER JUMPSTART J137

BIEBER GALLEE 390G

3SCC DOMAIN A163

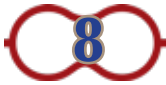
SOR SHASTALADY DOMAIN 8160F

SOR SHSTA LDY ENDRNCE 5348C

act. BW	89
WW ratio	97
ADG ratio	113
YW ratio	105
IMF ratio	107
REA ratio	101
adj. SC	33.1
Frame	Mod

ProS: 106 / 25%					HerdBuilder: 61 / 32%				GridMaster: 45 / 35%		
CED	BW	WW	ADG	YW	MLK	HPG	CEM	STY	MRB	YG	REA
15	-2.1	78	.33	130	29	16	7	17	.48	.09	.21
25%	45%	5%	3%	3%	20%	4%	57%	23%	36%	65%	34%
Docility: 1		AoD: 5		dMPPA: 104			dam's CIV: \$46.62				

2024 will be our first year of selling sons of Jumpstart, the high selling Red Angus bull from 2022. Grill Master is our first, and he is representative of the pay-weight and muscling that comes as standard equipment on this sire group.



SCHULER ENERGY-L047

3/14/23 SOR: L047
1B (99.9%) #4842812

BIEBER CL ATOMIC C218

BIEBER CL ENERGIZE F121

BIEBER CL ADELLE 575D

WFL PROFITMAKER E7030

SOR BRASKA PROFITMAKER-G337

SOR BRASKA BOURNE E218

act. BW	62
WW ratio	103
ADG ratio	105
YW ratio	104
IMF ratio	109
REA ratio	110
adj. SC	35.3
Frame	Mod-

ProS: 123 / 9%					HerdBuilder: 71 / 16%				GridMaster: 52 / 23%		
CED	BW	WW	ADG	YW	MLK	HPG	CEM	STY	MRB	YG	REA
19	-7.0	67	.26	108	32	16	9	14	.56	.04	.23
1%	1%	29%	28%	28%	6%	3%	11%	64%	22%	34%	30%
Docility: 1		AoD: 4		dMPPA: 100		dam's CIV: \$47.80					

Schuler Energy-L047 is another elite calving ease bull that handily bested the average of his contemporaries despite his modest 62 lb. birth weight. His 4-year-old ProfitMaker dam has three consecutive first service A.I. pregnancies. Notice her high CIV predicting her ability to conceive early every year.



Lot 8 - SCHULER ENERGY-L047



SCHULER PROTOTYPE-L043

3/13/23 SOR: L043
1B (99.9%) #4842804

WFL MERLIN 018A

LSF SRR KING ARTHUR 0136H

LSF SRR RAINDANC A3335 D6211

SCHULER EDGE 5502C

SOR BRASKA EDGE E290

SOR BRASKA NVUS B683

act. BW	73
WW ratio	101
ADG ratio	108
YW ratio	105
IMF ratio	100
REA ratio	95
adj. SC	31.3
Frame	Mod+

ProS: 90 / 49%					HerdBuilder: 55 / 43%				GridMaster: 36 / 55%		
CED	BW	WW	ADG	YW	MLK	HPG	CEM	STY	MRB	YG	REA
15	-4.0	82	.30	129	26	13	7	15	.46	.00	.25
23%	15%	2%	10%	4%	50%	22%	60%	49%	40%	17%	27%
Docility: 1		AoD: 6		dMPPA: 95		dam's CIV: \$51.17					

Do not put this stud down by the highway unless you want to stop traffic. The dam of this phenotypic young sire is a highly fertile female who gave birth to her 5th calf ten days prior to her 6th birthday and maintains a 365 day-calving interval. Hence her excellent CIV (Calving Interval Value).



Lot 9 - SCHULER PROTOTYPE-L043



SCHULER KING ARTHUR-3376

3/19/23 SOR: 3376
1A (100%) #4842248

WFL MERLIN 018A

LSF SRR KING ARTHUR 0136H

LSF SRR RAINDANC A3335 D6211

BROWN BLW INTREPID C5963

SOR GARNET INTREPID 8186F

SOR GRNT STRATEGY 3955A

act. BW	78
WW ratio	107
ADG ratio	89
YW ratio	99
IMF ratio	129
REA ratio	106
adj. SC	33.0
Frame	Mod

ProS: 84 / 59%					HerdBuilder: 46 / 60%				GridMaster: 38 / 51%		
CED	BW	WW	ADG	YW	MLK	HPG	CEM	STY	MRB	YG	REA
14	-3.2	86	.32	137	31	12	7	13	.44	.02	.24
39%	26%	1%	5%	2%	9%	31%	42%	72%	45%	26%	29%
Docility: 1		AoD: 5		dMPPA: 102		dam's CIV: \$13.79					

This is our first set of King Arthur sons, and our experience is that his reputation for superior foot structure is well-deserved. Lots 9 and 10 are both very sound footed and both are long as a well rope.



Lot 10 - SCHULER KING ARTHUR-3376

SCHULER RED ANGUS



Lot 11 - SCHULER MATCHMAKER-L093



Lot 12 - SCHULER CORNERSTONE-3433



Lot 13 - SCHULER CORNERSTONE-L048

11

SCHULER MATCHMAKER-L093

3/15/23 SOR : L093
1B (99.8%) #4842904

WFL PROFITMAKER E7030

SCHULER MATCHMAKER 1974

SOR SHASTALADY HORIZON 5381C

SCHULER DISCIPLINE 8506F

SOR BRASKA DISCIPLINE H787

SOR BRASKA GOOD TIME D542

act. BW	
WW ratio	118
ADG ratio	114
YW ratio	116
IMF ratio	113
REA ratio	97
adj. SC	31.8
Frame	Mod

ProS: 110 / 20%					HerdBuilder: 77 / 9%				GridMaster: 34 / 61%			
CED	BW	WW	ADG	YW	MLK	HPG	CEM	STY	MRB	YG	REA	
12	-1.4	81	.30	129	37	16	7	17	.50	.07	.09	
67%	60%	2%	9%	4%	1%	4%	60%	20%	32%	49%	62%	
Docility: 1			AoD: 3		dMPPA: 109			dam's CIV: \$26.45				

This bull is the spittin' image of his sire, Schuler Matchmaker 1974 who was the high selling bull in our 2022 sale, going to Sandy Willow Red Angus in South Dakota. Lot 11 will be the first son to sell at Schuler Red Angus and is loaded with performance. We take birthweights on nearly 1,000 head of calves each year, but occasionally we miss one. His dam weaned two calves with an average weaning ratio of 116.

12

SCHULER CORNERSTONE-3433

3/27/23 SOR : 3433
1A (100%) #4842362

5L GENUINE 1603-195C

WEDEL CORNERSTONE 0224H

WFL FRANKLY F8193

5L TOP FLIGHT 3010-491A

SOR ANKIE TOP FLGHT 7811E

SOR ANKIE ENDURANCE 5313C

act. BW	87
WW ratio	107
ADG ratio	108
YW ratio	108
IMF ratio	96
REA ratio	112
adj. SC	36.2
Frame	Mod

ProS: 100 / 33%					HerdBuilder: 55 / 42%				GridMaster: 45 / 35%			
CED	BW	WW	ADG	YW	MLK	HPG	CEM	STY	MRB	YG	REA	
14	-1.3	77	.29	123	34	15	9	14	.53	-.04	.30	
39%	61%	6%	14%	8%	2%	7%	19%	64%	27%	8%	20%	
Docility: 1			AoD: 6		dMPPA: 108			dam's CIV: (\$20.06)				

If you like herd bulls from dams who have passed the test of time, take a long look at this powerful Cornerstone son. His dam has a 365-day calving interval and an average progeny weaning ratio of 111.

13

SCHULER CORNERSTONE-L048

3/14/23 SOR : L048
1B (99.9%) #4842814

5L GENUINE 1603-195C

WEDEL CORNERSTONE 0224H

WFL FRANKLY F8193

5L DEFENDER 3290-57B

SOR BRASKA DEF-57B D525

SOR BRASKA OMGDNSS B664

act. BW	79
WW ratio	105
ADG ratio	107
YW ratio	106
IMF ratio	102
REA ratio	98
adj. SC	35.8
Frame	Mod

ProS: 72 / 78%					HerdBuilder: 21 / 94%				GridMaster: 51 / 25%			
CED	BW	WW	ADG	YW	MLK	HPG	CEM	STY	MRB	YG	REA	
16	-3.1	73	.27	116	32	12	10	10	.66	-.10	.42	
15%	26%	12%	24%	15%	7%	43%	8%	91%	12%	3%	7%	
Docility: 1			AoD: 7		dMPPA: 105			dam's CIV: \$44.68				

This deep ribbed, wide-based Cornerstone son is another "dual purpose" bull that excels in calving ease but does so without giving up pay-weight or carcass merit. His dam does nothing wrong and predictably gave birth to her 6th calf four days prior to her 7th birthday.

14

SCHULER TRANSPORTER-3333

3/9/23 SOR : 3333
1B (99.9%) #4842162

5L BOURNE 117-48A

5L TRANSPORTER 4916-25F

5L ROSE 4104-4916

BROWN ORACLE B112

SOR GARNET ORACLE 8205F

SOR GARNET REBEL 3906A

act. BW	75
WW ratio	106
ADG ratio	97
YW ratio	102
IMF ratio	144
REA ratio	96
adj. SC	34.2
Frame	Mod

ProS: 115 / 15%				HerdBuilder: 58 / 35%				GridMaster: 57 / 16%			
CED	BW	WW	ADG	YW	MLK	HPG	CEM	STY	MRB	YG	REA
17	-4.9	76	.28	120	26	13	8	16	.71	.10	.16
6%	7%	7%	18%	10%	51%	17%	36%	39%	8%	67%	45%
Docility: 2		AoD: 5		dMPPA: 105		dam's CIV: \$43.21					

Stacking three high marbling sires in the pedigree like Transporter, Oracle and Rebel might not be fair to the other bulls, but it resulted in an overwhelming IMF ratio for this stud driving his Marbling EPD to the top 8% of the breed. Never mind you can use him safely on heifers and have an YW EPD in the top 10%. His Oracle dam maintains a 371-day calving interval with an average progeny weaning ratio of 107.

15

SCHULER TRANSPORTER-3429

3/28/23 SOR : 3429
1B (99.9%) #4842354

5L BOURNE 117-48A

5L TRANSPORTER 4916-25F

5L ROSE 4104-4916

BIEBER REAL MCCOY Y124

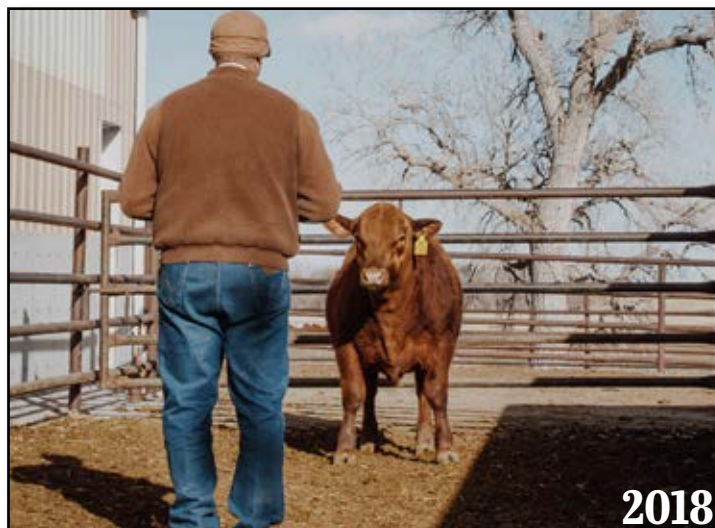
SOR MINRVNO R MCCOY 5377C

SOR MNRVNO DYNTRND 1605Y

act. BW	86
WW ratio	101
ADG ratio	106
YW ratio	104
IMF ratio	105
REA ratio	98
adj. SC	35.3
Frame	Mod

ProS: 113 / 17%				HerdBuilder: 73 / 13%				GridMaster: 40 / 46%			
CED	BW	WW	ADG	YW	MLK	HPG	CEM	STY	MRB	YG	REA
13	-1.5	73	.24	111	24	18	7	16	.55	.11	.04
54%	58%	12%	43%	22%	64%	1%	49%	37%	24%	75%	71%
Docility: 2		AoD: 8		dMPPA: 101		dam's CIV: \$7.24					

Lot 15's dam easily passed her 6-year Stayability requirement with flying colors by maintaining a 367-day calving interval.



2018

We have culled on feet and disposition in the cowherd for as many years as we have raised seedstock. In 2018 we began scoring feet and docility on the sale bulls using an objective third party. The bull's feet are scored on concrete and they are separated from their herdmates to score docility.



Lot 15 - SCHULER TRANSPORTER-3429

16

SCHULER TRANSPORTER-L076

3/19/23 SOR : L076
1B (99.7%) #4842870

5L BOURNE 117-48A

5L TRANSPORTER 4916-25F

5L ROSE 4104-4916

SCHULER DISCIPLINE 8506F

SOR BRASKA DISCIPLINE H798

SOR BRASKA REBEL D590

act. BW	94
WW ratio	112
ADG ratio	110
YW ratio	111
IMF ratio	104
REA ratio	106
adj. SC	39.0
Frame	Mod

ProS: 134 / 4%				HerdBuilder: 77 / 10%				GridMaster: 58 / 15%			
CED	BW	WW	ADG	YW	MLK	HPG	CEM	STY	MRB	YG	REA
12	-7	80	.31	130	28	16	5	18	.64	.12	.17
64%	73%	3%	6%	4%	32%	4%	83%	12%	13%	76%	43%
Docility: 3		AoD: 3		dMPPA: 107		dam's CIV: (\$2.70)					

Schuler Transporter-L076 is an excellent choice for wet 2-year-olds or mature cows that need faster gains, heavier payweights and higher quality grade premiums. His dam maintains a 363-day calving interval and a 107 MPPA;



5L TRANSPORTER 4916-25F
Sire of Lots 14, 15, 16 and many other lots in the sale.

SCHULER RED ANGUS



Lot 17 - SCHULER TRANSPORTER-3420



Lot 18 - SCHULER TRANSPORTER-3353

19 **SCHULER KING ARTHUR-L101**
 3/17/23 SOR : L101
 1B (99.9%) #4842920

act. BW	90
WW ratio	112
ADG ratio	115
YW ratio	114
IMF ratio	98
REA ratio	109
adj. SC	35.4
Frame	Mod+

WFL MERLIN 018A
LSF SRR KING ARTHUR 0136H
 LSF SRR RAINDANC A3335 D6211
 SCHULER AMPLIFY 6206D
SOR BRASKA AMPLIFY F966
 SOR BRASKA PACKER Y754

ProS: 96 / 40%				HerdBuilder: 50 / 53%				GridMaster: 46 / 33%			
CED	BW	WW	ADG	YW	MLK	HPG	CEM	STY	MRB	YG	REA
12	-1.8	88	.32	140	32	13	7	13	.59	-.02	.33
66%	51%	1%	4%	1%	7%	21%	51%	71%	19%	14%	15%
Docility: 1		AoD: 5		dMPPA: 105		dam's CIV: \$47.32					

This top gaining King Arthur son may not have enough calving ease to be used on first-calf heifers but his offspring will pay significant dividends in the cowherd. His EPD profile indicates he will add pay-weight at weaning, improve rate of gain and hang heavier carcasses that excel for both quality and yield grade.

17 **SCHULER TRANSPORTER-3420**
 4/1/23 SOR : 3420
 1A (100%) #4842336

act. BW	83
WW ratio	101
ADG ratio	108
YW ratio	105
IMF ratio	82
REA ratio	99
adj. SC	38.4
Frame	Mod

5L BOURNE 117-48A
5L TRANSPORTER 4916-25F
 5L ROSE 4104-4916
 SCHULER OMYGOODNESS 4805B
SOR SHTLDY OMG-4805B 6736D
 SOR SHSTLDY SB 7719T

ProS: 124 / 8%				HerdBuilder: 76 / 11%				GridMaster: 48 / 29%			
CED	BW	WW	ADG	YW	MLK	HPG	CEM	STY	MRB	YG	REA
14	-2.6	72	.27	114	25	14	7	17	.61	.08	.04
39%	35%	14%	25%	17%	63%	14%	53%	24%	16%	59%	71%
Docility: 1		AoD: 7		dMPPA: 100		dam's CIV: (\$42.43)					

Uniformity is the quickest way to add value to your calf crop, and through the catalog you will find sets of half-brothers of similar phenotype and genotype. For example, Lot 17 is the fourth in a set of five half-brothers by Transporter that are all medium-framed and are predicted to improve pay-weight, quality grade and produce highly functional replacements.

18 **SCHULER TRANSPORTER-3353**
 3/14/23 SOR : 3353
 1B (99.9%) #4842202

act. BW	82
WW ratio	109
ADG ratio	118
YW ratio	114
IMF ratio	116
REA ratio	93
adj. SC	36.8
Frame	Mod

5L BOURNE 117-48A
5L TRANSPORTER 4916-25F
 5L ROSE 4104-4916
 SCHULER ENVIOUS 2156Z
SOR RUTH NVUS 4269B
 SOR RUTH NEBU P707 1554Y

ProS: 132 / 4%				HerdBuilder: 93 / 2%				GridMaster: 39 / 49%			
CED	BW	WW	ADG	YW	MLK	HPG	CEM	STY	MRB	YG	REA
15	-3.1	74	.26	116	25	19	6	19	.63	.14	.01
23%	26%	10%	27%	15%	56%	1%	72%	6%	14%	85%	77%
Docility: 3		AoD: 9		dMPPA: 104		dam's CIV: \$42.70					

If you have run second place on the previous four Transporter sons, do not worry, Lot 18 may be the best of the bunch. His 104 MPPA dam has a 367-day calving interval as a 9-yr-old and seven of her eight calves have been sired A.I.

20 **SCHULER JUMPSTART-3367**
 3/17/23 SOR : 3367
 1A (100%) #4842230

act. BW	73
WW ratio	100
ADG ratio	99
YW ratio	100
IMF ratio	103
REA ratio	97
adj. SC	35.9
Frame	Mod-

BIEBER CL ENERGIZE F121
BIEBER JUMPSTART J137
 BIEBER GALLEE 390G
 5L DEFENDER 560-30Z
SOR DUCHESS DEFENDER 8161F
 SOR DCHSS NEBU P707 1557Y

ProS: 79 / 69%				HerdBuilder: 40 / 73%				GridMaster: 39 / 48%			
CED	BW	WW	ADG	YW	MLK	HPG	CEM	STY	MRB	YG	REA
18	-5.3	74	.30	122	27	13	8	14	.49	.10	.07
3%	5%	10%	9%	8%	41%	19%	38%	61%	34%	67%	65%
Docility: 1		AoD: 5		dMPPA: 98		dam's CIV: \$7.41					

Lot 20 is the second son of the \$185,000 Jumpstart in our 42nd annual sale offering, and like his "old man" combines elite calving ease with single digit ranks for weaning, yearling and ADG.

21

SCHULER JUMPSTART-3397

3/23/23 SOR : 3397
1A (100%) #4842290

BIEBER CL ENERGIZE F121

BIEBER JUMPSTART J137

BIEBER GALLEE 390G

5L TOP FLIGHT 3010-491A

SOR FIREFLY TOP FLIGHT 6767D

SOR FIREFLY DYNATREND 0431X

act. BW	80
WW ratio	115
ADG ratio	99
YW ratio	107
IMF ratio	69
REA ratio	99
adj. SC	36.1
Frame	Mod+

ProS: 112 / 18%				HerdBuilder: 83 / 5%				GridMaster: 29 / 69%			
CED	BW	WW	ADG	YW	MLK	HPG	CEM	STY	MRB	YG	REA
17	-3.5	86	.32	137	30	18	10	16	.31	.06	.30
9%	21%	1%	5%	2%	16%	1%	7%	37%	76%	45%	20%
Docility: 1		AoD: 7		dMPPA: 105		dam's CIV: (\$64.73)					

Jumpstart captured the attention of the Red Angus community by combining sleep all night calving ease with best of breed growth. Lot 21 is the apple that did not fall far from the tree spreading the easiest calving 9% of the breed to the heaviest weaning 1%.



Lot 21 - SCHULER JUMPSTART-3397

22

SCHULER MATCHMAKER-L042

3/13/23 SOR : L042
1B (99.9%) #4842802

WFL PROFITMAKER E7030

SCHULER MATCHMAKER 1974

SOR SHASTALADY HORIZON 5381C

5L TOPGUN 560-65B

SOR BRASKA TOPGUN-G384

SOR BRASKA POSTMAN D560

act. BW	77
WW ratio	111
ADG ratio	101
YW ratio	106
IMF ratio	76
REA ratio	100
adj. SC	35.3
Frame	Mod+

ProS: 104 / 28%				HerdBuilder: 64 / 26%				GridMaster: 40 / 46%			
CED	BW	WW	ADG	YW	MLK	HPG	CEM	STY	MRB	YG	REA
13	-3.0	78	.28	124	32	17	6	14	.56	.00	.22
42%	29%	4%	15%	7%	8%	2%	76%	59%	22%	19%	32%
Docility: 1		AoD: 4		dMPPA: 104		dam's CIV: \$48.62					

Matchmaker appears to be stamping his sons with the same natural thickness and depth of rib that he demonstrated back in 2022 when he topped our sale. Lot 22 is especially thick with plenty of rib shape and excellent foot structure.



23

SCHULER MATCHMAKER-L018

3/3/23 SOR : L018
1B (99.9%) #4842754

WFL PROFITMAKER E7030

SCHULER MATCHMAKER 1974

SOR SHASTALADY HORIZON 5381C

SCHULER SUPREMACY-9803

SOR BRASKA SPRMCY-9803-J579

SOR BRASKA ORACLE F925

act. BW	64
WW ratio	98
ADG ratio	100
YW ratio	99
IMF ratio	111
REA ratio	108
adj. SC	33.5
Frame	Mod-

ProS: 88 / 53%				HerdBuilder: 65 / 23%				GridMaster: 23 / 81%			
CED	BW	WW	ADG	YW	MLK	HPG	CEM	STY	MRB	YG	REA
13	-2.0	76	.25	116	31	14	7	16	.44	.04	.13
54%	48%	7%	36%	16%	12%	10%	58%	33%	45%	37%	51%
Docility: 1		AoD: 2		dMPPA: 99		dam's CIV: 2-Yr-Old					

Lot 23 is clean fronted and long bodied. He packs superior weaning and yearling performance into a moderate frame.



Lot 23 - SCHULER MATCHMAKER-L018

SCHULER RED ANGUS

24

SCHULER GAIN N GRADE-3352

3/14/23 SOR : 3352
1B (99.4%) #4842200

SCHULER RANCH HAND F606

SCHULER GAIN N GRADE J876

SOR BRASKA DOMAIN F953

SCHULER REBEL 0029X

SOR LADY REBEL 8156F

SOR LADY NK8148 0475X

act. BW	83
WW ratio	111
ADG ratio	108
YW ratio	109
IMF ratio	120
REA ratio	90
adj. SC	36.8
Frame	Mod

ProS: 101 / 32%				HerdBuilder: 78 / 9%				GridMaster: 23 / 80%			
CED	BW	WW	ADG	YW	MLK	HPG	CEM	STY	MRB	YG	REA
15	-2.1	82	.31	131	30	13	6	18	.33	.15	.04
24%	45%	2%	7%	3%	17%	27%	64%	9%	72%	89%	71%
Docility: 1		AoD: 5		dMPPA: 103		dam's CIV: \$49.92					

Lot 24 starts a run of 3/4 brothers by Schuler Gain N Grade J876 who was Lot 1 in 2022. They were all raised by Rebel daughters with strong MPPAs and positive CIVs. What a great opportunity to turn out a set of uniform yearling bulls that raise the bar for cowherd and harvest traits.



25

SCHULER GAIN N GRADE-L102

3/17/23 SOR : L102
1B (98.9%) #4842922

SCHULER RANCH HAND F606

SCHULER GAIN N GRADE J876

SOR BRASKA DOMAIN F953

SCHULER REBEL 0029X

SOR BRASKA REBEL F986

SOR BRASKA NK U355

act. BW	84
WW ratio	102
ADG ratio	103
YW ratio	103
IMF ratio	110
REA ratio	106
adj. SC	35.9
Frame	Mod

ProS: 96 / 40%				HerdBuilder: 69 / 18%				GridMaster: 28 / 72%			
CED	BW	WW	ADG	YW	MLK	HPG	CEM	STY	MRB	YG	REA
13	-1.3	75	.30	123	30	11	6	18	.37	.10	.10
44%	61%	8%	9%	7%	18%	49%	78%	12%	63%	69%	58%
Docility: 1		AoD: 5		dMPPA: 103		dam's CIV: \$14.81					

The three-quarter brothers selling as Lots 24-26 scanned well and earned an average IMF ratio of 113. The sire of these three dams, Rebel, set semen sale records at Accelerated and Select. His reputation for delivering reliable calving ease, quick growth, and excellent daughters is undisputed.

26

SCHULER GAIN N GRADE-L053

3/15/23 SOR : L053
1B (98.7%) #4842824

SCHULER RANCH HAND F606

SCHULER GAIN N GRADE J876

SOR BRASKA DOMAIN F953

SCHULER REBEL 0029X

SOR BRASKA REBEL D531

A036

act. BW	76
WW ratio	105
ADG ratio	102
YW ratio	104
IMF ratio	110
REA ratio	90
adj. SC	36.8
Frame	Mod

ProS: 105 / 26%				HerdBuilder: 78 / 8%				GridMaster: 27 / 74%			
CED	BW	WW	ADG	YW	MLK	HPG	CEM	STY	MRB	YG	REA
16	-3.4	77	.30	125	32	12	8	19	.37	.19	.04
11%	23%	6%	8%	6%	7%	40%	36%	6%	63%	96%	71%
Docility: 1		AoD: 7		dMPPA: 103		dam's CIV: \$47.01					

The sire of Lots 24-26, Schuler Gain N Grade J876, led off our 2022 sale and was named to commemorate his calf crop leading 122 ADG and 135 IMF ratios.

27

SCHULER TRANSPORTER-3442

3/25/23 SOR : 3442
1B (99.9%) #4842380

5L BOURNE 117-48A

5L TRANSPORTER 4916-25F

5L ROSE 4104-4916

WFL PROFITMAKER E7030

SOR MNRVNO PROFITMAKER-9855

SOR MNRVNO PACKER 1548Y

act. BW	93
WW ratio	107
ADG ratio	101
YW ratio	105
IMF ratio	136
REA ratio	102
adj. SC	36.2
Frame	Mod

ProS: 123 / 9%				HerdBuilder: 70 / 16%				GridMaster: 52 / 23%			
CED	BW	WW	ADG	YW	MLK	HPG	CEM	STY	MRB	YG	REA
14	-2.5	77	.28	121	25	15	7	15	.62	.08	.18
38%	38%	6%	19%	9%	61%	5%	47%	42%	15%	55%	41%
Docility: 1		AoD: 4		dMPPA: 99		dam's CIV: \$19.95					

Lot 27 has that deep-ribbed, wide sprung shape that will pass on to his progeny. A herd of his daughters with similar capacity and fleshing ability would be a definite advantage when winter comes. He leads off a run of three similarly made Transporter half-brothers that sell between here and Lot 30.



Lot 27 - SCHULER TRANSPORTER-3442

28

SCHULER TRANSPORTER-L105

3/19/23 SOR : L105
1B (96.2%) #4842928

5L BOURNE 117-48A

5L TRANSPORTER 4916-25F

5L ROSE 4104-4916

SCHULER RED 71 AMPED D303

SOR BRASKA AMPED F941

SOR BRASKA SUD IMP Z414

act. BW	78
WW ratio	99
ADG ratio	107
YW ratio	103
IMF ratio	103
REA ratio	104
adj. SC	34.0
Frame	Mod-

ProS: 120 / 10%					HerdBuilder: 65 / 23%					GridMaster: 55 / 19%		
CED	BW	WW	ADG	YW	MLK	HPG	CEM	STY	MRB	YG	REA	
16	-4.0	69	.27	113	22	14	7	17	.70	.07	.08	
12%	15%	20%	21%	19%	84%	12%	58%	23%	9%	54%	63%	
Docility: 1					AoD: 5		dMPPA: 99			dam's CIV: \$3.85		

This Transporter son raised by an Amped daughter would make an excellent choice to breed heifers. The progeny will excel in fleshing ability and cold, Nebraska winters.

29

SCHULER TRNSPRTR-1943-L089

3/23/23 SOR : L089
1B (99.5%) #4842896

5L TRANSPORTER 4916-25F

SCHULER TRANSPORTER-1943

SOR MARLEE AMPLIFY 8101F

SCHULER REBEL 0029X

SOR BRASKA REBEL D590

SOR BRASKA NK U355

act. BW	75
WW ratio	106
ADG ratio	99
YW ratio	103
IMF ratio	128
REA ratio	105
adj. SC	34.1
Frame	Mod

ProS: 115 / 15%					HerdBuilder: 75 / 11%					GridMaster: 40 / 47%		
CED	BW	WW	ADG	YW	MLK	HPG	CEM	STY	MRB	YG	REA	
17	-4.7	74	.26	115	31	14	8	17	.53	.09	.10	
6%	9%	10%	30%	16%	12%	14%	32%	25%	27%	64%	58%	
Docility: 2					AoD: 7		dMPPA: 101			dam's CIV: \$18.80		

Transporter is a proven sire to improve quality grade, udder quality and foot structure. He also sires excellent spread from low birthweight to rapid early growth as seen in this son who combines the easiest calving 6% with the heaviest weaning 10%.

30

SCHULER TRANSPORTER-L005

2/20/23 SOR : L005
1B (99.7%) #4842728

5L BOURNE 117-48A

5L TRANSPORTER 4916-25F

5L ROSE 4104-4916

SCHULER COMBO G047

SOR BRASKA COMBO-J697

SOR BRASKA EPIC-B034 D471

act. BW	69
WW ratio	107
ADG ratio	102
YW ratio	105
IMF ratio	90
REA ratio	114
adj. SC	36.1
Frame	Mod

ProS: 118 / 12%					HerdBuilder: 61 / 31%					GridMaster: 57 / 16%		
CED	BW	WW	ADG	YW	MLK	HPG	CEM	STY	MRB	YG	REA	
12	-.8	81	.30	129	27	15	6	16	.67	.12	.17	
56%	71%	3%	9%	4%	40%	7%	81%	31%	11%	78%	43%	
Docility: 2					AoD: 2		dMPPA: 103			dam's CIV: 2-Yr-Old		

Transporter sires wide-based and dense made cattle that pack a lot of pounds into a moderate frame. That description fits Lot 30 who supports single digit ranks for pay-weight and gain with strong weaning and post-weaning ratios.



Lot 30- SCHULER TRANSPORTER-L005

31

SCHULER CORNERSTONE-L106

3/22/23 SOR : L106
1B (97%) #4842930

5L GENUINE 1603-195C

WEDEL CORNERSTONE 0224H

WFL FRANKLY F8193

5L DEFENDER 560-30Z

SOR BRASKA DEFENDER F952

SOR OT BRSKANBY856 A907

act. BW	77
WW ratio	103
ADG ratio	93
YW ratio	98
IMF ratio	103
REA ratio	111
adj. SC	32.6
Frame	Mod-

ProS: 84 / 61%					HerdBuilder: 28 / 89%					GridMaster: 56 / 18%		
CED	BW	WW	ADG	YW	MLK	HPG	CEM	STY	MRB	YG	REA	
17	-4.1	72	.26	114	30	11	10	10	.72	-.07	.29	
6%	14%	14%	26%	18%	15%	64%	7%	94%	8%	5%	20%	
Docility: 1					AoD: 5		dMPPA: 102			dam's CIV: \$9.55		

32

SCHULER CORNERSTONE-3316

2/25/23 SOR : 3316
1A (100%) #4842136

5L GENUINE 1603-195C

WEDEL CORNERSTONE 0224H

WFL FRANKLY F8193

SCHULER DISCIPLINE 8506F

SOR DUCHESS DISCIPLINE-1391

SOR DCHSS NEBU P707 1557Y

act. BW	70
WW ratio	102
ADG ratio	109
YW ratio	106
IMF ratio	103
REA ratio	96
adj. SC	34.8
Frame	Mod

ProS: 99 / 35%					HerdBuilder: 50 / 52%					GridMaster: 49 / 28%		
CED	BW	WW	ADG	YW	MLK	HPG	CEM	STY	MRB	YG	REA	
16	-3.2	70	.26	112	32	13	10	14	.63	.05	.09	
15%	26%	19%	28%	22%	6%	20%	8%	64%	14%	38%	62%	
Docility: 1					AoD: 2		dMPPA: 101			dam's CIV: 2-Yr-Old		

Our goal is to offer uniform groups of bulls that excel in economically relevant traits with the ability to improve the necessary phenotypic traits of feet, legs, udders and fleshing ability. These Cornerstone brothers selling as Lots 31 and 32 are great examples and could be used interchangeably. Both have excellent calving ease and gain, both excel for maternal calving ease, and both should sire calves that earn quality grade premiums without yield grade discounts. Did we miss anything?

SCHULER RED ANGUS

33

SCHULER CORNERSTONE-L085

3/22/23 SOR : L085
1B (99.8%) #4842888

5L GENUINE 1603-195C

WEDEL CORNERSTONE 0224H

WFL FRANKLY F8193

SCHULER RELEVANCE C884

SOR BRASKA RELEVANCE E233

SOR BRASKA ENDRANCE B625

act. BW	82
WW ratio	104
ADG ratio	92
YW ratio	98
IMF ratio	96
REA ratio	106
adj. SC	33.1
Frame	Mod

ProS: 102 / 31%				HerdBuilder: 61 / 31%				GridMaster: 41 / 44%			
CED	BW	WW	ADG	YW	MLK	HPG	CEM	STY	MRB	YG	REA
16	-3.6	71	.25	112	30	16	9	15	.60	-.04	.21
13%	19%	16%	34%	22%	16%	4%	11%	49%	18%	10%	34%
Docility: 2		AoD: 6		dMPPA: 101		dam's CIV: \$33.90					

34

SCHULER KING ARTHUR-L107

3/22/23 SOR : L107
1B (99.8%) #4842932

WFL MERLIN 018A

LSF SRR KING ARTHUR 0136H

LSF SRR RAINDANC A3335 D6211

SCHULER AMPLIFY 6206D

SOR BRASKA AMPLIFY F977

SOR BRASKA NVUS B690

act. BW	85
WW ratio	110
ADG ratio	109
YW ratio	110
IMF ratio	93
REA ratio	104
adj. SC	38.1
Frame	Mod

ProS: 98 / 37%				HerdBuilder: 50 / 53%				GridMaster: 48 / 29%			
CED	BW	WW	ADG	YW	MLK	HPG	CEM	STY	MRB	YG	REA
13	-2.6	86	.33	139	32	13	6	14	.61	-.01	.25
50%	35%	1%	3%	1%	6%	27%	78%	57%	16%	16%	27%
Docility: 1		AoD: 5		dMPPA: 105		dam's CIV: \$41.45					

This King Arthur son significantly bested his contemporaries at the scale for weaning and yearling weight. His WW and YW EPDs are both top 1% and his ADG is top 3%. Also note his big scrotal and dam's CIV (Calving Interval Value).



Lot 35 - SCHULER KING ARTHUR-3366

35

SCHULER KING ARTHUR-3366

3/17/23 SOR : 3366
1B (99.6%) #4842228

WFL MERLIN 018A

LSF SRR KING ARTHUR 0136H

LSF SRR RAINDANC A3335 D6211

5L TOP FLIGHT 3010-491A

SOR KITTY TOP FLIGHT 6778D

SOR KITTY P786 7858T

act. BW	85
WW ratio	109
ADG ratio	104
YW ratio	106
IMF ratio	76
REA ratio	103
adj. SC	35.4
Frame	Mod

ProS: 76 / 72%				HerdBuilder: 64 / 26%				GridMaster: 13 / 93%			
CED	BW	WW	ADG	YW	MLK	HPG	CEM	STY	MRB	YG	REA
11	-1.2	86	.27	130	32	14	7	15	.39	.02	.17
77%	64%	1%	21%	4%	8%	16%	62%	49%	57%	27%	43%
Docility: 1		AoD: 7		dMPPA: 104		dam's CIV: \$38.90					

36

SCHULER KING ARTHUR-L037

3/11/23 SOR : L037
1B (99.7%) #4842792

WFL MERLIN 018A

LSF SRR KING ARTHUR 0136H

LSF SRR RAINDANC A3335 D6211

SCHULER BOURNE-E601

SOR BRASKA BOURNE-E601-G451

SOR BRASKA STRATEGY C147

act. BW	78
WW ratio	104
ADG ratio	114
YW ratio	109
IMF ratio	77
REA ratio	107
adj. SC	34.7
Frame	Mod

ProS: 81 / 65%				HerdBuilder: 50 / 52%				GridMaster: 30 / 67%			
CED	BW	WW	ADG	YW	MLK	HPG	CEM	STY	MRB	YG	REA
13	-3.0	82	.30	131	32	14	7	14	.50	.06	.15
41%	29%	2%	8%	3%	7%	16%	57%	64%	32%	49%	47%
Docility: 1		AoD: 4		dMPPA: 103		dam's CIV: \$51.37					

37

SCHULER ENERGIZE-3374

3/18/23 SOR : 3374
1A (100%) #4842244

BIEBER CL ATOMIC C218

BIEBER CL ENERGIZE F121

BIEBER CL ADELLE 575D

SCHULER SUPREMACY 7177E

SOR LILLIAN SUPREMACY-9591

SOR LILLIAN EPIC 4237B

act. BW	79
WW ratio	98
ADG ratio	83
YW ratio	91
IMF ratio	86
REA ratio	100
adj. SC	35.9
Frame	Mod

ProS: 120 / 11%				HerdBuilder: 68 / 19%				GridMaster: 52 / 24%			
CED	BW	WW	ADG	YW	MLK	HPG	CEM	STY	MRB	YG	REA
15	-3.7	66	.29	114	26	16	7	15	.39	.02	.34
25%	19%	30%	11%	18%	48%	3%	51%	46%	57%	25%	14%
Docility: 1		AoD: 4		dMPPA: 97		dam's CIV: \$31.14					

The King Arthur sons selling as Lots 34-36 will work great on a set of wet heifers or running age cows that need more growth and muscle without getting out of bounds on calving ease or mature cow size. Note the CIV (Calving Ease Interval) of these three dams.

38

SCHULER ENERGIZE-3354

3/14/23 SOR : 3354
1A (100%) #4842204

BIEBER CL ATOMIC C218

BIEBER CL ENERGIZE F121

BIEBER CL ADELLE 575D

5L BOURNE 670-111C

SOR MARLEE BOURNE 7896E

SOR MARLEE DBL DSGN 4260B

act. BW	81
WW ratio	115
ADG ratio	95
YW ratio	105
IMF ratio	105
REA ratio	102
adj. SC	36.8
Frame	Mod

ProS: 119 / 11%				HerdBuilder: 76 / 10%				GridMaster: 43 / 39%			
CED	BW	WW	ADG	YW	MLK	HPG	CEM	STY	MRB	YG	REA
14	-2.8	75	.28	120	31	17	6	17	.44	.05	.29
29%	32%	8%	17%	10%	10%	2%	70%	24%	45%	39%	20%
Docility: 1		AoD: 6		dMPPA: 104		dam's CIV: \$53.84					

The dam of Lot 38 is a maternal sister to Accelerated Genetics' sire, Schuler Supremacy 7177E, and has been one of our most consistent producers. Her big CIV is a product from her 372-day calving interval and conceiving all five of her calves on the first A.I. service. Our goal to "Get the Cow Right First" and it starts by duplicating the ones that reliably conceive early every year.

39

SCHULER ENERGIZE-L062

3/17/23 SOR : L062
1B (99.7%) #4842842

BIEBER CL ATOMIC C218

BIEBER CL ENERGIZE F121

BIEBER CL ADELLE 575D

SCHULER CONFIDENCE C810

SOR BRASKA CONFIDENCE-G406

SOR BRASKA EPIC B657

act. BW	86
WW ratio	102
ADG ratio	117
YW ratio	109
IMF ratio	97
REA ratio	101
adj. SC	34.9
Frame	Mod

ProS: 93 / 45%				HerdBuilder: 44 / 64%				GridMaster: 49 / 29%			
CED	BW	WW	ADG	YW	MLK	HPG	CEM	STY	MRB	YG	REA
14	-2.7	70	.27	114	28	15	6	12	.59	.08	.13
38%	34%	19%	20%	18%	30%	7%	81%	78%	19%	60%	51%
Docility: 1		AoD: 4		dMPPA: 101		dam's CIV: \$57.27					

Lot 39 delivers a similar EPD profile and phenotype to his half-brother who sells as Lot 38. He also has a high CIV dam that is 100% for A.I. sired calves.

40

SCHULER TRANSPORTER-L606

2/18/23 SOR : L606
1B (99.6%) #4843206

5L BOURNE 117-48A

5L TRANSPORTER 4916-25F

5L ROSE 4104-4916

WFL RETAIL CUT F8107

SOR BRASKA RETAIL CUT-J630

SOR BRASKA TOPGUN-G332

act. BW	69
WW ratio	108
ADG ratio	118
YW ratio	113
IMF ratio	
REA ratio	
adj. SC	36.0
Frame	Mod

ProS: 111 / 19%				HerdBuilder: 55 / 42%				GridMaster: 55 / 18%			
CED	BW	WW	ADG	YW	MLK	HPG	CEM	STY	MRB	YG	REA
16	-3.5	77	.29	124	26	14	7	14	.70	.06	.21
11%	21%	5%	13%	7%	46%	14%	47%	57%	9%	44%	34%
Docility: 1		AoD: 2		dMPPA: 103		dam's CIV: 2-Yr-Old					

If you like them big-middled, wide-based and sound-footed, do not miss this Transporter son that spreads the easiest calving 11% of the breed to the heaviest 7% at yearling.



2024

Zoetis partnered with the Schuler family to earn the winning trade show booth at the recent NCBA convention in Orlando, Florida.



Lot 39 - SCHULER ENERGIZE-L062



Lot 40 - SCHULER TRANSPORTER-L606

SCHULER RED ANGUS

41

SCHULER TRANSPORTER-L034

3/10/23 SOR : L034
1B (99.9%) #4842786

5L BOURNE 117-48A

5L TRANSPORTER 4916-25F

5L ROSE 4104-4916

WFL PROFITMAKER E7030

SOR BRASKA PROFITMAKER-G341

SOR BRASKA BOURNE E217

act. BW	83
WW ratio	101
ADG ratio	86
YW ratio	93
IMF ratio	107
REA ratio	99
adj. SC	36.2
Frame	Mod-

ProS: 117 / 13%				HerdBuilder: 66 / 22%				GridMaster: 51 / 25%			
CED	BW	WW	ADG	YW	MLK	HPG	CEM	STY	MRB	YG	REA
15	-4.5	70	.26	111	26	16	7	15	.71	.11	.08
18%	10%	18%	31%	22%	48%	3%	51%	48%	8%	75%	63%
Docility: 2		AoD: 4		dMPPA: 101		dam's CIV: \$51.37					

We were fortunate to get some of the first semen produced by ProfitMaker and were blessed with some amazing daughters. They are just now coming into their reproductive prime. The dam of Lot 41 supports her elite CIV with three calves born at the beginning of each calving season.



Lot 43 - SCHULER TRANSPORTER-L010

42

SCHULER TRANSPORTER-3363

3/17/23 SOR : 3363
1A (100%) #4842222

5L BOURNE 117-48A

5L TRANSPORTER 4916-25F

5L ROSE 4104-4916

5L POSTMAN 5631-543A

SOR CRIMSON POSTMAN 7893E

SOR CRIMSON ROM 5037R

act. BW	79
WW ratio	98
ADG ratio	99
YW ratio	99
IMF ratio	150
REA ratio	91
adj. SC	36.9
Frame	Mod

ProS: 123 / 9%				HerdBuilder: 67 / 21%				GridMaster: 56 / 17%			
CED	BW	WW	ADG	YW	MLK	HPG	CEM	STY	MRB	YG	REA
15	-2.2	71	.31	120	20	15	8	16	.65	.16	.02
25%	44%	16%	7%	10%	92%	8%	38%	39%	12%	91%	75%
Docility: 3		AoD: 6		dMPPA: 101		dam's CIV: \$20.82					

We consistently rely on Transporter to deliver moderate size, fleshing ability, and excellent feet and udders. When we purchased him five years ago, we were perhaps more focused on his ability to add pay-weight and improve quality grade. We now take all the above for granted but love the subtle reminders when progeny like Lot 42 peg out the ultrasound machine with a 150 IMF ratio!

43

SCHULER TRANSPORTER-L010

2/23/23 SOR : L010
1B (99.9%) #4842738

5L BOURNE 117-48A

5L TRANSPORTER 4916-25F

5L ROSE 4104-4916

WFL PROFITMAKER E7030

SOR BRASKA PROFITMAKER-J580

SOR BRASKA EDGE E316

act. BW	72
WW ratio	107
ADG ratio	104
YW ratio	106
IMF ratio	87
REA ratio	109
adj. SC	35.2
Frame	Mod-

ProS: 119 / 11%				HerdBuilder: 70 / 16%				GridMaster: 49 / 28%			
CED	BW	WW	ADG	YW	MLK	HPG	CEM	STY	MRB	YG	REA
14	-2.0	79	.27	123	25	16	6	16	.66	.10	.14
38%	48%	4%	20%	8%	59%	3%	69%	39%	12%	69%	49%
Docility: 1		AoD: 2		dMPPA: 103		dam's CIV: 2-Yr-Old					



44

SCHULER TRNSPRTR-1943-3381

3/19/23 SOR : 3381
1A (100%) #4842258

5L TRANSPORTER 4916-25F

SCHULER TRANSPORTER-1943

SOR MARLEE AMPLIFY 8101F

5L TOP FLIGHT 3010-491A

SOR BRASKA TOP FLIGHT 7863E

SOR GRNT STRATEGY 3955A

act. BW	86
WW ratio	110
ADG ratio	98
YW ratio	104
IMF ratio	99
REA ratio	104
adj. SC	36.0
Frame	Mod+

ProS: 118 / 12%				HerdBuilder: 80 / 7%				GridMaster: 38 / 50%			
CED	BW	WW	ADG	YW	MLK	HPG	CEM	STY	MRB	YG	REA
14	-3.3	79	.27	123	27	16	7	17	.43	.03	.22
32%	24%	4%	20%	8%	36%	3%	53%	22%	47%	30%	32%
Docility: 1		AoD: 6		dMPPA: 101		dam's CIV: (\$5.73)					

We invite you to check out Zoetis' "Born of the Bond" series at:

<https://www.zoetis.com/cattle/born-of-the-bond/>

45

SCHULER GAIN N GRADE-L065

3/17/23 SOR : L065
1B (96.6%) #4842848

SCHULER RANCH HAND F606

SCHULER GAIN N GRADE J876

SOR BRASKA DOMAIN F953

SCHULER ENVOY 2115Z

SOR BRASKA ENVOY B100

SOR BRASKA OT CMT Z705

act. BW	84
WW ratio	99
ADG ratio	103
YW ratio	102
IMF ratio	117
REA ratio	107
adj. SC	35.9
Frame	Mod-

ProS: 96 / 41%				HerdBuilder: 70 / 17%				GridMaster: 26 / 76%			
CED	BW	WW	ADG	YW	MLK	HPG	CEM	STY	MRB	YG	REA
14	-1.0	69	.28	114	28	11	8	18	.40	.09	-.03
34%	67%	20%	17%	17%	30%	59%	35%	12%	54%	61%	84%
Docility: 1		AoD: 9		dMPPA: 101		dam's CIV: \$22.03					

Looks like we named this bull right...just like his dad!



Dr. Ivan Rush, UNL, was instrumental in helping us collect individual data at the plant for our first sire-identified carcass tests. Now retired from UNL, Ivan is still active in the beef cattle industry and is a board member of the Nebraska Beef Council.

46

SCHULER GAIN N GRADE-3441

3/26/23 SOR : 3441
1B (99.3%) #4842378

SCHULER RANCH HAND F606

SCHULER GAIN N GRADE J876

SOR BRASKA DOMAIN F953

LCOC HIGH NOON A093R

SOR MINRVNO NOON 3962A

SOR MINRVNO LAN 5038R

act. BW	89
WW ratio	113
ADG ratio	112
YW ratio	113
IMF ratio	84
REA ratio	108
adj. SC	38.2
Frame	Mod

ProS: 108 / 22%				HerdBuilder: 75 / 11%				GridMaster: 34 / 60%			
CED	BW	WW	ADG	YW	MLK	HPG	CEM	STY	MRB	YG	REA
13	-1.7	81	.31	130	29	12	8	18	.35	.05	.31
41%	54%	3%	7%	4%	20%	42%	38%	10%	67%	39%	18%
Docility: 1		AoD: 10		dMPPA: 105		dam's CIV: \$49.00					

If you like to buy bulls from dams that have demonstrated superior environmental fit and adaptability, look at Lot 46. His 10-year-old dam still maintains a 369-day calving interval and weaned her 9th calf at a 113-weaning ratio.

47

SCHULER GAIN N GRADE-L040

3/12/23 SOR : L040
1B (99.3%) #4842798

SCHULER RANCH HAND F606

SCHULER GAIN N GRADE J876

SOR BRASKA DOMAIN F953

5L TRANSPORTER 4916-25F

SOR BRASKA TRANSPORTER H731

SOR BRASKA RELEVANCE E233

act. BW	75
WW ratio	97
ADG ratio	116
YW ratio	107
IMF ratio	122
REA ratio	101
adj. SC	36.8
Frame	Mod-

ProS: 112 / 18%				HerdBuilder: 75 / 11%				GridMaster: 36 / 55%			
CED	BW	WW	ADG	YW	MLK	HPG	CEM	STY	MRB	YG	REA
15	-3.1	74	.29	121	25	16	7	18	.49	.13	.08
19%	26%	9%	11%	9%	60%	3%	60%	9%	34%	81%	63%
Docility: 1		AoD: 3		dMPPA: 99		dam's CIV: \$44.25					

With ratios of 116 for post-weaning gain and 122 for IMF, Lot 47 makes a strong case that he's the right bull to help you sell more pounds of PRIME.

48

SCHULER MATCHMAKER-3314

2/23/23 SOR : 3314
1B (99.9%) #4842132

WFL PROFITMAKER E7030

SCHULER MATCHMAKER 1974

SOR SHASTALADY HORIZON 5381C

SCHULER TOP HAND D911

SOR ISOMI TOP HAND-1360

SOR ISOMI BOURNE 7838E

act. BW	64
WW ratio	108
ADG ratio	106
YW ratio	107
IMF ratio	102
REA ratio	97
adj. SC	34.2
Frame	Mod+

ProS: 88 / 53%				HerdBuilder: 62 / 29%				GridMaster: 26 / 75%			
CED	BW	WW	ADG	YW	MLK	HPG	CEM	STY	MRB	YG	REA
13	-2.7	78	.28	122	32	16	6	15	.48	.02	.10
42%	34%	5%	19%	8%	7%	3%	79%	46%	36%	25%	58%
Docility: 1		AoD: 2		dMPPA: 103		dam's CIV: 2-Yr-Old					

49

SCHULER MATCHMAKER-3368

3/17/23 SOR : 3368
1B (99.9%) #4842232

WFL PROFITMAKER E7030

SCHULER MATCHMAKER 1974

SOR SHASTALADY HORIZON 5381C

SCHULER AMPLIFY 6206D

SOR MINRVO AMPLIFY-9562

SOR MINRVNO DENIRO 2652Z

act. BW	78
WW ratio	109
ADG ratio	117
YW ratio	114
IMF ratio	81
REA ratio	121
adj. SC	36.4
Frame	Mod+

ProS: 89 / 52%				HerdBuilder: 52 / 49%				GridMaster: 37 / 53%			
CED	BW	WW	ADG	YW	MLK	HPG	CEM	STY	MRB	YG	REA
12	-3.4	74	.27	116	36	13	3	16	.48	-.03	.31
67%	23%	11%	26%	15%	1%	24%	97%	31%	36%	11%	18%
Docility: 1		AoD: 4		dMPPA: 107		dam's CIV: \$42.59					

Lot 48 and 49 are 5/8th brothers as Top Hand and Amplify are sons of Defender 560-30Z. Top Hand and Amplify became go-to sires for us with their outstanding fleshing ability and phenotype. These two Matchmaker sons excelled in performance traits and could be used interchangeably in the cowherd.

SCHULER RED ANGUS



Lot 50 -SCHULER CORNERSTONE-3343

50

SCHULER CORNERSTONE-3343

3/12/23 SOR : 3343
1A (100%) #4842182

5L GENUINE 1603-195C

WEDEL CORNERSTONE 0224H

WFL FRANKLY F8193

5L DEFENDER 3290-57B

SOR MARLEE DEF-57B 7852E

SOR MARLEE BRN CMT 9206W

act. BW	71
WW ratio	97
ADG ratio	94
YW ratio	96
IMF ratio	105
REA ratio	104
adj. SC	36.3
Frame	Mod-

ProS: 99 / 35%					HerdBuilder: 39 / 75%				GridMaster: 61 / 12%		
CED	BW	WW	ADG	YW	MLK	HPG	CEM	STY	MRB	YG	REA
16	-3.7	67	.25	107	33	12	10	12	.77	-.07	.33
9%	19%	28%	34%	30%	4%	38%	7%	80%	5%	5%	15%
Docility: 1					AoD: 6		dMPPA: 103		dam's CIV: \$52.49		

Lot 50 is a strong-topped Cornerstone son that defies the antagonisms with direct (CED) and maternal (CEM) calving ease. His fertile dam dropped her fifth calf the day before her sixth birthday which helped push her CIV to the top of the herd. She is not only fertile, but she also sports a 33 Milk EPD. Those five calves had an average weaning ratio of 104.

51

SCHULER CORNERSTONE-3389

3/20/23 SOR : 3389
1A (100%) #4842274

5L GENUINE 1603-195C

WEDEL CORNERSTONE 0224H

WFL FRANKLY F8193

SCHULER AMPLIFY 6206D

SOR BELL AMPLIFY 8180F

SOR BELL BC 6140S

act. BW	100
WW ratio	123
ADG ratio	92
YW ratio	108
IMF ratio	90
REA ratio	99
adj. SC	36.0
Frame	Mod+

ProS: 114 / 16%					HerdBuilder: 54 / 45%				GridMaster: 61 / 12%		
CED	BW	WW	ADG	YW	MLK	HPG	CEM	STY	MRB	YG	REA
12	-1.1	86	.31	136	32	13	6	14	.62	-.15	.48
56%	65%	1%	6%	2%	6%	19%	70%	55%	15%	2%	5%
Docility: 1					AoD: 5		dMPPA: 107		dam's CIV: \$13.05		

52

SCHULER CORNERSTONE-3413

4/4/23 SOR : 3413
1A (100%) #4842322

5L GENUINE 1603-195C

WEDEL CORNERSTONE 0224H

WFL FRANKLY F8193

SCHULER ENDURANCE 2101Z

SOR RUTH ENDURANCE 6743D

SOR RUTH CMMTNT 0448X

act. BW	83
WW ratio	105
ADG ratio	93
YW ratio	99
IMF ratio	109
REA ratio	103
adj. SC	34.0
Frame	Mod

ProS: 103 / 30%					HerdBuilder: 44 / 66%				GridMaster: 59 / 13%		
CED	BW	WW	ADG	YW	MLK	HPG	CEM	STY	MRB	YG	REA
13	-1.3	79	.30	127	32	10	8	14	.72	-.01	.19
47%	61%	4%	9%	5%	8%	68%	25%	57%	8%	14%	38%
Docility: 1					AoD: 7		dMPPA: 107		dam's CIV: \$9.94		

Cornerstone has earned a reputation for superior marbling like his famous sire, 5L Genuine 1603-195C. Cornerstone adds to his sire's legacy by contributing superior REA, Yield Grade and Feed Efficiency. Both Lot 51 and 52 predict to improve pay-weight and quality grade while excelling for Yield Grade and REA.



David's Christmas Cattle-Art

53

SCHULER COMBO-J794-3430

3/28/23 SOR : 3430
1B (99.4%) #4842356

SCHULER COMBO G047

SCHULER COMBO-J794

SOR BRASKA EPIC B656

WFL PROFITMAKER E7030

SOR BELL PROFITMAKER 0057

SOR BELL AMPLIFY 8141F

act. BW	71
WW ratio	105
ADG ratio	106
YW ratio	106
IMF ratio	77
REA ratio	103
adj. SC	35.3
Frame	Mod

ProS: 115 / 15%					HerdBuilder: 65 / 23%				GridMaster: 49 / 28%		
CED	BW	WW	ADG	YW	MLK	HPG	CEM	STY	MRB	YG	REA
14	-3.3	80	.30	128	33	14	8	16	.47	.02	.31
29%	24%	3%	9%	4%	5%	16%	32%	37%	38%	24%	18%
Docility: 2					AoD: 3		dMPPA: 103		dam's CIV: \$5.04		

54

SCHULER COURIER-3405

4/7/23 SOR : 3405
1B (99.9%) #4842306

5L TRANSPORTER 4916-25F

SCHULER COURIER J859

SOR BRASKA AMPLIFY F987

SCHULER OMYGOODNESS 5530C

SOR RUFX OMG-5530C 7890E

SOR RUFX SUPREME 1545Y

act. BW	86
WW ratio	98
ADG ratio	103
YW ratio	101
IMF ratio	100
REA ratio	94
adj. SC	33.6
Frame	Mod

ProS: 110 / 20%					HerdBuilder: 71 / 16%				GridMaster: 39 / 48%			
CED	BW	WW	ADG	YW	MLK	HPG	CEM	STY	MRB	YG	REA	
11	-.6	77	.29	123	25	15	5	18	.42	.04	.24	
73%	74%	6%	12%	7%	60%	5%	87%	15%	49%	34%	29%	
Docility: 2		AoD: 6		dMPPA: 106		dam's CIV: \$6.16						

55

SCHULER ENERGIZE-3340

3/11/23 SOR : 3340
1A (100%) #4842176

BIEBER CL ATOMIC C218

BIEBER CL ENERGIZE F121

BIEBER CL ADELLE 575D

5L TRANSPORTER 4916-25F

SOR BETH TRANSPORTER 0059

SOR BETH ORACLE 8165F

act. BW	83
WW ratio	102
ADG ratio	84
YW ratio	93
IMF ratio	111
REA ratio	88
adj. SC	35.2
Frame	Mod

ProS: 113 / 17%					HerdBuilder: 56 / 41%				GridMaster: 57 / 16%			
CED	BW	WW	ADG	YW	MLK	HPG	CEM	STY	MRB	YG	REA	
15	-2.5	77	.31	126	27	15	7	15	.60	.06	.28	
22%	38%	6%	7%	5%	35%	8%	51%	53%	18%	47%	22%	
Docility: 2		AoD: 3		dMPPA: 105		dam's CIV: \$44.73						

56

SCHULER ENERGIZE-3440

3/26/23 SOR : 3440
1A (100%) #4842376

BIEBER CL ATOMIC C218

BIEBER CL ENERGIZE F121

BIEBER CL ADELLE 575D

WFL PROFITMAKER E7030

SOR QUEEN PROFITMAKER-9508

SOR QUEEN TOP FLIGHT 7859E

act. BW	75
WW ratio	98
ADG ratio	96
YW ratio	97
IMF ratio	69
REA ratio	101
adj. SC	36.7
Frame	Mod

ProS: 107 / 24%					HerdBuilder: 61 / 31%				GridMaster: 46 / 34%			
CED	BW	WW	ADG	YW	MLK	HPG	CEM	STY	MRB	YG	REA	
16	-4.8	67	.27	110	31	15	8	14	.47	.03	.26	
11%	8%	26%	24%	24%	12%	8%	40%	61%	38%	28%	25%	
Docility: 2		AoD: 4		dMPPA: 100		dam's CIV: \$1.85						

Stacking Energize and ProfitMaker in one pedigree is a great recipe for fewer assisted births and a higher percentage of calves in the weaning pen. We strive to produce "heifer bulls" like Lot 56 that come with adequate rib shape and natural thickness.



Lot 56 -SCHULER ENERGIZE-3440

57

SCHULER JUMPSTART-L084

3/22/23 SOR : L084
1B (99.9%) #4842886

BIEBER CL ENERGIZE F121

BIEBER JUMPSTART J137

BIEBER GALLEE 390G

SCHULER SUPREMACY 7177E

SOR BRASKA SUPREMACY-G389

SOR BRASKA NOON Z479

act. BW	89
WW ratio	100
ADG ratio	107
YW ratio	104
IMF ratio	110
REA ratio	96
adj. SC	35.1
Frame	Mod

ProS: 122 / 9%					HerdBuilder: 74 / 12%				GridMaster: 48 / 30%			
CED	BW	WW	ADG	YW	MLK	HPG	CEM	STY	MRB	YG	REA	
16	-3.3	78	.33	131	25	17	9	16	.44	.05	.28	
13%	24%	5%	3%	3%	63%	2%	13%	27%	45%	39%	22%	
Docility: 1		AoD: 4		dMPPA: 98		dam's CIV: \$34.71						

It's quite possible that over the last two years no sire group has been as eagerly anticipated as the Jumpstarts. Lot 57 demonstrates why by combining the easiest calving 13% with the fastest gaining 3%.

58

SCHULER TRANSPORTER-3317

2/25/23 SOR : 3317
1B (99.8%) #4842138

5L BOURNE 117-48A

5L TRANSPORTER 4916-25F

5L ROSE 4104-4916

SCHULER COMBO G047

SOR MINERVNO COMBO-1955

SOR MINRVNO TOP FLIGHT 7806E

act. BW	80
WW ratio	103
ADG ratio	96
YW ratio	100
IMF ratio	98
REA ratio	95
adj. SC	34.3
Frame	Mod

ProS: 113 / 17%					HerdBuilder: 62 / 29%				GridMaster: 52 / 24%			
CED	BW	WW	ADG	YW	MLK	HPG	CEM	STY	MRB	YG	REA	
13	-1.0	78	.29	125	25	16	6	16	.67	.12	.11	
50%	67%	4%	12%	6%	59%	4%	64%	37%	11%	77%	56%	
Docility: 2		AoD: 2		dMPPA: 101		dam's CIV: 2-Yr-Old						

SCHULER RED ANGUS



SCHULER TRANSPORTER-3310

2/21/23 SOR : 3310
1B (99.8%) #4842124

5L BOURNE 117-48A

5L TRANSPORTER 4916-25F

5L ROSE 4104-4916

SCHULER COMBO G047

SOR RUTH COMBO-1385

SOR RUTH DYNATREND 0514X

act. BW	80
WW ratio	106
ADG ratio	122
YW ratio	114
IMF ratio	96
REA ratio	96
adj. SC	41.6
Frame	Mod

ProS: 116 / 15%				HerdBuilder: 68 / 20%				GridMaster: 48 / 30%			
CED	BW	WW	ADG	YW	MLK	HPG	CEM	STY	MRB	YG	REA
13	.0	82	.30	130	26	14	6	18	.60	.14	.11
53%	83%	2%	9%	4%	54%	9%	76%	16%	18%	84%	56%
Docility: 1		AoD: 2		dMPPA: 102		dam's CIV: 2-Yr-Old					



SCHULER TRANSPORTER-L103

3/18/23 SOR : L103
1B (99.9%) #4842924

5L BOURNE 117-48A

5L TRANSPORTER 4916-25F

5L ROSE 4104-4916

BROWN ORACLE B112

SOR BRASKA ORACLE F925

SOR BRASKA REBEL D589

act. BW	85
WW ratio	103
ADG ratio	96
YW ratio	100
IMF ratio	108
REA ratio	93
adj. SC	34.4
Frame	Mod-

ProS: 117 / 13%				HerdBuilder: 68 / 20%				GridMaster: 49 / 28%			
CED	BW	WW	ADG	YW	MLK	HPG	CEM	STY	MRB	YG	REA
15	-2.1	77	.27	120	25	14	7	17	.65	.09	.17
26%	45%	5%	24%	10%	62%	12%	49%	25%	12%	65%	43%
Docility: 1		AoD: 5		dMPPA: 105		dam's CIV: \$28.54					

Lots 59, 60 and 61 stack the high performance, marbling sires; Transporter and Oracle, as Combo is an Oracle son. These 3/4 and 5/8 brothers average Top 6% weaning, 8% yearling and 14% marbling. They would work well together in a multi-sire pasture to improve uniformity, pay-weight and calf value.



SCHULER TRNSPRTR-J862-L151

4/11/23 SOR : L151
1B (98.5%) #4843020

5L TRANSPORTER 4916-25F

SCHULER TRANSPORTER-J862

SOR BRASKA AMPLIFY F974

BROWN ORACLE B112

SOR BRASKA ORACLE F903

SOR BRASKA REBEL D477

act. BW	77
WW ratio	95
ADG ratio	117
YW ratio	107
IMF ratio	92
REA ratio	93
adj. SC	36.7
Frame	Mod

ProS: 125 / 7%				HerdBuilder: 64 / 25%				GridMaster: 61 / 11%			
CED	BW	WW	ADG	YW	MLK	HPG	CEM	STY	MRB	YG	REA
14	-2.3	74	.29	121	27	13	7	16	.66	.05	.23
35%	42%	11%	11%	10%	37%	24%	45%	35%	12%	40%	30%
Docility: 2		AoD: 5		dMPPA: 102		dam's CIV: (\$26.62)					



SCHULER KING ARTHUR-L119

3/29/23 SOR : L119
1B (99.8%) #4842956

WFL MERLIN 018A

LSF SRR KING ARTHUR 0136H

LSF SRR RAINDANC A3335 D6211

SCHULER NEBULA P707 0050X

SOR BRASKA NB0050X A095

SOR BRASKA LAN U003

act. BW	94
WW ratio	108
ADG ratio	124
YW ratio	116
IMF ratio	119
REA ratio	108
adj. SC	34.8
Frame	Mod

ProS: 63 / 88%				HerdBuilder: 33 / 84%				GridMaster: 30 / 68%			
CED	BW	WW	ADG	YW	MLK	HPG	CEM	STY	MRB	YG	REA
10	-.1	87	.30	135	30	9	4	14	.43	.05	.13
89%	82%	1%	8%	2%	16%	88%	94%	62%	47%	43%	51%
Docility: 1		AoD: 10		dMPPA: 105		dam's CIV: \$1.05					



SCHULER KING ARTHUR-3448

3/25/23 SOR : 3448
1A (100%) #4842392

WFL MERLIN 018A

LSF SRR KING ARTHUR 0136H

LSF SRR RAINDANC A3335 D6211

SCHULER NEBULA P707 0050X

SOR GARNET NB0050X 3805A

SOR GARNET LAN 3610 5052R

act. BW	82
WW ratio	113
ADG ratio	113
YW ratio	114
IMF ratio	101
REA ratio	106
adj. SC	36.2
Frame	Mod

ProS: 70 / 80%				HerdBuilder: 45 / 62%				GridMaster: 25 / 77%			
CED	BW	WW	ADG	YW	MLK	HPG	CEM	STY	MRB	YG	REA
11	-1.1	88	.30	135	30	9	5	15	.44	.05	.14
76%	65%	1%	10%	2%	14%	86%	87%	44%	45%	38%	49%
Docility: 3		AoD: 10		dMPPA: 104		dam's CIV: (\$5.90)					



SCHULER COMBO-J870-3379

3/19/23 SOR : 3379
1B (99.8%) #4842254

SCHULER COMBO G047

SCHULER COMBO-J870

SOR BRASKA DD B679

WFL PROFITMAKER E7030

SOR DUCHESS PROFITMAKER 0161

SOR DUCHESS NK-9048W 2675Z

act. BW	77
WW ratio	110
ADG ratio	93
YW ratio	102
IMF ratio	114
REA ratio	95
adj. SC	37.0
Frame	Mod-

ProS: 104 / 28%				HerdBuilder: 75 / 12%				GridMaster: 29 / 69%			
CED	BW	WW	ADG	YW	MLK	HPG	CEM	STY	MRB	YG	REA
15	-3.1	80	.26	121	32	14	9	17	.31	.01	.26
23%	26%	3%	30%	9%	8%	10%	20%	24%	76%	23%	25%
Docility: 2		AoD: 3		dMPPA: 106		dam's CIV: \$4.23					

Lots 62 and 63 are 3/4 brothers, and both had dominating performance and ultrasound ratios. Also, both are out of 0050X daughters that have stood the test by producing above the herd average on an annual basis and weaning nine calves as 10-year-olds.

65

SCHULER GAIN N GRADE-3394

3/22/23 SOR : 3394
1B (99.8%) #4842284

SCHULER RANCH HAND F606

SCHULER GAIN N GRADE J876

SOR BRASKA DOMAIN F953

SCHULER ENVOY 2115Z

SOR RUTH ENVOY 5324C

SOR RUTH DD 3950A

act. BW	88
WW ratio	106
ADG ratio	99
YW ratio	103
IMF ratio	104
REA ratio	96
adj. SC	35.6
Frame	Mod

ProS: 116 / 14%					HerdBuilder: 88 / 3%					GridMaster: 28 / 71%		
CED	BW	WW	ADG	YW	MLK	HPG	CEM	STY	MRB	YG	REA	
14	-9	74	.27	118	28	14	7	20	.35	.07	.19	
30%	68%	9%	23%	13%	35%	12%	49%	4%	67%	49%	38%	
Docility: 1		AoD: 8		dMPPA: 100		dam's CIV: \$44.28						



66

SCHULER GAIN N GRADE-L058

3/16/23 SOR : L058
1B (99.4%) #4842834

SCHULER RANCH HAND F606

SCHULER GAIN N GRADE J876

SOR BRASKA DOMAIN F953

SCHULER REBEL 0029X

SOR BRASKA REBEL D548

SOR BRASKA NOON Z479

act. BW	86
WW ratio	102
ADG ratio	117
YW ratio	110
IMF ratio	85
REA ratio	108
adj. SC	35.4
Frame	Mod

ProS: 107 / 23%					HerdBuilder: 82 / 6%					GridMaster: 26 / 76%		
CED	BW	WW	ADG	YW	MLK	HPG	CEM	STY	MRB	YG	REA	
15	-1.7	79	.31	128	27	13	7	19	.33	.11	.03	
26%	54%	4%	7%	4%	40%	20%	47%	8%	72%	73%	73%	
Docility: 2		AoD: 7		dMPPA: 99		dam's CIV: \$44.29						



Lot 66 -SCHULER GAIN N GRADE-L058

67

SCHULER GAIN N GRADE-L132

4/5/23 SOR : L132
1B (99.3%) #4842982

SCHULER RANCH HAND F606

SCHULER GAIN N GRADE J876

SOR BRASKA DOMAIN F953

5L TOPGUN 560-65B

SOR BRASKA TOPGUN-G357

SOR BRASKA DYNASTY E213

act. BW	83
WW ratio	108
ADG ratio	92
YW ratio	100
IMF ratio	84
REA ratio	102
adj. SC	33.5
Frame	Mod

ProS: 107 / 24%					HerdBuilder: 62 / 28%					GridMaster: 45 / 36%		
CED	BW	WW	ADG	YW	MLK	HPG	CEM	STY	MRB	YG	REA	
14	-2.2	82	.31	132	26	15	6	16	.47	.02	.28	
35%	44%	2%	5%	3%	49%	6%	78%	27%	38%	25%	22%	
Docility: 2		AoD: 4		dMPPA: 100		dam's CIV: (\$25.58)						

68

SCHULER GAIN N GRADE-L070

3/18/23 SOR : L070
1B (99%) #4842858

SCHULER RANCH HAND F606

SCHULER GAIN N GRADE J876

SOR BRASKA DOMAIN F953

SCHULER REBEL 0029X

SOR BRASKA REBEL D534

SOR BRASKA ENVY W630

act. BW	80
WW ratio	102
ADG ratio	95
YW ratio	99
IMF ratio	75
REA ratio	113
adj. SC	33.9
Frame	Mod

ProS: 90 / 50%					HerdBuilder: 78 / 9%					GridMaster: 12 / 93%		
CED	BW	WW	ADG	YW	MLK	HPG	CEM	STY	MRB	YG	REA	
17	-3.3	72	.26	113	30	12	8	19	.27	.08	.01	
5%	24%	14%	29%	19%	18%	45%	25%	5%	85%	57%	77%	
Docility: 1		AoD: 7		dMPPA: 99		dam's CIV: \$35.46						

SCHULER RED ANGUS



At birth, all calves are tagged, weighed and data recorded utilizing an app designed by David that downloads instantly into our database.



Lot 70 -SCHULER CORNERSTONE-L059



Lot 71 -SCHULER CORNERSTONE-L004

69

SCHULER CORNERSTONE-L095

3/25/23 SOR : L095
1B (99.8%) #4842908

5L GENUINE 1603-195C

WEDEL CORNERSTONE 0224H

WFL FRANKLY F8193

SCHULER DEFENDER 5551C

SOR BRASKA DEF-5551C E306

SOR BRASKA BC 242

act. BW	83
WW ratio	103
ADG ratio	90
YW ratio	97
IMF ratio	98
REA ratio	100
adj. SC	34.7
Frame	Mod

ProS: 106 / 25%				HerdBuilder: 55 / 41%				GridMaster: 51 / 25%			
CED	BW	WW	ADG	YW	MLK	HPG	CEM	STY	MRB	YG	REA
15	-2.4	73	.24	112	27	14	9	13	.68	-.10	.28
22%	40%	11%	40%	20%	43%	13%	16%	71%	10%	3%	22%
Docility: 1		AoD: 6		dMPPA: 99		dam's CIV: \$9.68					

Like his sire, Genuine, Cornerstone delivers superior marbling with excellent spread from CED to YW. Additionally, Cornerstone transmits superior feed efficiency and REA, reducing cost of gain and improving Yield Grade. The next three Lots, 69-71, give you the opportunity to install these profit-producing genetics into your herd.

70

SCHULER CORNERSTONE-L059

3/16/23 SOR : L059
1B (99.9%) #4842836

5L GENUINE 1603-195C

WEDEL CORNERSTONE 0224H

WFL FRANKLY F8193

3SCC DOMAIN A163

SOR BRASKA DOMAIN F000

SOR BRASKA RMCCOY B692

act. BW	83
WW ratio	102
ADG ratio	88
YW ratio	95
IMF ratio	125
REA ratio	98
adj. SC	32.9
Frame	Mod-

ProS: 96 / 40%				HerdBuilder: 49 / 56%				GridMaster: 48 / 31%			
CED	BW	WW	ADG	YW	MLK	HPG	CEM	STY	MRB	YG	REA
15	-1.9	75	.26	116	29	15	8	13	.61	-.02	.26
26%	50%	9%	30%	15%	25%	7%	25%	76%	16%	13%	25%
Docility: 2		AoD: 5		dMPPA: 99		dam's CIV: \$46.00					

The maternal grandsire of this Cornerstone son is 3SCC Domain A163. Domain is an outcross sire for us that produced easy-fleshing females with excellent feet and udders. Note her high CIV. Cows like that tend to earn their keep over and over.

71

SCHULER CORNERSTONE-L004

2/18/23 SOR : L004
1B (99.9%) #4842726

5L GENUINE 1603-195C

WEDEL CORNERSTONE 0224H

WFL FRANKLY F8193

5L TRANSPORTER 4916-25F

SOR BRASKA TRANSPORTER-J653

SOR BRASKA AMPLIFY F984

act. BW	72
WW ratio	106
ADG ratio	95
YW ratio	101
IMF ratio	114
REA ratio	94
adj. SC	33.5
Frame	Mod-

ProS: 98 / 37%				HerdBuilder: 31 / 86%				GridMaster: 67 / 7%			
CED	BW	WW	ADG	YW	MLK	HPG	CEM	STY	MRB	YG	REA
11	-2.1	78	.30	126	30	13	5	12	.81	-.04	.34
70%	45%	5%	9%	6%	13%	20%	86%	78%	4%	9%	14%
Docility: 1		AoD: 2		dMPPA: 102		dam's CIV: 2-Yr-Old					

Stacking Cornerstone and Transporter in one pedigree is a great way to get your next GridMaster jacket. With PRIME premiums exceeding \$200 per head, this Cornerstone son could be paying back dividends with his first calf crop.



SCHULER TRANSPORTER-3360

3/16/23 SOR : 3360
1B (99.9%) #4842216

5L BOURNE 117-48A

5L TRANSPORTER 4916-25F

5L ROSE 4104-4916

BROWN ORACLE B112

SOR RUTH ORACLE-9565

SOR RUTH NVUS 4269B

act. BW	80
WW ratio	99
ADG ratio	87
YW ratio	93
IMF ratio	98
REA ratio	93
adj. SC	33.9
Frame	Mod

ProS: 120 / 10%				HerdBuilder: 69 / 19%				GridMaster: 52 / 24%			
CED	BW	WW	ADG	YW	MLK	HPG	CEM	STY	MRB	YG	REA
14	-2.7	74	.26	115	24	16	5	16	.74	.09	.12
35%	34%	11%	31%	17%	72%	4%	83%	27%	6%	65%	54%
Docility: 2		AoD: 4		dMPPA: 99		dam's CIV: \$44.56					



SCHULER TRANSPORTER-L057

3/16/23 SOR : L057
1B (99.1%) #4842832

5L BOURNE 117-48A

5L TRANSPORTER 4916-25F

5L ROSE 4104-4916

SCHULER POSTMAN 6239D

SOR BRASKA PSTMN-6239D F025

SOR BRASKA ENT W717

act. BW	93
WW ratio	107
ADG ratio	106
YW ratio	107
IMF ratio	90
REA ratio	103
adj. SC	35.4
Frame	Mod

ProS: 117 / 13%				HerdBuilder: 72 / 15%				GridMaster: 46 / 35%			
CED	BW	WW	ADG	YW	MLK	HPG	CEM	STY	MRB	YG	REA
12	-2	75	.27	118	23	15	6	17	.62	.12	.10
67%	80%	8%	21%	12%	76%	6%	69%	21%	15%	78%	58%
Docility: 2		AoD: 5		dMPPA: 103		dam's CIV: \$45.37					

We think the quality in our 2024 Red Angus bull offering runs as deep as it ever has. The bulls on this page average Top 6% for weaning weight and Top 8% for yearling weight.



SCHULER TRNSPRTR-J852-3323

3/15/23 SOR : 3323
1B (99.8%) #4842150

5L TRANSPORTER 4916-25F

SCHULER TRANSPORTER-J852

SOR BRASKA AMPLIFY F009

SCHULER RANCH HAND F606

SOR GARNET RANCH HAND-1356

SOR GARNET DOMAIN 8217F

act. BW	69
WW ratio	103
ADG ratio	101
YW ratio	102
IMF ratio	86
REA ratio	102
adj. SC	31.3
Frame	Mod

ProS: 122 / 10%				HerdBuilder: 75 / 11%				GridMaster: 46 / 33%			
CED	BW	WW	ADG	YW	MLK	HPG	CEM	STY	MRB	YG	REA
14	-2.2	74	.30	123	24	13	7	17	.56	.08	.14
29%	44%	9%	8%	8%	65%	17%	60%	17%	22%	60%	49%
Docility: 1		AoD: 2		dMPPA: 101		dam's CIV: 2-Yr-Old					



SCHULER KING ARTHUR-L092

3/24/23 SOR : L092
1B (99.9%) #4842902

WFL MERLIN 018A

LSF SRR KING ARTHUR 0136H

LSF SRR RAINDANC A3335 D6211

BIEBER REAL MCCOY Y124

SOR BRASKA R MCCOY C189

SOR BRASKA PACKER Y754

act. BW	84
WW ratio	106
ADG ratio	99
YW ratio	103
IMF ratio	106
REA ratio	102
adj. SC	34.1
Frame	Mod+

ProS: 74 / 75%				HerdBuilder: 51 / 51%				GridMaster: 24 / 80%			
CED	BW	WW	ADG	YW	MLK	HPG	CEM	STY	MRB	YG	REA
12	-1.6	85	.26	127	29	15	9	12	.46	-.02	.22
66%	56%	1%	26%	5%	25%	5%	19%	83%	40%	13%	32%
Docility: 1		AoD: 8		dMPPA: 100		dam's CIV: \$40.33					



SCHULER KING ARTHUR-L087

3/23/23 SOR : L087
1B (99.5%) #4842892

WFL MERLIN 018A

LSF SRR KING ARTHUR 0136H

LSF SRR RAINDANC A3335 D6211

SCHULER ENVIOUS 2156Z

SOR BRASKA NVUS B690

SOR BRASKA NEBU P707 Y737

act. BW	82
WW ratio	106
ADG ratio	89
YW ratio	98
IMF ratio	80
REA ratio	92
adj. SC	35.6
Frame	Mod-

ProS: 93 / 45%				HerdBuilder: 63 / 27%				GridMaster: 30 / 68%			
CED	BW	WW	ADG	YW	MLK	HPG	CEM	STY	MRB	YG	REA
13	-1.9	84	.29	131	28	14	6	15	.55	.08	.03
51%	50%	1%	12%	3%	29%	9%	81%	46%	24%	55%	73%
Docility: 2		AoD: 9		dMPPA: 98		dam's CIV: \$31.06					



SCHULER JUMPSTART-L096

3/25/23 SOR : L096
1B (99.9%) #4842910

BIEBER CL ENERGIZE F121

BIEBER JUMPSTART J137

BIEBER GALLEE 390G

5L DEFENDER 560-30Z

SOR BRASKA DEFENDER D507

SOR BRASKA ENDRANCE B601

act. BW	77
WW ratio	96
ADG ratio	106
YW ratio	101
IMF ratio	78
REA ratio	106
adj. SC	34.2
Frame	Mod-

ProS: 98 / 37%				HerdBuilder: 54 / 44%				GridMaster: 44 / 38%			
CED	BW	WW	ADG	YW	MLK	HPG	CEM	STY	MRB	YG	REA
17	-4.4	76	.33	129	28	15	8	14	.46	-.01	.33
6%	11%	7%	3%	4%	30%	6%	28%	55%	40%	14%	15%
Docility: 1		AoD: 7		dMPPA: 103		dam's CIV: \$0.51					

Lot 77 will have extended utility in your program. He has sufficient calving ease to use safely on heifers but could also work well in the cowherd. You will not give up performance considering his top 3% ADG and 4% yearling weight. His moderate frame and dam's longevity suggest you may want to keep the daughters as well.

SCHULER RED ANGUS

78

SCHULER ENERGIZE-3362

3/16/23 SOR : 3362
1A (100%) #4842220

BIEBER CL ATOMIC C218

BIEBER CL ENERGIZE F121

BIEBER CL ADELLE 575D

SCHULER SUPREMACY 7177E

SOR BETH SUPREMACY-9561

SOR BETH FIRST DWN 4225B

act. BW	90
WW ratio	102
ADG ratio	112
YW ratio	108
IMF ratio	92
REA ratio	104
adj. SC	35.9
Frame	Mod

ProS: 122 / 9%					HerdBuilder: 68 / 19%					GridMaster: 54 / 20%		
CED	BW	WW	ADG	YW	MLK	HPG	CEM	STY	MRB	YG	REA	
14	-1.8	73	.32	123	27	15	7	16	.43	.01	.34	
39%	51%	12%	5%	7%	36%	6%	57%	34%	47%	22%	14%	
Docility: 3					AoD: 4		dMPPA: 99			dam's CIV: \$38.09		

79

SCHULER JUMPSTART-3446

3/25/23 SOR : 3446
1A (100%) #4842388

BIEBER CL ENERGIZE F121

BIEBER JUMPSTART J137

BIEBER GALLEE 390G

5L TOPGUN 560-65B

SOR MARLEE TOPGUN-9569

SOR MARLEE NB50X-3358A 5368C

act. BW	98
WW ratio	112
ADG ratio	113
YW ratio	113
IMF ratio	98
REA ratio	111
adj. SC	35.7
Frame	Mod

ProS: 110 / 20%					HerdBuilder: 54 / 44%					GridMaster: 56 / 18%		
CED	BW	WW	ADG	YW	MLK	HPG	CEM	STY	MRB	YG	REA	
13	-.7	91	.37	151	26	18	7	14	.48	.03	.36	
45%	73%	1%	1%	1%	46%	1%	60%	57%	36%	29%	12%	
Docility: 1					AoD: 4		dMPPA: 100			dam's CIV: \$4.29		

If you sell calves by the pound, you cannot help but notice Lot 79. He comes with best of breed predictions for pay-weight and ADG which are supported by his whopping WW, ADG, and YW ratios. Expect this bull to improve muscularity and Yield Grade.

80

SCHULER MATCHMAKER-3347

3/13/23 SOR : 3347
1A (100%) #4842190

WFL PROFITMAKER E7030

SCHULER MATCHMAKER 1974

SOR SHASTALADY HORIZON 5381C

5L BOURNE 117-48A

SOR LADY BOURNE 7829E

SOR LADY NK8148 0475X

act. BW	81
WW ratio	103
ADG ratio	89
YW ratio	96
IMF ratio	108
REA ratio	93
adj. SC	33.3
Frame	Mod-

ProS: 97 / 38%					HerdBuilder: 72 / 14%					GridMaster: 26 / 76%		
CED	BW	WW	ADG	YW	MLK	HPG	CEM	STY	MRB	YG	REA	
12	-3.0	74	.24	113	32	17	5	16	.49	.09	.09	
63%	29%	10%	40%	19%	6%	2%	88%	33%	34%	62%	62%	
Docility: 3					AoD: 6		dMPPA: 103			dam's CIV: \$46.98		

81

SCHULER MATCHMAKER-L029

3/9/23 SOR : L029
1B (99.7%) #4842776

WFL PROFITMAKER E7030

SCHULER MATCHMAKER 1974

SOR SHASTALADY HORIZON 5381C

SCHULER AMPLIFY 6206D

SOR BRASKA AMPLIFY F956

SOR BRASKA HN W499 Y723

act. BW	74
WW ratio	102
ADG ratio	110
YW ratio	107
IMF ratio	116
REA ratio	97
adj. SC	38.2
Frame	Mod

ProS: 80 / 66%					HerdBuilder: 51 / 51%					GridMaster: 29 / 69%		
CED	BW	WW	ADG	YW	MLK	HPG	CEM	STY	MRB	YG	REA	
12	-3.5	71	.25	111	33	13	5	16	.48	.01	.12	
59%	21%	16%	34%	22%	5%	27%	88%	33%	36%	21%	54%	
Docility: 2					AoD: 5		dMPPA: 102			dam's CIV: \$59.61		

This Matchmaker son gained value with each trip across the scale. Check out his positive ratios for weaning, ADG, yearling and IMF.



David and Stephanie after breeding a couple hundred cows in June 2022

82

SCHULER MATCHMAKER-3304

2/17/23 SOR : 3304
1B (99.9%) #4842112

WFL PROFITMAKER E7030

SCHULER MATCHMAKER 1974

SOR SHASTALADY HORIZON 5381C

SCHULER DISCIPLINE 8506F

SOR RUTH DISCIPLINE-1274

SOR RUTH GOOD TIME 6728D

act. BW	74
WW ratio	107
ADG ratio	97
YW ratio	103
IMF ratio	117
REA ratio	104
adj. SC	34.0
Frame	Sml+

ProS: 97 / 38%					HerdBuilder: 68 / 19%					GridMaster: 29 / 70%		
CED	BW	WW	ADG	YW	MLK	HPG	CEM	STY	MRB	YG	REA	
10	-.8	75	.26	117	35	15	6	17	.45	.04	.13	
83%	71%	8%	28%	13%	1%	7%	81%	22%	42%	35%	51%	
Docility: 1					AoD: 2		dMPPA: 103			dam's CIV: 2-Yr-Old		

83

SCHULER DISCIPLINE-1965-L133

4/5/23 SOR : L133
1B (99.5%) #4842984

SCHULER DISCIPLINE 8506F

SCHULER DISCIPLINE-1965

SOR MNRVNO DEFENDER 5344C

SCHULER CONFIDENCE C810

SOR BRASKA CONFIDENCE E206

SOR BRASKA REBEL C144

act. BW	75
WW ratio	96
ADG ratio	94
YW ratio	95
IMF ratio	130
REA ratio	86
adj. SC	35.0
Frame	Mod-

ProS: 79 / 68%				HerdBuilder: 55 / 43%				GridMaster: 25 / 78%			
CED	BW	WW	ADG	YW	MLK	HPG	CEM	STY	MRB	YG	REA
15	-3.4	70	.25	110	27	14	6	16	.43	.12	-.08
23%	23%	17%	37%	24%	40%	13%	69%	35%	47%	76%	91%
Docility: 2		AoD: 6		dMPPA: 95		dam's CIV: \$43.39					

84

SCHULER GAIN N GRADE-L045

3/13/23 SOR : L045
1B (99%) #4842808

SCHULER RANCH HAND F606

SCHULER GAIN N GRADE J876

SOR BRASKA DOMAIN F953

BECKTON EPIC R397 K

SOR BRASKA EPIC B621

SOR BRASKA ENVY W630

act. BW	83
WW ratio	103
ADG ratio	98
YW ratio	101
IMF ratio	55
REA ratio	109
adj. SC	34.8
Frame	Mod

ProS: 111 / 19%				HerdBuilder: 77 / 10%				GridMaster: 34 / 59%			
CED	BW	WW	ADG	YW	MLK	HPG	CEM	STY	MRB	YG	REA
15	-2.3	72	.30	121	29	15	7	18	.33	.08	.21
26%	42%	13%	8%	10%	22%	5%	60%	12%	72%	60%	34%
Docility: 1		AoD: 9		dMPPA: 103		dam's CIV: \$49.85					

85

SCHULER GAIN N GRADE-3364

3/17/23 SOR : 3364
1B (99.4%) #4842224

SCHULER RANCH HAND F606

SCHULER GAIN N GRADE J876

SOR BRASKA DOMAIN F953

SCHULER ENDURANCE 6224D

SOR MARLEE END-6224D 8117F

SOR MARLEE ENVOY 6604D

act. BW	98
WW ratio	115
ADG ratio	97
YW ratio	106
IMF ratio	81
REA ratio	107
adj. SC	36.9
Frame	Mod

ProS: 105 / 27%				HerdBuilder: 76 / 10%				GridMaster: 28 / 71%			
CED	BW	WW	ADG	YW	MLK	HPG	CEM	STY	MRB	YG	REA
13	-.6	79	.33	132	34	12	6	19	.29	.07	.15
50%	74%	4%	3%	3%	3%	42%	70%	5%	81%	54%	47%
Docility: 1		AoD: 5		dMPPA: 108		dam's CIV: \$49.81					



Lot 85 - SCHULER GAIN N GRADE-3364

Lots 85-86 are half-brothers by Gain N Grade that pack a lot of performance into a moderate frame. These two bulls average best 4% for yearling and best 6% for ADG. Better yet, both are out of high producing females that have exhibited excellent fertility as indicated by their dams' high CIVs (Calving Ease Values).

86

SCHULER GAIN N GRADE-L073

3/19/23 SOR : L073
1B (99.3%) #4842864

SCHULER RANCH HAND F606

SCHULER GAIN N GRADE J876

SOR BRASKA DOMAIN F953

5L TOPGUN 560-65B

SOR BRASKA TOPGUN-G338

SOR BRASKA BOURNE E222

act. BW	87
WW ratio	108
ADG ratio	99
YW ratio	104
IMF ratio	129
REA ratio	98
adj. SC	35.5
Frame	Mod-

ProS: 102 / 31%				HerdBuilder: 63 / 27%				GridMaster: 39 / 49%			
CED	BW	WW	ADG	YW	MLK	HPG	CEM	STY	MRB	YG	REA
13	-1.0	81	.30	130	28	18	6	15	.47	.07	.17
48%	67%	2%	8%	4%	27%	1%	78%	42%	38%	50%	43%
Docility: 1		AoD: 4		dMPPA: 105		dam's CIV: \$43.37					

87

SCHULER GAIN N GRADE-L129

4/4/23 SOR : L129
1B (99%) #4842976

SCHULER RANCH HAND F606

SCHULER GAIN N GRADE J876

SOR BRASKA DOMAIN F953

SCHULER REBEL 0029X

SOR BRASKA REBEL F972

SOR BRASKA HIGH NOON Y818

act. BW	80
WW ratio	101
ADG ratio	85
YW ratio	93
IMF ratio	85
REA ratio	97
adj. SC	34.5
Frame	Mod-

ProS: 107 / 24%				HerdBuilder: 78 / 9%				GridMaster: 29 / 70%			
CED	BW	WW	ADG	YW	MLK	HPG	CEM	STY	MRB	YG	REA
15	-2.4	76	.30	124	28	13	7	18	.37	.15	.01
17%	40%	7%	10%	7%	35%	20%	49%	9%	63%	89%	77%
Docility: 1		AoD: 5		dMPPA: 102		dam's CIV: (\$44.04)					

SCHULER RED ANGUS



Lot 89 -SCHULER CORNERSTONE-L038



SCHULER CORNERSTONE-L077

3/19/23 SOR : L077
1B (99.5%) #4842872

5L GENUINE 1603-195C

WEDEL CORNERSTONE 0224H

WFL FRANKLY F8193

SCHULER FLAT IRON 5204R

SOR BRASKA FLAT IRON Y743

SOR BRASKA LR N581

act. BW	82
WW ratio	107
ADG ratio	109
YW ratio	108
IMF ratio	74
REA ratio	116
adj. SC	35.0
Frame	Mod

ProS: 94 / 43%				HerdBuilder: 55 / 41%				GridMaster: 39 / 49%			
CED	BW	WW	ADG	YW	MLK	HPG	CEM	STY	MRB	YG	REA
17	-3.2	75	.25	115	29	12	10	14	.37	-.17	.47
6%	26%	9%	34%	16%	22%	34%	4%	59%	63%	1%	5%
Docility: 1		AoD: 12		dMPPA: 102		dam's CIV: \$13.65					

This bull's 12-year-old dam is still getting it done! She set Lot 90 up for success with a 107 WW ratio. She has weaned 11 calves over her productive 12 year life-span with a 367-day calving interval. .



SCHULER CORNERSTONE-L121

3/29/23 SOR : L121
1B (99.9%) #4842960

5L GENUINE 1603-195C

WEDEL CORNERSTONE 0224H

WFL FRANKLY F8193

5L TOP FLIGHT 3010-491A

SOR BRASKA TOP FLIGHT D576

SOR BRASKA NB0050X Z411

act. BW	78
WW ratio	101
ADG ratio	86
YW ratio	94
IMF ratio	113
REA ratio	98
adj. SC	37.3
Frame	Mod-

ProS: 106 / 25%				HerdBuilder: 60 / 32%				GridMaster: 46 / 33%			
CED	BW	WW	ADG	YW	MLK	HPG	CEM	STY	MRB	YG	REA
16	-3.9	70	.25	111	31	15	11	13	.59	.00	.22
11%	16%	19%	32%	23%	10%	9%	2%	71%	19%	18%	32%
Docility: 1		AoD: 7		dMPPA: 102		dam's CIV: \$8.84					

This Cornerstone son has suitable calving ease to be used on heifers, but also comes with plenty of growth, carcass, and cow herd building traits to continue his career in the cow herd once he outgrows the heifers.



SCHULER CORNERSTONE-L038

3/1/23 SOR : L038
1B (99.8%) #4842794

5L GENUINE 1603-195C

WEDEL CORNERSTONE 0224H

WFL FRANKLY F8193

5L DEFENDER 560-30Z

SOR BRASKA DEFENDER C153

SOR BRASKA NK7335 W705

act. BW	78
WW ratio	95
ADG ratio	97
YW ratio	96
IMF ratio	83
REA ratio	101
adj. SC	36.4
Frame	Mod-

ProS: 64 / 87%				HerdBuilder: 23 / 94%				GridMaster: 42 / 43%			
CED	BW	WW	ADG	YW	MLK	HPG	CEM	STY	MRB	YG	REA
17	-4.6	62	.23	98	33	11	9	10	.65	-.12	.23
9%	9%	48%	51%	50%	3%	48%	11%	91%	12%	2%	30%
Docility:		AoD: 8		dMPPA: 107		dam's CIV: \$19.72					

A deep-ribbed, calving ease specialist by Cornerstone whose high producing dam weaned her 7th calf two-weeks prior to her 8th birthday.



SCHULER TRANSPORTER-L039

3/12/23 SOR : L039
1B (99.4%) #4842796

5L BOURNE 117-48A

5L TRANSPORTER 4916-25F

5L ROSE 4104-4916

SCHULER RANCH HAND F606

SOR BRASKA RANCH HAND H743

SOR BRASKA STRATEGY C164

act. BW	81
WW ratio	98
ADG ratio	111
YW ratio	105
IMF ratio	99
REA ratio	96
adj. SC	36.8
Frame	Mod

ProS: 107 / 24%				HerdBuilder: 67 / 21%				GridMaster: 40 / 46%			
CED	BW	WW	ADG	YW	MLK	HPG	CEM	STY	MRB	YG	REA
14	-3.2	70	.28	115	20	16	5	17	.56	.11	.08
32%	26%	19%	17%	17%	91%	4%	85%	25%	22%	73%	63%
Docility: 1		AoD: 3		dMPPA: 99		dam's CIV: \$39.32					



SCHULER TRANSPORTER-L003

2/18/23 SOR : L003
1B (99.9%) #4842724

5L BOURNE 117-48A

5L TRANSPORTER 4916-25F

5L ROSE 4104-4916

LSF SRR PRESIDENT 8177F

SOR BRASKA PRESIDENT-J624

SOR BRASKA ORACLE-G399

act. BW	60
WW ratio	99
ADG ratio	96
YW ratio	98
IMF ratio	109
REA ratio	99
adj. SC	33.5
Frame	Mod-

ProS: 136 / 3%				HerdBuilder: 75 / 11%				GridMaster: 61 / 11%			
CED	BW	WW	ADG	YW	MLK	HPG	CEM	STY	MRB	YG	REA
15	-3.3	76	.26	117	25	13	8	17	.79	.04	.28
23%	24%	7%	30%	13%	61%	21%	35%	22%	4%	35%	22%
Docility: 3		AoD: 2		dMPPA: 100		dam's CIV: 2-Yr-Old					



SCHULER TRANSPORTER-3414

4/4/23 SOR : 3414
1A (100%) #4842324

5L BOURNE 117-48A

5L TRANSPORTER 4916-25F

5L ROSE 4104-4916

BROWN ORACLE B112

SOR BETH ORACLE-9538

SOR BETH DD1171Y 3972A

act. BW	78
WW ratio	101
ADG ratio	97
YW ratio	99
IMF ratio	112
REA ratio	95
adj. SC	37.0
Frame	Mod

ProS: 123 / 9%				HerdBuilder: 70 / 17%				GridMaster: 53 / 22%			
CED	BW	WW	ADG	YW	MLK	HPG	CEM	STY	MRB	YG	REA
16	-4.1	73	.27	117	25	13	8	17	.65	.11	.09
9%	14%	11%	21%	14%	61%	23%	28%	25%	12%	74%	62%
Docility: 1		AoD: 4		dMPPA: 102		dam's CIV: (\$22.89)					



SCHULER TRNSPRTR-J862-3412

4/5/23 SOR : 3412
1B (98.7%) #4842320

5L TRANSPORTER 4916-25F

SCHULER TRANSPORTER-J862

SOR BRASKA AMPLIFY F974

SCHULER EDGE 5502C

SOR RUTH EDGE 7867E

SOR RUTH OMGDNSS 4253B

act. BW	85
WW ratio	106
ADG ratio	97
YW ratio	102
IMF ratio	91
REA ratio	100
adj. SC	36.5
Frame	Mod-

ProS: 111 / 19%				HerdBuilder: 63 / 28%				GridMaster: 49 / 29%			
CED	BW	WW	ADG	YW	MLK	HPG	CEM	STY	MRB	YG	REA
11	-.8	76	.29	122	24	14	5	16	.58	.01	.23
77%	71%	7%	13%	8%	66%	13%	91%	30%	20%	23%	30%
Docility: 1		AoD: 6		dMPPA: 100		dam's CIV: \$30.33					



SCHULER KING ARTHUR-3361

3/16/23 SOR : 3361
1B (99.9%) #4842218

WFL MERLIN 018A

LSF SRR KING ARTHUR 0136H

LSF SRR RAINDANC A3335 D6211

SCHULER BOURNE-E601

SOR ANKIE BOURNE-E601-9566

SOR ANKIE ENVY 2624Z

act. BW	95
WW ratio	114
ADG ratio	108
YW ratio	111
IMF ratio	113
REA ratio	96
adj. SC	36.4
Frame	Mod+

ProS: 85 / 59%				HerdBuilder: 48 / 56%				GridMaster: 36 / 54%			
CED	BW	WW	ADG	YW	MLK	HPG	CEM	STY	MRB	YG	REA
11	.0	91	.34	146	30	12	6	14	.50	.05	.21
77%	83%	1%	2%	1%	16%	33%	66%	60%	32%	43%	34%
Docility: 1		AoD: 4		dMPPA: 108		dam's CIV: \$41.46					

Better study this catalog to the very last bull. Here we are 95 lots deep and we find one of the top performers in the entire offering, with 1% ranks for both weaning and yearling.



1965

Darrell Schuler installed one of the first center-pivot irrigation systems in Morrill County and began raising corn and alfalfa to supplement the ranch's livestock.

Darrell Schuler with Butch on the pivot that year.

SCHULER RED ANGUS



Videoring the Commercial Bred Heifers we offer for sale every fall.

96

SCHULER COMBO-J870-L126

3/31/23 SOR : L126
1B (99%) #4842970

SCHULER COMBO G047

SCHULER COMBO-J870

SOR BRASKA DD B679

SCHULER RANCH HAND F606

SOR BRASKA RANCH HAND H766

A036

act. BW	71
WW ratio	102
ADG ratio	114
YW ratio	109
IMF ratio	101
REA ratio	106
adj. SC	36.4
Frame	Mod

ProS: 107 / 24%				HerdBuilder: 80 / 7%				GridMaster: 27 / 74%			
CED	BW	WW	ADG	YW	MLK	HPG	CEM	STY	MRB	YG	REA
16	-4.0	76	.30	124	31	14	8	18	.29	.11	.20
11%	15%	7%	8%	7%	13%	15%	26%	10%	81%	73%	36%
Docility: 3			AoD: 3			dMPPA: 103			dam's CIV: \$7.37		

97

SCHULER COURIER-3427

3/29/23 SOR : 3427
1B (99.9%) #4842350

5L TRANSPORTER 4916-25F

SCHULER COURIER J859

SOR BRASKA AMPLIFY F987

5L TOP FLIGHT 3010-491A

SOR MARLEE TOP FLIGHT 6727D

SOR MARLEE CMMTMNT 0470X

act. BW	86
WW ratio	101
ADG ratio	83
YW ratio	92
IMF ratio	86
REA ratio	90
adj. SC	37.3
Frame	Mod

ProS: 125 / 8%				HerdBuilder: 80 / 7%				GridMaster: 44 / 37%			
CED	BW	WW	ADG	YW	MLK	HPG	CEM	STY	MRB	YG	REA
13	-1.8	72	.25	112	25	15	7	18	.56	.04	.10
47%	51%	14%	35%	21%	61%	6%	60%	11%	22%	34%	58%
Docility: 1			AoD: 7			dMPPA: 103			dam's CIV: \$29.12		

Lot 97 is scurred.

98

SCHULER GAIN N GRADE-3384

3/19/23 SOR : 3384
1B (99.4%) #4842264

SCHULER RANCH HAND F606

SCHULER GAIN N GRADE J876

SOR BRASKA DOMAIN F953

SCHULER TOP FLIGHT 6233D

SOR MNERVO TFLYT-6233D 8220F

SOR MINERVO NVUS 4262B

act. BW	88
WW ratio	113
ADG ratio	107
YW ratio	110
IMF ratio	93
REA ratio	89
adj. SC	41.0
Frame	Mod

ProS: 117 / 13%				HerdBuilder: 84 / 5%				GridMaster: 33 / 61%			
CED	BW	WW	ADG	YW	MLK	HPG	CEM	STY	MRB	YG	REA
13	-1.4	82	.30	131	29	16	7	18	.43	.10	.18
42%	60%	2%	8%	3%	26%	4%	51%	10%	47%	69%	41%
Docility: 1			AoD: 5			dMPPA: 102			dam's CIV: \$35.51		

99

SCHULER GAIN N GRADE-3335

3/10/23 SOR : 3335
1B (99.4%) #4842166

SCHULER RANCH HAND F606

SCHULER GAIN N GRADE J876

SOR BRASKA DOMAIN F953

5L TRANSPORTER 4916-25F

SOR BELL TRANSPORTER 0074

SOR BELL AMPLIFY 8180F

act. BW	89
WW ratio	106
ADG ratio	107
YW ratio	107
IMF ratio	78
REA ratio	106
adj. SC	32.7
Frame	Mod

ProS: 111 / 19%				HerdBuilder: 65 / 24%				GridMaster: 46 / 33%			
CED	BW	WW	ADG	YW	MLK	HPG	CEM	STY	MRB	YG	REA
12	-.3	84	.34	138	27	15	4	18	.50	.07	.22
60%	79%	1%	2%	1%	38%	7%	93%	10%	32%	54%	32%
Docility: 1			AoD: 3			dMPPA: 105			dam's CIV: \$38.26		

100

SCHULER GAIN N GRADE-L036

3/11/23 SOR : L036
1B (95.6%) #4842790

SCHULER RANCH HAND F606

SCHULER GAIN N GRADE J876

SOR BRASKA DOMAIN F953

SCHULER RED 71 AMPED D303

SOR BRASKA AMPED H703

SOR BRASKA REBEL F995

act. BW	80
WW ratio	109
ADG ratio	105
YW ratio	107
IMF ratio	86
REA ratio	107
adj. SC	37.2
Frame	Mod

ProS: 79 / 68%				HerdBuilder: 52 / 48%				GridMaster: 27 / 74%			
CED	BW	WW	ADG	YW	MLK	HPG	CEM	STY	MRB	YG	REA
15	-2.2	79	.32	130	30	13	5	16	.32	.07	.15
25%	44%	4%	5%	3%	15%	17%	87%	35%	74%	49%	47%
Docility: 1			AoD: 3			dMPPA: 105			dam's CIV: \$46.22		

The Gain N Grade sons that sell as Lots 98, 99, and 100 average Top 2% for weaning and yearling, Top 5% for ADG, and are all backed up with superior pay-weights as indicated by their positive weaning, yearling, and gain ratios.

101

SCHULER PRESIDENT-1906-L140

4/7/23 SOR : L140
1B (99%) #4842998

LSF SRR PRESIDENT 8177F

SCHULER PRESIDENT-1906

SOR GARNET AMPLIFY-9625

SCHULER AMPLIFY 6206D

SOR BRASKA AMPLIFY-G363

SOR BRASKA FI T612

act. BW	77
WW ratio	103
ADG ratio	93
YW ratio	98
IMF ratio	95
REA ratio	110
adj. SC	34.6
Frame	Mod-

ProS: 107 / 24%				HerdBuilder: 64 / 26%				GridMaster: 43 / 40%			
CED	BW	WW	ADG	YW	MLK	HPG	CEM	STY	MRB	YG	REA
14	-4.0	70	.25	110	30	10	6	17	.46	-.05	.27
38%	15%	17%	36%	24%	14%	76%	81%	23%	40%	8%	23%
Docility: 3		AoD: 4		dMPPA: 104		dam's CIV: (\$1.84)					

102

SCHULER CORNERSTONE-3355

3/14/23 SOR : 3355
1A (100%) #4842206

5L GENUINE 1603-195C

WEDEL CORNERSTONE 0224H

WFL FRANKLY F8193

SCHULER ENDURANCE 2101Z

SOR FIREFLY ENDURANCE 5349C

SOR FIREFLY ROMERO 1507Y

act. BW	92
WW ratio	99
ADG ratio	93
YW ratio	96
IMF ratio	83
REA ratio	103
adj. SC	36.3
Frame	Mod-

ProS: 105 / 27%				HerdBuilder: 55 / 43%				GridMaster: 50 / 26%			
CED	BW	WW	ADG	YW	MLK	HPG	CEM	STY	MRB	YG	REA
13	-1.6	73	.30	121	26	14	8	14	.59	-.05	.20
41%	56%	11%	10%	10%	51%	14%	23%	60%	19%	7%	36%
Docility: 1		AoD: 8		dMPPA: 96		dam's CIV: \$47.74					

103

SCHULER KING ARTHUR-3437

3/27/23 SOR : 3437
1B (99.9%) #4842370

WFL MERLIN 018A

LSF SRR KING ARTHUR 0136H

LSF SRR RAINDANC A3335 D6211

5L DEFENDER 560-30Z

SOR RUBY DEFENDER 6714D

JAG RUBY 422B

act. BW	88
WW ratio	114
ADG ratio	102
YW ratio	108
IMF ratio	92
REA ratio	101
adj. SC	36.2
Frame	Mod

ProS: 59 / 91%				HerdBuilder: 18 / 96%				GridMaster: 41 / 44%			
CED	BW	WW	ADG	YW	MLK	HPG	CEM	STY	MRB	YG	REA
9	-.4	91	.33	144	30	10	3	12	.61	-.08	.35
89%	78%	1%	3%	1%	19%	67%	98%	84%	16%	4%	13%
Docility: 2		AoD: 7		dMPPA: 105		dam's CIV: \$14.17					

104

SCHULER TRANSPORTER-L044

3/13/23 SOR : L044
1B (99.9%) #4842806

5L BOURNE 117-48A

5L TRANSPORTER 4916-25F

5L ROSE 4104-4916

5L POSTMAN 5631-543A

SOR BRASKA POSTMAN D464

SOR BRASKA REBEL A007

act. BW	64
WW ratio	98
ADG ratio	82
YW ratio	91
IMF ratio	103
REA ratio	99
adj. SC	39.8
Frame	Mod

ProS: 129 / 6%				HerdBuilder: 73 / 13%				GridMaster: 56 / 18%			
CED	BW	WW	ADG	YW	MLK	HPG	CEM	STY	MRB	YG	REA
18	-5.4	64	.28	109	22	16	9	17	.70	.15	.00
3%	4%	39%	17%	27%	81%	4%	11%	18%	9%	89%	79%
Docility: 1		AoD: 7		dMPPA: 100		dam's CIV: \$43.52					

Lot 104 is a strong choice for heifers - both if you are breeding them or keeping them for replacements. He comes with outstanding predictions for lower birth weight and calving ease. He is equally strong for heifer pregnancy, maternal calving ease and his dam comes with an excellent CIV, indicating her longevity and fertility.

105

SCHULER TRANSPORTER-L069

3/18/23 SOR : L069
1B (99.8%) #4842856

5L BOURNE 117-48A

5L TRANSPORTER 4916-25F

5L ROSE 4104-4916

BROWN ORACLE B112

SOR BRASKA ORACLE E266

SOR BRASKA FLAT IRON X385

act. BW	89
WW ratio	104
ADG ratio	88
YW ratio	96
IMF ratio	107
REA ratio	102
adj. SC	31.9
Frame	Mod-

ProS: 121 / 10%				HerdBuilder: 64 / 26%				GridMaster: 57 / 16%			
CED	BW	WW	ADG	YW	MLK	HPG	CEM	STY	MRB	YG	REA
13	-1.6	77	.27	120	21	15	6	16	.73	.08	.16
45%	56%	6%	23%	10%	88%	8%	81%	29%	7%	59%	45%
Docility: 1		AoD: 6		dMPPA: 97		dam's CIV: \$46.58					



Please join us sale day!

SCHULER RED ANGUS

106 **SCHULER TRANSPORTER-3449**
 3/25/23 SOR : 3449
 1A (100%) #4842394

5L BOURNE 117-48A
5L TRANSPORTER 4916-25F
 5L ROSE 4104-4916
 BIEBER REAL MCCOY Y124
SOR RUTH R MCCOY 5369C
 SOR RUTH REAL DEAL 1550Y

act. BW	83
WW ratio	96
ADG ratio	92
YW ratio	95
IMF ratio	84
REA ratio	86
adj. SC	32.2
Frame	Mod

ProS: 108 / 22%			HerdBuilder: 61 / 30%			GridMaster: 47 / 32%					
CED	BW	WW	ADG	YW	MLK	HPG	CEM	STY	MRB	YG	REA
13	-2.1	70	.27	113	23	16	7	15	.61	.06	.12
50%	45%	20%	23%	20%	75%	3%	45%	53%	16%	45%	54%
Docility: 2			AoD: 8			dMPPA: 104			dam's CIV: \$14.22		

107 **SCHULER TRANSPORTER-3346**
 3/13/23 SOR : 3346
 1A (100%) #4842188

5L BOURNE 117-48A
5L TRANSPORTER 4916-25F
 5L ROSE 4104-4916
 SCHULER ENVY 7342T
SOR RUFV ENVY 2633Z
 SOR RUFV GCAN 2087M

act. BW	84
WW ratio	103
ADG ratio	89
YW ratio	97
IMF ratio	104
REA ratio	89
adj. SC	36.3
Frame	Mod

ProS: 117 / 14%			HerdBuilder: 66 / 23%			GridMaster: 51 / 25%					
CED	BW	WW	ADG	YW	MLK	HPG	CEM	STY	MRB	YG	REA
13	-2.0	69	.25	109	23	11	6	18	.68	.02	.24
53%	48%	22%	35%	26%	73%	62%	74%	15%	10%	26%	29%
Docility: 1			AoD: 11			dMPPA: 100			dam's CIV: \$45.16		

Here is a moderate framed, big-nutted Transporter son that was raised by an 11-year-old Envy cow that has not done any wrong since we have known her.

108 **SCHULER MATCHMAKER-L052**
 3/15/23 SOR : L052
 1B (99.9%) #4842822

WFL PROFITMAKER E7030
SCHULER MATCHMAKER 1974
 SOR SHASTALADY HORIZON 5381C
 SCHULER DYNASTY 4803B
SOR BRASKA DYNASTY E345
 SOR BRASKA NOON U349

act. BW	90
WW ratio	103
ADG ratio	89
YW ratio	96
IMF ratio	119
REA ratio	101
adj. SC	32.8
Frame	Mod

ProS: 87 / 55%			HerdBuilder: 59 / 34%			GridMaster: 28 / 72%					
CED	BW	WW	ADG	YW	MLK	HPG	CEM	STY	MRB	YG	REA
11	-1.8	73	.25	113	31	10	5	17	.49	.01	.16
80%	51%	12%	33%	19%	12%	76%	87%	19%	34%	20%	45%
Docility: 1			AoD: 6			dMPPA: 102			dam's CIV: \$11.11		

109 **SCHULER MATCHMAKER-L051**
 3/15/23 SOR : L051
 1B (99.3%) #4842820

WFL PROFITMAKER E7030
SCHULER MATCHMAKER 1974
 SOR SHASTALADY HORIZON 5381C
 SCHULER AMPLIFY 6206D
SOR BRASKA AMPLIFY-G390
 SOR BRASKA UTAH Z495

act. BW	82
WW ratio	95
ADG ratio	103
YW ratio	99
IMF ratio	123
REA ratio	91
adj. SC	32.8
Frame	Mod

ProS: 85 / 59%			HerdBuilder: 61 / 30%			GridMaster: 24 / 79%					
CED	BW	WW	ADG	YW	MLK	HPG	CEM	STY	MRB	YG	REA
11	-2.4	66	.23	104	33	13	5	16	.50	.04	.00
73%	40%	30%	48%	38%	4%	28%	89%	30%	32%	34%	79%
Docility: 1			AoD: 4			dMPPA: 101			dam's CIV: \$47.80		

Lot 108 and 109 are a pair of nice Matchmaker sons that are a pretty good match.

110 **SCHULER ENERGIZE-3349**
 3/13/23 SOR : 3349
 1A (100%) #4842194

BIEBER CL ATOMIC C218
BIEBER CL ENERGIZE F121
 BIEBER CL ADELLE 575D
 5L TRANSPORTER 4916-25F
SOR GARNET TRANSPORTER 0128
 SOR GARNET OMGDNSS 4211B

act. BW	99
WW ratio	109
ADG ratio	91
YW ratio	100
IMF ratio	114
REA ratio	98
adj. SC	33.3
Frame	Mod

ProS: 113 / 17%			HerdBuilder: 52 / 48%			GridMaster: 60 / 12%					
CED	BW	WW	ADG	YW	MLK	HPG	CEM	STY	MRB	YG	REA
12	-1.0	79	.34	132	26	15	6	15	.56	.05	.32
56%	67%	4%	2%	3%	46%	5%	81%	46%	22%	38%	16%
Docility: 1			AoD: 3			dMPPA: 102			dam's CIV: \$40.80		

111 **SCHULER COMBO-J794-3382**
 3/19/23 SOR : 3382
 1B (99.3%) #4842260

SCHULER COMBO G047
SCHULER COMBO-J794
 SOR BRASKA EPIC B656
 SCHULER TOP HAND D911
SOR ISOMI TOP HAND 0084
 SOR ISOMI BOURNE 7838E

act. BW	84
WW ratio	101
ADG ratio	114
YW ratio	108
IMF ratio	110
REA ratio	84
adj. SC	39.5
Frame	Mod

ProS: 104 / 27%			HerdBuilder: 60 / 33%			GridMaster: 45 / 36%					
CED	BW	WW	ADG	YW	MLK	HPG	CEM	STY	MRB	YG	REA
11	-.2	81	.33	133	28	15	6	16	.46	.03	.25
72%	80%	2%	4%	2%	32%	6%	81%	33%	40%	27%	27%
Docility: 3			AoD: 3			dMPPA: 101			dam's CIV: \$2.19		

112

SCHULER DISCIPLINE-1965-3410

4/6/23 SOR : 3410
1B (99.9%) #4842316

SCHULER DISCIPLINE 8506F

SCHULER DISCIPLINE-1965

SOR MNRVNO DEFENDER 5344C

SCHULER ENDURANCE 2101Z

SOR GARNET END 6723D

SOR GARNET RTL 6185S

act. BW	88
WW ratio	99
ADG ratio	99
YW ratio	99
IMF ratio	108
REA ratio	89
adj. SC	36.6
Frame	Mod

ProS: 113 / 17%					HerdBuilder: 69 / 17%					GridMaster: 43 / 40%		
CED	BW	WW	ADG	YW	MLK	HPG	CEM	STY	MRB	YG	REA	
11	-.9	72	.31	122	27	12	6	19	.37	.02	.09	
70%	68%	13%	7%	9%	42%	38%	69%	5%	63%	24%	62%	
Docility: 2		AoD: 7		dMPPA: 97		dam's CIV: \$25.60						



Lot 112 -SCHULER DISCIPLINE-1965-3410

113

SCHULER DISCIPLINE-1977-3407

4/7/23 SOR : 3407
1B (99.9%) #4842310

SCHULER DISCIPLINE 8506F

SCHULER DISCIPLINE-1977

SOR GARNET DEF-5551C 7889E

SCHULER BOURNE-111C-7179E

SOR ANKIE BRN111C-7192E-9515

SOR ANKIE TOP FLGHT 7811E

act. BW	89
WW ratio	106
ADG ratio	105
YW ratio	106
IMF ratio	123
REA ratio	107
adj. SC	35.6
Frame	Mod

ProS: 122 / 10%					HerdBuilder: 78 / 9%					GridMaster: 44 / 38%		
CED	BW	WW	ADG	YW	MLK	HPG	CEM	STY	MRB	YG	REA	
10	.6	76	.30	124	31	16	5	18	.46	.05	.23	
87%	90%	7%	9%	7%	12%	3%	86%	12%	40%	38%	30%	
Docility: 1		AoD: 4		dMPPA: 104		dam's CIV: \$23.01						

114

SCHULER COMBO-J870-3443

3/25/23 SOR : 3443
1B (99.6%) #4842382

SCHULER COMBO G047

SCHULER COMBO-J870

SOR BRASKA DD B679

5L TRANSPORTER 4916-25F

SOR KITTY TRANSPORTER 0106

SOR KITTY FI 9210W

act. BW	91
WW ratio	106
ADG ratio	107
YW ratio	107
IMF ratio	103
REA ratio	91
adj. SC	36.7
Frame	Mod

ProS: 104 / 28%					HerdBuilder: 64 / 26%					GridMaster: 40 / 46%		
CED	BW	WW	ADG	YW	MLK	HPG	CEM	STY	MRB	YG	REA	
11	.0	88	.31	138	26	15	4	18	.38	.12	.18	
79%	83%	1%	6%	1%	50%	7%	93%	16%	59%	78%	41%	
Docility: 3		AoD: 3		dMPPA: 100		dam's CIV: \$16.82						

115

SCHULER MATCHMAKER-3378

3/19/23 SOR : 3378
1A (100%) #4842252

WFL PROFITMAKER E7030

SCHULER MATCHMAKER 1974

SOR SHASTALADY HORIZON 5381C

SCHULER AMPLIFY 6206D

SOR RUTH AMPLIFY 8184F

SOR RUTH OSCAR 0409X

act. BW	95
WW ratio	110
ADG ratio	93
YW ratio	102
IMF ratio	120
REA ratio	99
adj. SC	34.0
Frame	Mod

ProS: 94 / 44%					HerdBuilder: 58 / 37%					GridMaster: 36 / 55%		
CED	BW	WW	ADG	YW	MLK	HPG	CEM	STY	MRB	YG	REA	
9	-.3	79	.27	122	31	13	3	16	.55	.01	.15	
93%	79%	4%	24%	9%	9%	17%	98%	29%	24%	20%	47%	
Docility: 1		AoD: 5		dMPPA: 98		dam's CIV: \$10.50						

116

SCHULER MATCHMAKER-3342

3/12/23 SOR : 3342
1A (100%) #4842180

WFL PROFITMAKER E7030

SCHULER MATCHMAKER 1974

SOR SHASTALADY HORIZON 5381C

SCHULER DISCIPLINE 8506F

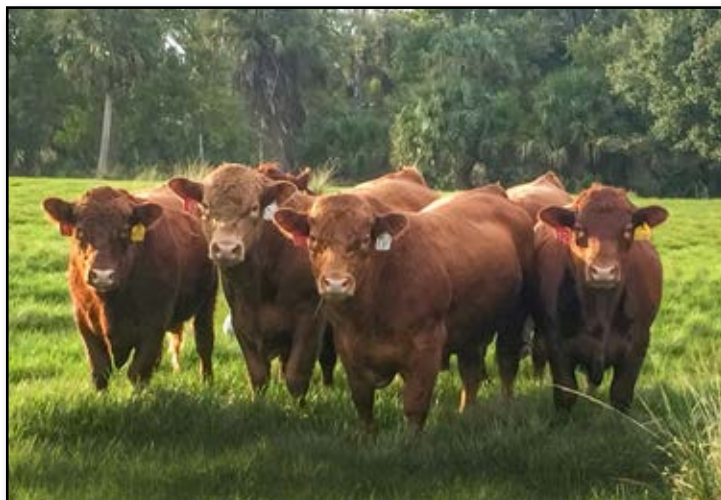
SOR MARLEE DISCIPLINE 0089

SOR MARLEE BOURNE 7896E

act. BW	87
WW ratio	104
ADG ratio	102
YW ratio	103
IMF ratio	110
REA ratio	95
adj. SC	36.3
Frame	Mod

ProS: 96 / 41%					HerdBuilder: 69 / 17%					GridMaster: 26 / 75%		
CED	BW	WW	ADG	YW	MLK	HPG	CEM	STY	MRB	YG	REA	
10	-1.2	70	.25	111	35	16	5	17	.44	.08	.06	
85%	64%	17%	35%	24%	1%	2%	89%	19%	45%	59%	67%	
Docility: 1		AoD: 3		dMPPA: 102		dam's CIV: \$45.72						

SCHULER RED ANGUS



Red Angus and Schuler Red Composite bulls after arriving in Florida at Kenansville Cattle Co. Alan Kelley graciously provided progeny of these bulls to be used in the working animal demonstrations at NCBA convention in Orlando this year.

117

SCHULER TRNSPRTR-J862-L128

4/3/23 SOR : L128
1B (98.6%) #4842974

5L TRANSPORTER 4916-25F

SCHULER TRANSPORTER-J862

SOR BRASKA AMPLIFY F974

3SCC DOMAIN A163

SOR BRASKA DOMAIN F993

SOR BRASKA NB0050X Z484

act. BW	99
WW ratio	97
ADG ratio	130
YW ratio	114
IMF ratio	91
REA ratio	104
adj. SC	36.5
Frame	Mod

ProS: 115 / 15%				HerdBuilder: 63 / 28%				GridMaster: 52 / 23%			
CED	BW	WW	ADG	YW	MLK	HPG	CEM	STY	MRB	YG	REA
10	-.1	69	.29	116	23	14	3	18	.57	.13	.03
84%	82%	22%	12%	16%	73%	9%	98%	14%	21%	84%	73%
Docility: 1				AoD: 5		dMPPA: 96		dam's CIV: \$37.84			

118

SCHULER COMBO-J794-3418

4/2/23 SOR : 3418
1B (99.4%) #4842332

SCHULER COMBO G047

SCHULER COMBO-J794

SOR BRASKA EPIC B656

5L TRANSPORTER 4916-25F

SOR RUTH TRANSPORTER 0146

SOR RUTH ENDURANCE 6743D

act. BW	86
WW ratio	105
ADG ratio	109
YW ratio	108
IMF ratio	113
REA ratio	88
adj. SC	37.4
Frame	Mod-

ProS: 119 / 11%				HerdBuilder: 57 / 39%				GridMaster: 62 / 10%			
CED	BW	WW	ADG	YW	MLK	HPG	CEM	STY	MRB	YG	REA
10	1.0	88	.34	143	27	13	5	17	.61	.12	.20
87%	93%	1%	2%	1%	37%	18%	86%	21%	16%	77%	36%
Docility: 1				AoD: 3		dMPPA: 98		dam's CIV: (\$33.10)			

119

SCHULER KING ARTHUR-L091

3/24/23 SOR : L091
1B (99.7%) #4842900

WFL MERLIN 018A

LSF SRR KING ARTHUR 0136H

LSF SRR RAINDANC A3335 D6211

SCHULER NEBULA P707 0050X

SOR BRASKA NB0050X B647

SOR BRASKA GM U305

act. BW	99
WW ratio	103
ADG ratio	115
YW ratio	110
IMF ratio	98
REA ratio	101
adj. SC	36.1
Frame	Mod+

ProS: 99 / 36%				HerdBuilder: 54 / 44%				GridMaster: 44 / 37%			
CED	BW	WW	ADG	YW	MLK	HPG	CEM	STY	MRB	YG	REA
10	-.1	84	.32	136	28	10	5	16	.47	.04	.21
86%	82%	1%	4%	2%	30%	70%	82%	34%	38%	37%	34%
Docility: 1				AoD: 9		dMPPA: 98		dam's CIV: \$28.03			

120

SCHULER MATCHMAKER-3305

2/18/23 SOR : 3305
1B (99.9%) #4842114

WFL PROFITMAKER E7030

SCHULER MATCHMAKER 1974

SOR SHASTALADY HORIZON 5381C

SCHULER TOP HAND D911

SOR MINERVNO TOP HAND-1978

SOR MINERVO NVUS 4262B

act. BW	75
WW ratio	110
ADG ratio	111
YW ratio	111
IMF ratio	99
REA ratio	101
adj. SC	36.5
Frame	Mod

ProS: 64 / 88%				HerdBuilder: 39 / 74%				GridMaster: 24 / 78%			
CED	BW	WW	ADG	YW	MLK	HPG	CEM	STY	MRB	YG	REA
6	-1.5	80	.28	125	32	16	-1	16	.43	.01	.13
99%	58%	3%	17%	6%	7%	2%	99%	31%	47%	21%	51%
Docility: 1				AoD: 2		dMPPA: 104		dam's CIV: 2-Yr-Old			

121

SCHULER MATCHMAKER-3417

4/2/23 SOR : 3417
1A (100%) #4842330

WFL PROFITMAKER E7030

SCHULER MATCHMAKER 1974

SOR SHASTALADY HORIZON 5381C

SCHULER NORSEMAN KING 8148U

SOR LADY NK8148 0475X

SOR LADY 1031 8511H

act. BW	93
WW ratio	100
ADG ratio	85
YW ratio	93
IMF ratio	74
REA ratio	94
adj. SC	36.4
Frame	Mod

ProS: 74 / 76%				HerdBuilder: 59 / 34%				GridMaster: 14 / 91%			
CED	BW	WW	ADG	YW	MLK	HPG	CEM	STY	MRB	YG	REA
9	-.5	72	.24	111	29	13	3	17	.36	.07	.03
91%	76%	13%	44%	23%	24%	21%	98%	23%	65%	52%	73%
Docility: 1				AoD: 13		dMPPA: 102		dam's CIV: \$11.44			

122

SCHULER COMBO-J880-L123

3/31/23 SOR : L123
1B (99.2%) #4842964

SCHULER COMBO G047

SCHULER COMBO-J880

SOR BRASKA DEFENDER D501

SCHULER DISCIPLINE 8506F

SOR BRASKA DISCIPLINE H768

SOR BRASKA DEF-57B E282

act. BW	98
WW ratio	107
ADG ratio	92
YW ratio	100
IMF ratio	116
REA ratio	101
adj. SC	37.4
Frame	Mod

ProS: 98 / 37%				HerdBuilder: 33 / 83%				GridMaster: 64 / 9%			
CED	BW	WW	ADG	YW	MLK	HPG	CEM	STY	MRB	YG	REA
7	2.9	84	.36	143	29	12	3	15	.52	.01	.41
98%	99%	1%	1%	1%	22%	37%	97%	44%	29%	21%	8%
Docility: 1		AoD: 3		dMPPA: 104		dam's CIV: (\$13.83)					

123

SCHULER MATCHMAKER-L060

3/16/23 SOR : L060
1B (98.3%) #4842838

WFL PROFITMAKER E7030

SCHULER MATCHMAKER 1974

SOR SHASTALADY HORIZON 5381C

SCHULER DISCIPLINE 8506F

SOR BRASKA DISCIPLINE H774

SOR BRASKA REBEL Z453

act. BW	86
WW ratio	98
ADG ratio	94
YW ratio	96
IMF ratio	86
REA ratio	92
adj. SC	33.9
Frame	Mod

ProS: 84 / 60%				HerdBuilder: 60 / 33%				GridMaster: 24 / 79%			
CED	BW	WW	ADG	YW	MLK	HPG	CEM	STY	MRB	YG	REA
11	-2.0	66	.25	106	34	16	5	15	.43	.12	-.02
76%	48%	32%	37%	33%	3%	4%	82%	41%	47%	78%	83%
Docility: 1		AoD: 3		dMPPA: 98		dam's CIV: \$25.99					

124

SCHULER GAIN N GRADE-3393

3/21/23 SOR : 3393
1B (99.4%) #4842282

SCHULER RANCH HAND F606

SCHULER GAIN N GRADE J876

SOR BRASKA DOMAIN F953

SCHULER DYNATREND 8144U

SOR GARNET DYNTRND 1555Y

SOR GARNET BC 7751T

act. BW	94
WW ratio	99
ADG ratio	97
YW ratio	98
IMF ratio	82
REA ratio	100
adj. SC	33.5
Frame	Mod-

ProS: 112 / 18%				HerdBuilder: 99 / 1%				GridMaster: 13 / 92%			
CED	BW	WW	ADG	YW	MLK	HPG	CEM	STY	MRB	YG	REA
15	-1.7	73	.26	115	26	14	7	21	.18	.06	.14
23%	54%	11%	31%	17%	52%	15%	47%	1%	96%	45%	49%
Docility: 1		AoD: 12		dMPPA: 98		dam's CIV: \$32.79					

125

SCHULER TRANSPORTER-L017

2/26/23 SOR : L017
1B (99.8%) #4842752

5L BOURNE 117-48A

5L TRANSPORTER 4916-25F

5L ROSE 4104-4916

SCHULER DISCIPLINE 8506F

SOR BRASKA DISCIPLINE-J556

SOR BRASKA ENDRANCE B605

act. BW	87
WW ratio	92
ADG ratio	102
YW ratio	97
IMF ratio	98
REA ratio	92
adj. SC	31.3
Frame	Mod-

ProS: 101 / 32%				HerdBuilder: 50 / 53%				GridMaster: 51 / 25%			
CED	BW	WW	ADG	YW	MLK	HPG	CEM	STY	MRB	YG	REA
6	-.3	70	.28	116	23	16	0	19	.57	.09	.11
99%	79%	18%	15%	16%	78%	3%	99%	8%	21%	65%	56%
Docility: 1		AoD: 2		dMPPA: 97		dam's CIV: 2-Yr-Old					

126

SCHULER DISCIPLINE-1965-L116

3/28/23 SOR : L116
1B (99.5%) #4842950

SCHULER DISCIPLINE 8506F

SCHULER DISCIPLINE-1965

SOR MNRVNO DEFENDER 5344C

BROWN ORACLE B112

SOR BRASKA ORACLE-G362

SOR BRASKA REBEL D447

act. BW	98
WW ratio	120
ADG ratio	107
YW ratio	114
IMF ratio	90
REA ratio	108
adj. SC	33.8
Frame	Mod+

ProS: 100 / 34%				HerdBuilder: 51 / 51%				GridMaster: 49 / 28%			
CED	BW	WW	ADG	YW	MLK	HPG	CEM	STY	MRB	YG	REA
10	1.0	91	.32	142	33	12	5	16	.53	.02	.32
86%	93%	1%	5%	1%	4%	45%	86%	35%	27%	26%	16%
Docility: 3		AoD: 4		dMPPA: 109		dam's CIV: \$10.88					



Low input cattle drive.

127

SCHULER COURIER-L138

4/7/23 SOR : L138
1B (99.9%) #4842994

5L TRANSPORTER 4916-25F

SCHULER COURIER J859

SOR BRASKA AMPLIFY F987

SCHULER EDGE-7155E

SOR BRASKA EDGE-7155E-G414

SOR BRASKA DBL DSGN Y707

act. BW	81
WW ratio	104
ADG ratio	91
YW ratio	98
IMF ratio	101
REA ratio	92
adj. SC	39.6
Frame	Mod

ProS: 105 / 27%					HerdBuilder: 82 / 6%				GridMaster: 23 / 81%			
CED	BW	WW	ADG	YW	MLK	HPG	CEM	STY	MRB	YG	REA	
13	-1.5	80	.25	121	23	16	6	18	.29	.03	.25	
51%	58%	3%	33%	10%	79%	3%	70%	11%	81%	30%	27%	
Docility: 2		AoD: 4		dMPPA: 98		dam's CIV: \$5.12						

128

SCHULER TOP HAND-J879-L146

4/9/23 SOR : L146
1B (99.8%) #4843010

SCHULER TOP HAND D911

SCHULER TOP HAND-J879

SOR BRASKA POSTMAN D560

3SCC DOMAIN A163

SOR BRASKA DOMAIN F979

SOR BRASKA ENDRANCE B678

act. BW	94
WW ratio	104
ADG ratio	102
YW ratio	104
IMF ratio	92
REA ratio	101
adj. SC	33.7
Frame	Mod

ProS: 117 / 13%					HerdBuilder: 69 / 18%				GridMaster: 48 / 31%			
CED	BW	WW	ADG	YW	MLK	HPG	CEM	STY	MRB	YG	REA	
12	.5	76	.32	128	23	14	4	19	.42	-.01	.33	
67%	89%	7%	4%	5%	72%	11%	96%	8%	49%	15%	15%	
Docility: 2		AoD: 5		dMPPA: 98		dam's CIV: \$12.81						



Lot 129 -SCHULER KING ARTHUR-L108

129

SCHULER KING ARTHUR-L108

3/23/23 SOR : L108
1B (99.8%) #4842934

WFL MERLIN 018A

LSF SRR KING ARTHUR O136H

LSF SRR RAINDANC A3335 D6211

SCHULER AMPLIFY 6206D

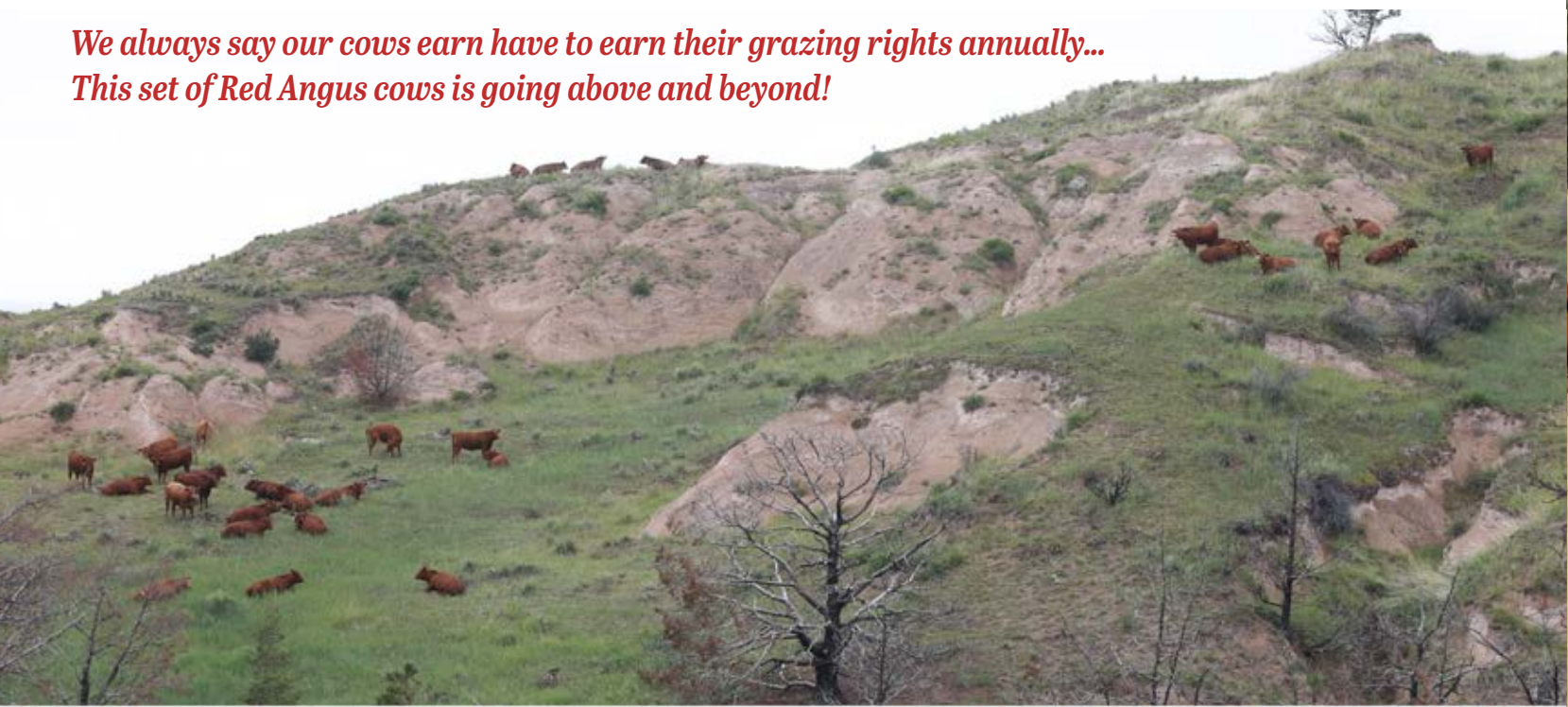
SOR BRASKA AMPLIFY F981

SOR BRASKA DBL DSGN B659

act. BW	103
WW ratio	119
ADG ratio	131
YW ratio	125
IMF ratio	84
REA ratio	117
adj. SC	36.6
Frame	Mod+

ProS: 72 / 78%					HerdBuilder: 37 / 78%				GridMaster: 36 / 56%			
CED	BW	WW	ADG	YW	MLK	HPG	CEM	STY	MRB	YG	REA	
9	.3	93	.35	149	29	12	4	14	.49	-.01	.25	
92%	86%	1%	1%	1%	20%	37%	97%	65%	34%	15%	27%	
Docility: 1		AoD: 5		dMPPA: 99		dam's CIV: \$23.43						

*We always say our cows earn have to earn their grazing rights annually...
This set of Red Angus cows is going above and beyond!*



Do Your Cows Fit the Ranch?

Cows must demonstrate fitness to their ranch environment annually. We tend to think of it as yes or no question. Is she bred or not? Did she wean a calf or not? This has served us well for many years and still gives us the opportunity to cull cows that are costing money rather than generating revenue.

However, with annual cow costs approaching \$1,000 per head for many producers, it seems logical to identify the more fertile cows and perpetuate those genetics rather than waiting to cull those that do not have the fitness and have already ran up the feed bill. We participated in the development of a phenotypic measure of a cow's reproductive efficiency enabled with the large progeny test herd with which we partner, other seedstock producers, and cattle data management specialists. This is not an EPD meant to be used across herds, but rather a tool to compare the reproductive fitness of cows within their respective herds.

The Calving Interval Value (CIV) represents differences in the annualized repeatability of each cow's average calving interval and the distribution of her calving dates versus the rest of the herd. Since this is a cow herd observation, the CIV of each bull's dam is shown on the bottom row of data in their sale lot template - beside the Age of Dam and Most Probable Producing Ability (MPPA) of the dam.

How CIV works: CIV looks at two components of a cow's annual reproduction; Most Probable Calving Interval (MPCI) and Calving Season Distribution (CSD). In simplistic terms, $CIV = MPCI + CSD$. The weightings are established by economics. Calves born earlier in the calving season are gaining weight sooner and are heavier at weaning. Cows with longer calving intervals have fewer calves over their lifespan, incur more feed cost, and are more likely to drop out of the herd due to lack of pregnancy before they can recapture their development expense.

Using CIV: The trait units for CIV are dollars (\$) and reflect differences in the economic value of the cows' MPCL and CIV. Those cows that maintain a MPCI close to herd average and have CSD values that reflect calves born earliest in the calving season will have the highest \$CIV. Those females that breed first service AI as heifers and every year after as cows will have the highest CIV. Also, a cow can have a relatively low (favorable) calving interval, but because her calves are consistently born later in the calving season, she will still have a less desirable \$CIV. Herds with tighter calving seasons will have less variation in CIV values, and herds (like Schuler Red Angus) which move later calving cows out of the herd will tend to have less variation in CIV values and cluster a large percentage of their herd between \$0 and \$50.



Our cows compete annually for their grazing rights...

Our CIV values are made more reliable because its component observations, **Calving Season Distribution** and **Most Probable Calving Interval**, are captured in large, equal opportunity contemporary groups.

Through the Years...

2014

Schuler Rebel 0026X becomes the first "1B" Red Angus bull leased and marketed by a major bull stud. He becomes the #1 Red Angus semen sales sire. Select Sires purchases Accelerated and takes over the Rebel lease. In 2021, Rebel became Select Sires' highest volume Red Angus sire in its history. Rebel retires and returns to ranch where he was born and lives out the rest of his long and productive life span. Many commercial herds were introduced to the Red Angus breed by this purebred 1B Red Angus bull who delivered reliable calving ease with superior growth, high quality grades, and daughters with exceptional maternal traits.

2011-2016

2011-2016 Participates in the National Beef Cattle Evaluation Consortium project to improve beef cattle efficiency through genotyping and development of an across-breed genomic selection program.

2010

The Schuler Family is recognized as the "Pioneer Breeder of the Year" by the Red Angus Association for their long-term commitment to maintaining the quality and excellence of their herd through diligent breeding practices.

2005

An August tornado destroys two major transmission lines and numerous trees in the Christensen pasture west of the ranch headquarters. Several neighboring center pivot machines are also destroyed.

2004

The Schuler Family is recognized by the Red Angus Association for being one of the "Breed's 50 Most Influential People".

1999

Participates in a field study with the University of Nebraska, Colorado State University, and XY Inc. to evaluate the effects of sexed sperm compared to normal sperm on AI conception rates. This study also determines the effects of semen deposition locations on conception rates and differences in bull fertility.

1996

Red Angus Association of America awards the "1996 Seedstock Breeder of the Year" to the Schuler family for their excellent standard of quality in breeding Red Angus cattle.

1993

The Red Angus Association of America becomes the 14th largest beef breed registrar in the USA

1991

Butch and Susan purchase the entire 163 head offering of Pat Vinton's red MARC II heifers through Leachman Cattle Company. These cattle become the foundation herd for the Schuler Red composite program.

1988

Darrell is honored as the recipient of the Distinguished Service award by the Red Angus Association of America.



Schuler Rebel 0029X

2009

Participates in the National Beef Cattle Evaluation Consortium's "Weight Trait Project". This project incorporates systematic collection of DNA and data to improve the accuracy of EPDs with marker data. It includes 25 cooperating beef operations, seven breed associations, industry affiliates and research groups including the Meat Animal Research Center, University of Nebraska, and University of California-Davis

2000

Participates in a Colorado State University trial to explore the potential of developing a live-animal predictor of maintenance energy requirements in beef cattle using ultrasonic measurements of the liver.

1999

RAAA Convention is held in Gering, Nebraska. Schuler Red Angus hosts two busloads of RAAA members and Red Angus enthusiasts from across North America at the ranch

1995

Schuler Red Angus participates in an ultrasound study with Colorado State University, Agriculture and Agri-Food Canada, and the Red Angus Association of America. Ultrasound scans of the ranch's sale bulls, replacement heifers, and sire-identified fed steer progeny are used to determine the heritability of loineye muscle area, backfat thickness and gray shading (marbling potential) and to identify product trait correlations between seedstock and finished cattle. This is a precursor to the ultrasound technology widely adapted by the beef cattle industry to predict progeny carcass traits of seedstock cattle.

1991

Schuler Red Angus begins structured performance and carcass evaluation of sire-identified progeny from the ranch's commercial cowherd and advocates for the development of EPDs to evaluate product traits objectively. Similar carcass evaluation projects with customers' commercial cowherds are initiated through the years including over 1700 randomized annual AI matings with the Blew Ranch in Kansas. This unbiased, comparative analysis of performance and product traits is the largest progeny test herd of its kind in North America.

2015

Stephanie's photo, "The Approach" is selected as the cover of ARA Magazine



The History of Schuler-Olsen Ranches, Inc. and Schuler Red Angus (cont. from page 6)

1870

On his way home from the gold fields in California, Henry Redington of Waddington, New York discovers "good ranching country" in western Nebraska. Redington is the namesake of the unincorporated village seven miles from the Schuler Ranch headquarters. He establishes his headquarters three miles south of Lawrence Fork's junction with Pumpkin Creek near where David and Christy Schuler live today. This is the first ranching operation established in western Nebraska. The next three nearest ranches are 60 miles west, 75 miles south, and another 100 miles to the east. Everything north was Indian land.

1875

Redington persuades his two brothers-in-law, Edmund Doran and Guy Laing, from New York state, to come west and homestead on "Lorren's Fork Creek". Brother-in-law Ed Doran establishes his ranch southwest of Redington's on the "Garvin Place" purchased by Schuler's in 1974. His other brother-in-law, Guy Laing and his brother Seymour homestead near a landmark now known as "Laing's Point" near the present-day Schuler Ranch headquarters. The log home they built still stands today. Besides cattle, the Laing brothers raise horses to sell back east in New York and to the US Army Cavalry at Fort Robinson.

1898

Guy Laing passes away and his widow sells the 4,000-acre Laing Brothers' Ranch to their hired hand, Fred Lindberg.

1927

Fred Wright from near Beatrice trades his eastern Nebraska farms and signs a mortgage with W.H. Randal for the now 5830-acre Laing Ranch. He also assumes the Filer cattle lease. For the next six years the Wright family bravely endures the wrath of western Nebraska's sub-zero temperatures, blizzards, floods, grasshoppers, and dust storms.

1947

H.C. "Ole" Olsen (Mary Lou's father) purchases the Laing Ranch from W.H. Randall for \$20 per acre. He also purchases the 363 head of Hereford cattle owned by John I. Filer.

1959

Darrell Schuler and Mary Louise Olsen marry at 20 years of age. They begin ranching and raising a family in western Nebraska on the Laing homestead.

1965

Darrell Schuler installs the first center-pivot irrigation system in Morrill County and begins raising corn and alfalfa to supplement the ranch's livestock

1976

Mary Lou begins keeping immaculate records on the ranch's seedstock herd and submits birth weight and weaning weight data on every registered animal born. This is nearly 20 years prior to Total Herd Reporting (THR) implementation by the RAAA in 1995 which still only requires a weaning weight for registration

1985

Butch Schuler and Susan Swedberg marry after dating through high school and college. An April snowstorm takes out the powerline to the ranch prior to the wedding. A tractor-driven generator provides power for the rehearsal dinner held in the sale barn.

This log cabin has stood near the present day Schuler headquarters since 1875.



1893

Many of the horses used in Buffalo Bill's Wild West Shows are purchased from the Laing Brothers. Guy helps his good friend William F. Cody finance the Wild West Show during the 1893 World's Columbian Exposition which was the official name of the Chicago's World Fair. Instead of forking over 50% of the 50-cent gate fee to the Fair's Committee of Ways and Means, Cody's manager leases 14 acres next to the park for the show. After 318 performances in Chicago, Cody purportedly leaves town with a million dollars in cash.

1908

Lindberg sells the ranch to W.H. Randall for \$32,000. He also sells all the cattle for \$10,000 but keeps about 200 head of horses. He uses the funds to purchase a neighboring 10,000-acre ranch. Randall leases the ranch to John I. Filer for over 35 years to run Hereford cows.

1933

The economy sinks, and Filer opts not to renew his lease with the Wrights. They have no choice but to sell the ranch back to Randall for the unpaid interest on their note.

1954

The Red Angus Association of America (RAAA) is formed by seven visionary breeders who use the breed to establish the beef industry's first performance registry.

1962

Schuler-Olsen Ranches, Inc. is established as a Nebraska corporation.

1976

Darrell and Mary Lou purchase Red Angus seedstock to raise bulls for the ranch's commercial Hereford cowherd and neighboring ranches.

1983

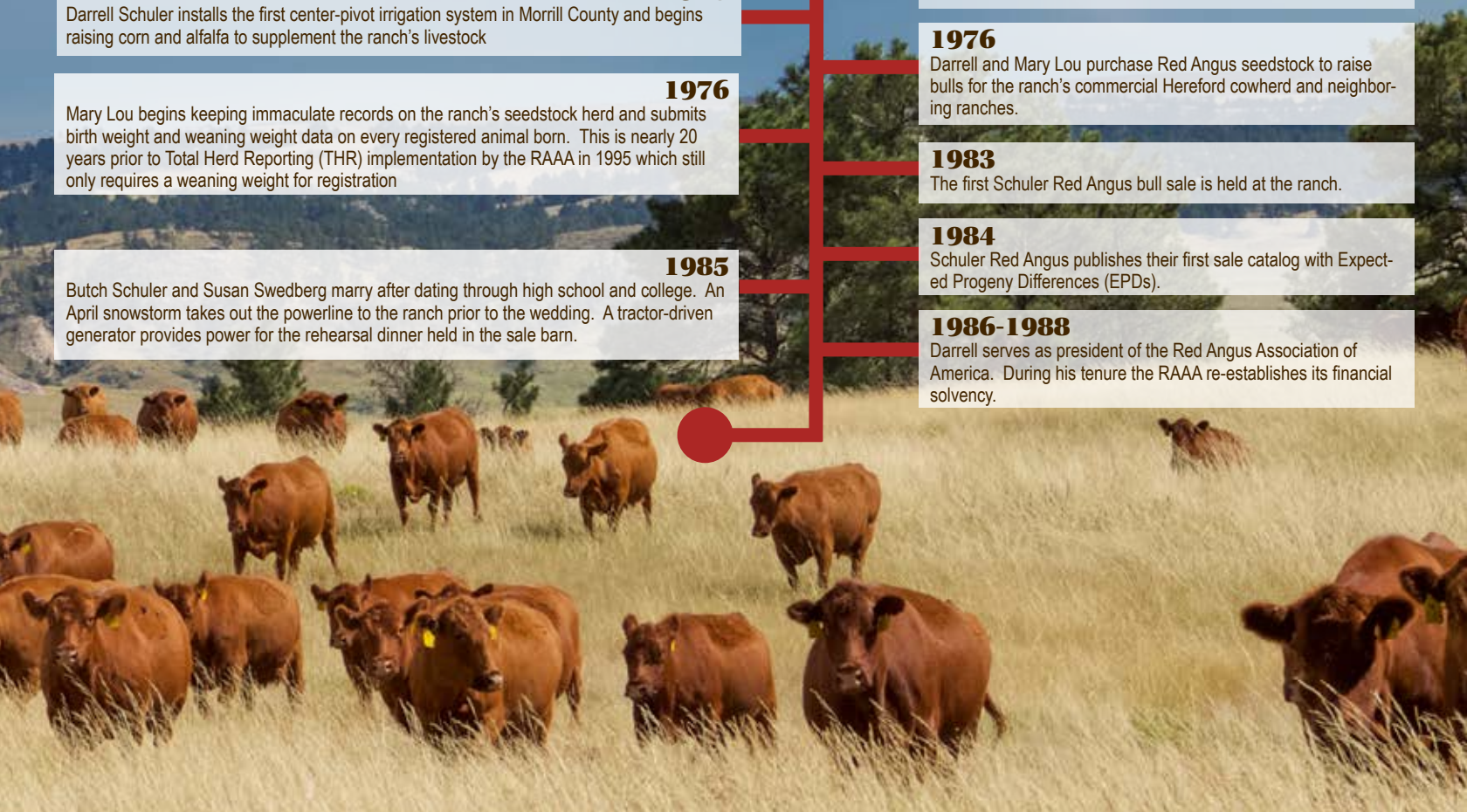
The first Schuler Red Angus bull sale is held at the ranch.

1984

Schuler Red Angus publishes their first sale catalog with Expected Progeny Differences (EPDs).

1986-1988

Darrell serves as president of the Red Angus Association of America. During his tenure the RAAA re-establishes its financial solvency.



SCHULER RED COMPOSITES

Schuler Red Composites have been bred and selected to be solid red, uniform in type and no larger in mature size than our purebred Red Angus. After more than three decades of development, our Schuler Reds have met our goals of allowing our customers to harvest heterosis and breed complements while maintaining the convenience traits of Red Angus.

The Schuler Red EPDs in this catalog are directly comparable to Red Angus.

Schuler Red	1/8's British	1/8th's Continental
71	7/8	1/8
62	6/8	2/8
53	5/8	3/8
44	4/8	4/8

Schuler Red Nomenclature:

You will notice the numbers 71, 62, 53 or 44 in the name of Schuler Red Composite bulls in this catalog; these numbers specify the approximate proportion (in eights) of British vs. Continental blood. The first number represents the eights of British influence and the second number represents Continental influence.

Why crossbreed? Heterosis, or hybrid vigor obtained through crossbreeding results in increased fertility & cow longevity. But, most importantly...improved profitability! Just three generations of straight breeding will result in an 87% loss of hybrid vigor for reproduction and production traits. Economically relevant traits of conception, survival and fitness are hit the hardest because they are lowly heritable and respond slowly to selection pressure. The US Meat Animal Research Center (USMARC) reports an increase in pounds of calf weaned per cow exposed of 8.5% by simply raising crossbred calves from straight bred cows over purebred commercial calves. Maternal heterosis is the additional gain expected by comparing crossbred cows to straight bred cows raising crossbred calves. **USMARC reports maternal heterosis will gain another 14.8% in cow efficiency, totaling the effects of individual and maternal heterosis at a 23.3% increase in pounds of calf weaned per cow exposed.** While some of that gain can be attributed to higher milk production, it is largely the result of cow longevity and vigor.



Schuler Red Composite Herd at Horsecamp

Why use composite bulls?

“User Friendly” - Composites like Schuler Reds are the simplest way to obtain the beneficial heterosis and breed complements available through crossbreeding. Schuler Reds eliminate the need to maintain multiple breeds of bulls and numerous breeding pastures for rotational mating systems.

Uniform Calf Crops - Use of Schuler Reds will result in less biological variation across the resultant calf crop than rotational systems utilizing two or more parent breeds.

Target calf value - Straight Angus cow herds can easily identify Schuler Red bulls that will result in 1/4, or 1/8th continental influence to benefit postweaning gain and yield grade while maintaining “Angus” marbling. Depending on their target market, Hybrid Baldy or SimAngus/Balancer herds can select Schuler Red bulls that will maintain 50:50 British:Continental influence or select Schuler Red 71's to raise the percentage of Angus.

“Given the powerful sire selection tools found in National Sire Evaluation programs there are certainly individual purebred commercial programs that are as productive as crossbred commercial programs because in low stress environments the advantages of hybrid vigor in that circumstance are small enough that purebreds can successfully compete. Thus, it would only take one drought year to blow the purebred commercial approach out of the water should it be used on an industry-wide basis.” - Jim Gosey, UNL Beef Specialist and Professor Emeritus

Schuler Reds - While our Schuler Red cattle were developed as a maternal composite to capture heterosis and breed complements, they will improve muscling and yield grade quickly as the average Yield Grade EPD of this offering ranks in the top 4% compared to the entire Red Angus breed.

Lot 130

SCHULER RED 62 DEFIANT-L746

It is impossible for one breed to do everything. Fortunately, we do not have to use just one breed. For over 30 years our Schuler Red Program has blended the calving ease, maternal, and quality traits of Red Angus with the red meat yield of Simmental. Schuler Reds will improve yield grades while boosting lifetime cow productivity. And they can do it without increasing cow size. Our lead-off bull, Schuler Red 62 Defiant-L746 has a CED to YW spread and Marbling EPD that compare favorably amongst even the front-end Red Angus bulls in this sale but with REA and Yield Grade outside the realm of most Red Angus bulls.



SCHULER RED 62 DEFIANT-L746

3/28/23 SII : L746
3 (50 AR, 25 SM) #4844590

5L BOURNE 117-48A

5L TRANSPORTER 4916-25F

5L ROSE 4104-4916

WS ALL ABOARD B80

SII SR44 ALL ABOARD G542

act. BW	84
WW ratio	107
ADG ratio	108
YW ratio	108
IMF ratio	108
REA ratio	110
adj. SC	37.3
Frame	Mod

ProS: 107 / 24%				HerdBuilder: 34 / 82%				GridMaster: 72 / 4%			
CED	BW	WW	ADG	YW	MLK	HPG	CEM	STY	MRB	YG	REA
14	-1.9	83	.29	130	21	14	7	9	.65	-.07	.49
29%	50%	2%	11%	4%	86%	12%	60%	96%	12%	5%	4%
Docility: 1		AoD: 4		dMPPA: 106		dam's CIV: \$4.41					



SCHULER RED 62 DEFIANCE-L778

4/4/23 SII : L778
3 (75.8 AR, 3.9GV, 3.9HH, 16.4SM) #4844332

5L BOURNE 117-48A

5L TRANSPORTER 4916-25F

5L ROSE 4104-4916

SCHULER RED 44 YUKON C261

SII SR53 YUKON-C261 E774

SII SR62 U571 X037

act. BW	83
WW ratio	99
ADG ratio	114
YW ratio	107
IMF ratio	112
REA ratio	104
adj. SC	37.5
Frame	Mod

ProS: 147 / 1%				HerdBuilder: 78 / 8%				GridMaster: 69 / 6%			
CED	BW	WW	ADG	YW	MLK	HPG	CEM	STY	MRB	YG	REA
13	-.6	82	.32	133	20	15	6	18	.58	-.01	.49
41%	74%	2%	5%	3%	93%	5%	66%	16%	20%	16%	4%
Docility: 2		AoD: 6		dMPPA: 102		dam's CIV: (\$27.89)					

Lot 131

SCHULER RED 62 DEFIANCE-L778

Our objective with the Schuler Red program is to produce genetics that complement our Red Angus program and provide ranchers with a user-friendly way to add heterosis to their cow herds while delivering additive genetic improvements for pay-weight, yield grade and muscularity. It is essential that we provide bulls that offer these genetic benefits without large swings in biological type, i.e. solid red hides, polledness, docility and moderate mature cow size. The Schuler Red Composite bulls offered in this 42nd annual sale are the most uniform to date, and include several standouts, like Lot 131. He delivers single digit ranks for heifer pregnancy rate, REA, Weaning, Yearling and ADG to go along with a significant dose of heterosis that will improve the lifetime productivity of your cowherd.



SCHULER RED COMPOSITES



Lot 132 - SCHULER RED 62 CRNSTONE-L763

133 **SCHULER RED 62 CRNSTONE-L759**
 3/30/23 SII : L759
 3 (73.8 AR, .4 GV, .4 HH, 25.4 SM) #4844348
 5L GENUINE 1603-195C
WEDEL CORNERSTONE 0224H
 WFL FRANKLY F8193
 HOOK'S YUKON 80Y
SII SR44 YUKON F843
 SII SR1B BRN CMT W908

act. BW	74
WW ratio	93
ADG ratio	103
YW ratio	98
IMF ratio	113
REA ratio	111
adj. SC	35.3
Frame	Mod-

ProS: 123 / 9%					HerdBuilder: 61 / 30%					GridMaster: 61 / 11%		
CED	BW	WW	ADG	YW	MLK	HPG	CEM	STY	MRB	YG	REA	
17	-4.3	69	.22	105	30	12	10	15	.69	-.23	.63	
5%	12%	22%	55%	35%	17%	41%	4%	53%	9%	1%	1%	
Docility: 1		AoD: 5		dMPPA: 97		dam's CIV: \$33.47						

Here is a 3/4 brother to Lot 132, who would provide nearly identical utility in terms of the degree of heterosis, calving ease, carcass merit and phenotype. Both are out of proven cows with a history of calving early and regularly each season.



132 **SCHULER RED 62 CRNSTONE-L763**
 3/31/23 SII : L763
 3 (70.5 AR, .4 GV, .4 HH, 28.7 SM) #4844254
 5L GENUINE 1603-195C
WEDEL CORNERSTONE 0224H
 WFL FRANKLY F8193
 HOOK'S YUKON 80Y
SII SR44 YUKON C548
 SII SR71 NEBULA P707 Y111

act. BW	81
WW ratio	99
ADG ratio	93
YW ratio	96
IMF ratio	95
REA ratio	100
adj. SC	33.9
Frame	Mod

ProS: 114 / 15%					HerdBuilder: 59 / 34%					GridMaster: 55 / 18%	
CED	BW	WW	ADG	YW	MLK	HPG	CEM	STY	MRB	YG	REA
17	-3.6	71	.22	106	31	14	10	14	.68	-.18	.51
7%	19%	17%	58%	33%	11%	11%	6%	65%	10%	1%	4%
Docility: 1		AoD: 8		dMPPA: 102		dam's CIV: \$38.45					

Lot 132 demonstrates that you can utilize heterosis and breed complements without losing calving ease, marbling or changing mature cow size. This Cornerstone son is deep ribbed and wide-based and will provide you with an outstanding set of replacement females.

134 **SCHULER RED 62 CRNSTONE-L774**
 4/3/23 SII : L774
 3 (75.4 AR, .4GV, .4 HH, 23.7 SM) #4844328
 5L GENUINE 1603-195C
WEDEL CORNERSTONE 0224H
 WFL FRANKLY F8193
 CDI ABUNDANCE 391C
SII SR44 ABUNDANCE-E762
 SII SR1B BRN CMT W908

act. BW	79
WW ratio	104
ADG ratio	87
YW ratio	96
IMF ratio	125
REA ratio	105
adj. SC	33.0
Frame	Mod-

ProS: 121 / 10%					HerdBuilder: 57 / 38%					GridMaster: 64 / 9%	
CED	BW	WW	ADG	YW	MLK	HPG	CEM	STY	MRB	YG	REA
14	-2.5	73	.24	112	34	14	9	13	.80	-.19	.55
32%	38%	11%	42%	21%	3%	10%	15%	71%	4%	1%	3%
Docility: 2		AoD: 6		dMPPA: 104		dam's CIV: (\$7.19)					

Cornerstone is a Genuine son, so it's no surprise that Lot 134 hit his IMF scan out of the park and comes with a Marbling EPD that competes with the best Red Angus bulls in the sale. Add in his elite ranks for Yield Grade and REA and you have a truly unique herd sire prospect.

135 **SCHULER RED 62 ENERGIZE-L714**
 2/26/23 SII : L714
 3 (77.4 AR, 20.0 SM) #4844670
 BIEBER CL ATOMIC C218
BIEBER CL ENERGIZE F121
 BIEBER CL ADELLE 575D
 KBHR SNIPER E036
SOR SR44 SNIPER-J201
 SOR BRASKA REBEL D202

act. BW	84
WW ratio	105
ADG ratio	114
YW ratio	110
IMF ratio	73
REA ratio	108
adj. SC	34.8
Frame	Mod+

ProS: 120 / 10%					HerdBuilder: 54 / 45%					GridMaster: 66 / 7%	
CED	BW	WW	ADG	YW	MLK	HPG	CEM	STY	MRB	YG	REA
16	-1.2	79	.33	132	29	13	8	13	.50	-.04	.48
12%	64%	4%	3%	3%	24%	18%	25%	73%	32%	8%	5%
Docility: 2		AoD: 2		dMPPA: 102		dam's CIV: 2-Yr-Old					

Lot 135 puts 11 traits in the top 25% which gives him one of the most balanced EPD profiles in the entire offering. If you need to add performance or need to improve Yield Grade this is the bull that can do it without falling out of bounds.

136

SCHULER RED 44 HLGR ONE-L730

3/22/23 SII : L730
3 (50.4 AR, .93 GV, .93 HH, 46.6 SM) #4844372

GW MOVIN ON 183C

GW HILGER ONE 454H

GW MISS YUKON JACK 913E

SCHULER RED 71 AMPED D303

SII SR62 AMPED F803

SII SR44 YUKON D637

act. BW	75
WW ratio	110
ADG ratio	118
YW ratio	114
IMF ratio	89
REA ratio	109
adj. SC	38.1
Frame	Mod

ProS: 161 / 1%					HerdBuilder: 94 / 2%					GridMaster: 68 / 6%		
CED	BW	WW	ADG	YW	MLK	HPG	CEM	STY	MRB	YG	REA	
17	-3.7	91	.35	147	28	13	8	18	.31	-.25	.89	
7%	19%	1%	1%	1%	32%	19%	38%	10%	76%	1%	1%	
Docility: 1		AoD: 5		dMPPA: 103		dam's CIV: \$14.61						

Switching gears now as we sell the first Schuler Red "44". These bulls have a higher percentage of Simmental influence, and provide a larger dose of heterosis to an angus based cowherd. You will notice many of these bulls, including lot 136, up the game considerably on weaning, yearling, ADG, REA and Yield Grade EPDs. If you have been straightbreeding British breeds for generations and are plagued by lower pay-weights and YG 4 discounts, these Schuler Red 44 bulls can fix that quickly.



Lot 136 - SCHULER RED 44 HLGR ONE-L730

137

SCHULER RED 44 HLGR ONE-L764

4/2/23 SII : L764
3 (52 AR, 4 GV, 4 HH, 46.0 SM) #4844380

GW MOVIN ON 183C

GW HILGER ONE 454H

GW MISS YUKON JACK 913E

SCHULER RED 71 AMPED D303

SII SR62 AMPED F810

SII SR44 BEEF MAKER D655

act. BW	96
WW ratio	100
ADG ratio	105
YW ratio	103
IMF ratio	116
REA ratio	107
adj. SC	35.4
Frame	Mod

ProS: 131 / 5%					HerdBuilder: 81 / 7%					GridMaster: 50 / 26%		
CED	BW	WW	ADG	YW	MLK	HPG	CEM	STY	MRB	YG	REA	
12	-.6	82	.27	126	26	13	5	18	.34	-.24	.69	
60%	74%	2%	22%	6%	53%	24%	87%	14%	69%	1%	1%	
Docility: 1		AoD: 5		dMPPA: 98		dam's CIV: \$17.02						

138

SCHULER RED 44 HLGR ONE-L742

3/28/23 SII : L742
3 (57.4 AR, 1.6 GV, 1.6 HH, 38.2 SM) #4844262

GW MOVIN ON 183C

GW HILGER ONE 454H

GW MISS YUKON JACK 913E

BIEBER REAL MCCOY Y124

SII SR62 REAL MCCOY C561

SII SR53 42S U825

act. BW	83
WW ratio	111
ADG ratio	109
YW ratio	110
IMF ratio	118
REA ratio	104
adj. SC	37.3
Frame	Mod

ProS: 152 / 1%					HerdBuilder: 97 / 1%					GridMaster: 56 / 18%		
CED	BW	WW	ADG	YW	MLK	HPG	CEM	STY	MRB	YG	REA	
11	.0	100	.32	152	26	17	7	16	.32	-.14	.80	
71%	83%	1%	4%	1%	51%	2%	42%	30%	74%	2%	1%	
Docility: 1		AoD: 8		dMPPA: 106		dam's CIV: \$21.29						

Lots 137 is a 3/4 brother to Lot 136 and Lot 138 is a half brother to both. The average YG EPD of these three ranks in the top 1% as does the average ribeye area. They also average Top 1% for weaning and Top 3% for Yearling weight.

2023

Schuler Red Composite herd July 2023.



SCHULER RED COMPOSITES



2023

Just add grass and water and Schuler Red composites will do the rest. This 3-year-old Schuler Red "44" cow was pictured in July of 2023. The 44 designation indicates 4/8ths Red Angus and 4/8ths continental.



Lot 140 - SCHULER RED 44 SNIPER-L775

141 **SCHULER RED 44 SNIPER-L743**
 3/28/23 SII : L743
 3 (47.82,AR2.15GV,1.37HH,48.06SM) #4844398
 BAR CK HUNTER 3006A
KBHR SNIPER E036
 KBHR C078
 SCHULER RED 62 42S D350
SII SR71 42S-D350 F828
 SII SR1B DEFENDER C504

act. BW	84
WW ratio	97
ADG ratio	91
YW ratio	94
IMF ratio	82
REA ratio	96
adj. SC	35.3
Frame	Mod-

ProS: 108 / 22%				HerdBuilder: 64 / 25%				GridMaster: 44 / 38%			
CED	BW	WW	ADG	YW	MLK	HPG	CEM	STY	MRB	YG	REA
16	-1.4	71	.22	107	23	13	10	14	.45	-.23	.59
9%	60%	16%	56%	31%	75%	22%	7%	66%	42%	1%	2%
Docility: 2		AoD: 5		dMPPA: 97		dam's CIV: (\$2.75)					

139 **SCHULER RED53 SNPR-J420-L334**
 3/23/23 SII : L334
 3 (63.4 AR, 1.5 GV, 1.5 HH, 33.4 SM) #4844462
 KBHR SNIPER E036
SCHULER RED 44 SNIPER-J420
 SII SR71 REBEL C505
 WFL RETAIL CUT F8107
SII SR62 RETAIL CUT H008
 SII SR53 YUKON-D336 F823

act. BW	62
WW ratio	91
ADG ratio	119
YW ratio	105
IMF ratio	109
REA ratio	105
adj. SC	33.1
Frame	Mod-

ProS: 131 / 5%				HerdBuilder: 80 / 7%				GridMaster: 52 / 24%			
CED	BW	WW	ADG	YW	MLK	HPG	CEM	STY	MRB	YG	REA
22	-6.8	69	.29	115	29	12	12	16	.39	-.11	.49
1%	1%	22%	13%	17%	24%	44%	1%	37%	57%	2%	4%
Docility: 3		AoD: 3		dMPPA: 94		dam's CIV: \$10.79					

The Sniper sire line brings unprecedented calving ease for a SimAngus sire, and as you can see by Lots 139 - 141, we do not lose any of the muscularity or Yield Grade advantage. These bulls also maintain highly competitive weaning and yearling weights without significant increases in frame size.

140 **SCHULER RED 44 SNIPER-L775**
 4/3/23 SII : L775
 3 (50.2 AR, .47 GV, .47 HH, 48.4 SM) #4844460
 BAR CK HUNTER 3006A
KBHR SNIPER E036
 KBHR C078
 WFL PROFITMAKER E7030
SII SR71 PROFITMAKER H007
 SII SR62 AMPED F803

act. BW	77
WW ratio	98
ADG ratio	119
YW ratio	108
IMF ratio	95
REA ratio	102
adj. SC	33.5
Frame	Mod

ProS: 128 / 6%				HerdBuilder: 62 / 29%				GridMaster: 66 / 7%			
CED	BW	WW	ADG	YW	MLK	HPG	CEM	STY	MRB	YG	REA
20	-4.5	76	.32	127	30	13	12	13	.41	-.26	.74
1%	10%	6%	5%	5%	16%	22%	1%	75%	52%	1%	1%
Docility: 2		AoD: 3		dMPPA: 102		dam's CIV: (\$20.86)					

This Sniper son delivers best 1% Calving Ease but mashes the pedal to the floor for weaning, yearling, ADG, REA and Yield Grade. It is a truly unique bull that can deliver this combination of antagonistic traits.

142 **SCHULER RED 71 CRNSTONE-L267**
 4/4/23 SII : L267
 3 (60.3 AR, .2 GV, .2 HH, 14.4 SM) #4844524
 5L GENUINE 1603-195C
WEDEL CORNERSTONE 0224H
 WFL FRANKLY F8193
 SCHULER RED 44 YUKON D336
SII SR62 YKN-D336 G553

act. BW	75
WW ratio	107
ADG ratio	97
YW ratio	102
IMF ratio	82
REA ratio	103
adj. SC	32.0
Frame	Mod+

ProS: 107 / 24%				HerdBuilder: 54 / 45%				GridMaster: 53 / 22%			
CED	BW	WW	ADG	YW	MLK	HPG	CEM	STY	MRB	YG	REA
18	-4.2	72	.24	111	31	15	11	10	.60	-.12	.39
3%	13%	14%	41%	24%	9%	5%	2%	93%	18%	2%	9%
Docility: 1		AoD: 4		dMPPA: 101		dam's CIV: \$22.11					

If you want to target quality grade and yield grade premiums at the same time, Lot 142 should get strong consideration. Especially since he balances 11 traits in the top 25%.

143

SCHULER RED 71 ENERGIZE-L709

2/22/23 SII : L709
 3 (86.6 AR, 3.1 GV, .7HH, 9.6 SM) #4844684
 BIEBER CL ATOMIC C218
BIEBER CL ENERGIZE F121
 BIEBER CL ADELLE 575D
 SCHULER RED 53 YKND336-G650

SII SR62 YKN36-G650-J278

act. BW	62
WW ratio	93
ADG ratio	101
YW ratio	97
IMF ratio	74
REA ratio	105
adj. SC	33.7
Frame	Mod

ProS: 106 / 26%				HerdBuilder: 47 / 59%				GridMaster: 58 / 14%			
CED	BW	WW	ADG	YW	MLK	HPG	CEM	STY	MRB	YG	REA
18	-4.7	62	.24	100	27	7	8	12	.46	-.02	.31
4%	9%	48%	45%	47%	41%	97%	23%	81%	40%	14%	18%
Docility: 2		AoD: 2		dMPPA: 97		dam's CIV: 2-Yr-Old					

Lot 143 is scurred.

144

SCHULER RED 71 TRNSPRTR-L706

2/19/23 SII : L706
 3 (83.9 AR, 2.0 GV, 2.0 HH, 12.2 SM) #4844542
 5L BOURNE 117-48A
5L TRANSPORTER 4916-25F
 5L ROSE 4104-4916
 SCHULER RED 71 AMPED D303

SII SR62 AMPED- J154

SII SR53 RUSH-B332 D664

act. BW	83
WW ratio	103
ADG ratio	87
YW ratio	95
IMF ratio	84
REA ratio	103
adj. SC	34.1
Frame	Mod

ProS: 93 / 45%				HerdBuilder: 61 / 31%				GridMaster: 32 / 64%			
CED	BW	WW	ADG	YW	MLK	HPG	CEM	STY	MRB	YG	REA
16	-2.1	72	.23	109	23	16	8	14	.53	.03	.14
12%	45%	13%	51%	27%	76%	4%	40%	56%	27%	29%	49%
Docility: 1		AoD: 2		dMPPA: 101		dam's CIV: 2-Yr-Old					

Lots 143 - 146 are Schuler Red 71's. These bulls are approximately 7/8 Red Angus and are typically created by breeding our Composite heifers to Red Angus bulls for their first calf. They will add a touch of continental to an otherwise angus-based cowherd but provide the least amount of heterosis of the Schuler Reds. They will still improve yield grade and often have a higher level of calving ease or marbling.

145

SCHULER RED 71 TRNSPRTR-L705

2/18/23 SII : L705
 1B (76.4 AR, .3GV, .3HH, 10.5 SM) #4844572
 5L BOURNE 117-48A
5L TRANSPORTER 4916-25F
 5L ROSE 4104-4916
 SCHULER RED 71 AMPED D303

SII SR62 AMPED- J103

SII SR62 YKN-D336-G548

act. BW	75
WW ratio	104
ADG ratio	94
YW ratio	99
IMF ratio	83
REA ratio	99
adj. SC	34.5
Frame	Mod

ProS: 91 / 49%				HerdBuilder: 48 / 57%				GridMaster: 42 / 41%			
CED	BW	WW	ADG	YW	MLK	HPG	CEM	STY	MRB	YG	REA
11	-3.3	70	.25	110	25	16	1	16	.61	.03	.13
79%	24%	19%	35%	24%	56%	3%	99%	37%	16%	31%	51%
Docility: 1		AoD: 2		dMPPA: 102		dam's CIV: 2-Yr-Old					

146

SCHULER RED 71 CRNSTONE-L710

2/22/23 SII : L710
 3 (80.4 AR 1.6 GV, 1.6 HH, 13.1 SM) #4844548
 5L GENUINE 1603-195C
WEDEL CORNERSTONE 0224H
 WFL FRANKLY F8193
 LCOC DECREE D003G

SII SR62 DECREE-J146

SII SR62 18 KARAT-E749

act. BW	83
WW ratio	100
ADG ratio	97
YW ratio	99
IMF ratio	109
REA ratio	94
adj. SC	34.7
Frame	Mod

ProS: 72 / 79%				HerdBuilder: 14 / 98%				GridMaster: 58 / 14%			
CED	BW	WW	ADG	YW	MLK	HPG	CEM	STY	MRB	YG	REA
9	-1.2	72	.26	114	27	11	3	11	.71	-.10	.35
91%	64%	13%	27%	17%	36%	52%	98%	88%	8%	3%	13%
Docility: 1		AoD: 2		dMPPA: 100		dam's CIV: 2-Yr-Old					

147

SCHULER RED 62 TRNSPRTR-L348

3/26/23 SII : L348
 3 (77.7 AR, 1.2 GV, 1.2 HH, 19.9 SM) #4844314
 5L BOURNE 117-48A
5L TRANSPORTER 4916-25F
 5L ROSE 4104-4916
 SCHULER RED 44 RSHMR B332

SII SR53 RSHMR-B332-E769

SII SR62 OMYGOODNESS B435

act. BW	78
WW ratio	101
ADG ratio	95
YW ratio	98
IMF ratio	109
REA ratio	92
adj. SC	36.7
Frame	Mod

ProS: 111 / 19%				HerdBuilder: 74 / 12%				GridMaster: 37 / 53%			
CED	BW	WW	ADG	YW	MLK	HPG	CEM	STY	MRB	YG	REA
16	-3.3	75	.26	116	24	17	8	15	.45	.01	.28
15%	24%	9%	31%	15%	66%	2%	40%	41%	42%	20%	22%
Docility: 2		AoD: 6		dMPPA: 102		dam's CIV: \$32.84					

148

SCHULER RED 62 CRNSTONE-L782

4/5/23 SII : L782
 3 (68.9 AR, 1.0 GV, 1.0 HH, 29.1 SM) #4844502
 5L GENUINE 1603-195C
WEDEL CORNERSTONE 0224H
 WFL FRANKLY F8193
 HOOK'S YUKON 80Y

SII SR44 YUKON H058

SII SR71 REBEL C505

act. BW	81
WW ratio	99
ADG ratio	107
YW ratio	103
IMF ratio	100
REA ratio	107
adj. SC	37.0
Frame	Mod

ProS: 113 / 17%				HerdBuilder: 56 / 40%				GridMaster: 57 / 16%			
CED	BW	WW	ADG	YW	MLK	HPG	CEM	STY	MRB	YG	REA
17	-2.5	77	.27	120	30	11	11	13	.56	-.19	.64
8%	38%	5%	25%	11%	14%	55%	3%	68%	22%	1%	1%
Docility: 1		AoD: 3		dMPPA: 100		dam's CIV: (\$23.67)					

With eight traits in the top 14% of the breed, including breed leading YG and REA predictions, Lot 148 could be the "sleeper" in our 2024 Schuler Red Composite bull offering. Check out his big spread from CED to YW and large scrotal.

SCHULER RED COMPOSITES

149 **SCHULER RED 62 CRNSTONE-L745**
 3/28/23 SII : L745
 3 (76.3 AR, 16.3 GV, .63 HH, 6.9 SM) #4844250
 5L GENUINE 1603-195C
WEDEL CORNERSTONE 0224H
 WFL FRANKLY F8193
 SLOVLCC HYBRID D626L
SII SR44 D626L C535
 SII SR44 14W Y140

act. BW	92
WW ratio	98
ADG ratio	90
YW ratio	94
IMF ratio	99
REA ratio	97
adj. SC	34.3
Frame	Mod

ProS: 87 / 56%				HerdBuilder: 38 / 76%				GridMaster: 48 / 29%			
CED	BW	WW	ADG	YW	MLK	HPG	CEM	STY	MRB	YG	REA
14	-1.8	67	.21	101	26	14	9	11	.56	-.19	.49
34%	51%	29%	62%	44%	54%	12%	19%	89%	22%	1%	4%
Docility: 1		AoD: 8		dMPPA: 97		dam's CIV: \$51.26					

The dam of Lot 149 earned her strong CIV by maintaining a 371-day calving interval over seven calves and having six of those born from the first A.I. service.

150 **SCHULER RED 62 MANDATE-L737**
 3/27/23 SII : L737
 3 (60.3 AR, 2.7 GV, 1.92 HH, 31.0 SM) #4844350
 LCOC DECREE D003G
SCHULER RED 53 MANDATE J389
 SIISR53 YUKON-C246 E776
 LEACHMAN 18 KARAT X235C
SII SR62 18 KARAT F832
 SII SR62 EPIC A335

act. BW	99
WW ratio	120
ADG ratio	93
YW ratio	107
IMF ratio	61
REA ratio	102
adj. SC	35.7
Frame	Mod+

ProS: 127 / 7%				HerdBuilder: 92 / 2%				GridMaster: 35 / 58%			
CED	BW	WW	ADG	YW	MLK	HPG	CEM	STY	MRB	YG	REA
12	.9	88	.27	131	28	16	7	16	.40	-.12	.52
60%	92%	1%	23%	3%	30%	4%	51%	27%	54%	2%	3%
Docility: 1		AoD: 5		dMPPA: 108		dam's CIV: \$28.41					

151 **SCHULER RED 62 GNG-L762**
 3/31/23 SII : L762
 3 (71.4 AR, 25 SM) #4844602
 SCHULER RANCH HAND F606
SCHULER GAIN N GRADE J876
 SOR BRASKA DOMAIN F953
 IR IMPERIAL D948
SII SR44 IMPERIAL H434

act. BW	70
WW ratio	95
ADG ratio	111
YW ratio	103
IMF ratio	124
REA ratio	94
adj. SC	35.9
Frame	Mod-

ProS: 135 / 3%				HerdBuilder: 72 / 14%				GridMaster: 63 / 10%			
CED	BW	WW	ADG	YW	MLK	HPG	CEM	STY	MRB	YG	REA
17	-3.4	73	.30	120	21	15	8	15	.50	-.05	.48
7%	23%	12%	10%	10%	86%	5%	26%	53%	32%	8%	5%
Docility: 2		AoD: 3		dMPPA: 95		dam's CIV: (\$11.99)					

This Gain in Grade son spreads the easiest calving 7% to the heaviest weaning 12%. Plus he has top 10% or better ranks for Heifer Pregnancy, ADG, yearling, Yield Grade and REA.

152 **SCHULER RED 62 CRNSTONE-L744**
 3/28/23 SII : L744
 3 (71.9 AR, 25 SM) #4844592
 5L GENUINE 1603-195C
WEDEL CORNERSTONE 0224H
 WFL FRANKLY F8193
 HOOK'S YUKON 80Y
SII SR44 YUKON H407

act. BW	78
WW ratio	94
ADG ratio	98
YW ratio	96
IMF ratio	105
REA ratio	93
adj. SC	36.3
Frame	Sml+

ProS: 103 / 29%				HerdBuilder: 37 / 77%				GridMaster: 66 / 7%			
CED	BW	WW	ADG	YW	MLK	HPG	CEM	STY	MRB	YG	REA
17	-3.0	68	.21	102	29	11	11	10	.66	-.19	.67
8%	29%	23%	65%	41%	25%	53%	3%	94%	12%	1%	1%
Docility: 2		AoD: 3		dMPPA: 100		dam's CIV: (\$5.25)					

153 **SCHULER RED 62 MANDATE-L735**
 3/26/23 SII : L735
 3 (58.1 AR, 8.2 GV, 7.4 HH, 23.8 SM) #4844198
 LCOC DECREE D003G
SCHULER RED 53 MANDATE J389
 SIISR53 YUKON-C246 E776
 SCHULER RED 62 S047 U571
SII SR62 U571 X037
 SCHULER RED 62 N138 R551

act. BW	95
WW ratio	108
ADG ratio	105
YW ratio	107
IMF ratio	95
REA ratio	100
adj. SC	35.7
Frame	Mod+

ProS: 119 / 11%				HerdBuilder: 75 / 11%				GridMaster: 44 / 38%			
CED	BW	WW	ADG	YW	MLK	HPG	CEM	STY	MRB	YG	REA
13	1.3	83	.26	124	25	10	9	17	.34	-.12	.67
53%	95%	2%	31%	7%	61%	82%	19%	20%	69%	2%	1%
Docility: 2		AoD: 13		dMPPA: 110		dam's CIV: \$21.45					

154 **SCHULER RED 62 TSP-1943-L720**
 3/17/23 SII : L720
 3 (78.0 AR, 20.0 SM) #4844660
 5L TRANSPORTER 4916-25F
SCHULER TRANSPORTER-1943
 SOR MARLEE AMPLIFY 8101F
 KBHR SNIPER E036
SOR SR44 SNIPER-J191
 SOR OT BRN CMMT E070

act. BW	75
WW ratio	97
ADG ratio	107
YW ratio	103
IMF ratio	125
REA ratio	93
adj. SC	33.4
Frame	Mod

ProS: 134 / 4%				HerdBuilder: 70 / 17%				GridMaster: 65 / 9%			
CED	BW	WW	ADG	YW	MLK	HPG	CEM	STY	MRB	YG	REA
18	-3.5	74	.27	116	28	14	10	14	.67	.01	.29
4%	21%	10%	26%	15%	28%	11%	9%	56%	11%	21%	20%
Docility: 2		AoD: 2		dMPPA: 99		dam's CIV: 2-Yr-Old					

Here with just over a dozen bulls to go we find one of the most balanced trait bulls in the entire offering. Lot 154 has 13 traits in the top 30% of the breed.

155

SCHULER RED 62 MANDATE-L736

3/26/23 SII : L736
3 (67.9 AR, 3.1 GV, 1.7 HH, 24.2 SM) #4844430

SCHULER RED 53 MANDATE J389

SIISR53 YUKON-C246 E776
5L TOPGUN 560-65B

SII SR62 TOPGUN-G925

SII SR53 FORCEFUL C563

act. BW	82
WW ratio	105
ADG ratio	91
YW ratio	98
IMF ratio	103
REA ratio	101
adj. SC	35.2
Frame	Mod

ProS: 139 / 3%					HerdBuilder: 96 / 1%				GridMaster: 43 / 39%		
CED	BW	WW	ADG	YW	MLK	HPG	CEM	STY	MRB	YG	REA
17	-3.1	73	.19	104	26	18	9	16	.55	-.17	.51
7%	26%	12%	74%	37%	52%	1%	11%	30%	24%	1%	4%
Docility: 2		AoD: 4		dMPPA: 100		dam's CIV: \$46.67					

156

SCHULER RED 44 HLGR ONE-L728

3/22/23 SII : L728
3 (50 AR, 6.3 GV, 6.3 HH, 36.3SM) #4844190

GW HILGER ONE 454H

GW MOVIN ON 183C
GW MISS YUKON JACK 913E
BROWN COMMITMENT S7206

SII SR62 BRN CMT W922

662

act. BW	87
WW ratio	99
ADG ratio	101
YW ratio	101
IMF ratio	65
REA ratio	80
adj. SC	36.1
Frame	Mod+

ProS: 125 / 8%					HerdBuilder: 68 / 19%				GridMaster: 57 / 16%		
CED	BW	WW	ADG	YW	MLK	HPG	CEM	STY	MRB	YG	REA
12	-.8	75	.23	112	25	9	6	15	.50	-.04	.29
64%	71%	8%	49%	20%	56%	91%	69%	51%	32%	10%	20%
Docility: 2		AoD: 14		dMPPA: 99		dam's CIV: \$31.97					

157

SCHULER RED 44 HLGR ONE-L731

3/25/23 SII : L731
3 (52.9 AR, 6.3 GV, 3.2 HH, 36.5 SM) #4844252

GW HILGER ONE 454H

GW MOVIN ON 183C
GW MISS YUKON JACK 913E
SCHULER RED 62 EPIC A547

SII SR62 EPIC-A547 C544

SII SR62 W251 Y136

act. BW	84
WW ratio	102
ADG ratio	106
YW ratio	104
IMF ratio	126
REA ratio	89
adj. SC	36.7
Frame	Mod+

ProS: 160 / 1%					HerdBuilder: 97 / 1%				GridMaster: 63 / 10%		
CED	BW	WW	ADG	YW	MLK	HPG	CEM	STY	MRB	YG	REA
14	-2.7	79	.27	123	26	14	7	17	.47	-.12	.50
30%	34%	4%	21%	8%	46%	9%	45%	19%	38%	2%	4%
Docility: 2		AoD: 8		dMPPA: 97		dam's CIV: \$10.07					

158

SCHULER RED 44 HLGR ONE-L756

3/30/23 SII : L756
3 (49.8 AR, 5.5 GV, 1.6 HH, 41.9 SM) #4844234

GW HILGER ONE 454H

GW MOVIN ON 183C
GW MISS YUKON JACK 913E
LEACHMAN INSTIGATOR U349Z

SII SR62 INSTIGATOR B443

SII SR62 U512 X036

act. BW	95
WW ratio	102
ADG ratio	103
YW ratio	103
IMF ratio	81
REA ratio	109
adj. SC	34.3
Frame	Mod

ProS: / %					HerdBuilder: 98 / 1%				GridMaster: / %		
CED	BW	WW	ADG	YW	MLK	HPG	CEM	STY	MRB	YG	REA
12	.4	83	.27	126	28	15	7	20	.28	-.19	.67
68%	88%	2%	22%	5%	28%	8%	53%	4%	83%	1%	1%
Docility: 2		AoD: 9		dMPPA: 102		dam's CIV: \$17.05					

Lots 157 - 159 are half-brothers to the strong sire group that sold 20 lots earlier, and like them these Hilger One sons are loaded with the genetics to increase Ribeye area, improve yield grade and add pay-weight.

Lot 158 is scoured.

159

SCHULER RED 44 HLGR ONE-L738

3/27/23 SII : L738
3 (50.0 AR, 7.4 GV, 1.2 HH, 41.1 SM) #4844400

GW HILGER ONE 454H

GW MOVIN ON 183C
GW MISS YUKON JACK 913E
SCHULER RED 62 42S D350

SII SR62 42S-D350 F817

SII SR53 D626L C522

act. BW	103
WW ratio	113
ADG ratio	98
YW ratio	106
IMF ratio	106
REA ratio	94
adj. SC	36.7
Frame	Mod+

ProS: 145 / 2%					HerdBuilder: 98 / 1%				GridMaster: 47 / 33%		
CED	BW	WW	ADG	YW	MLK	HPG	CEM	STY	MRB	YG	REA
10	1.7	92	.29	138	24	15	6	18	.29	-.20	.79
86%	96%	1%	13%	1%	67%	6%	70%	15%	81%	1%	1%
Docility: 1		AoD: 5		dMPPA: 104		dam's CIV: \$35.13					



Our digital scales facilitate low stress cattle handling and accurate data collection.

160**SCHULER RED 62 GNG-L776**4/3/23 SII : L776
3 (73.7 AR, 25 SM) #4844514

SCHULER RANCH HAND F606

SCHULER GAIN N GRADE J876

SOR BRASKA DOMAIN F953

IR IMPERIAL D948

SOR SR44 IMPERIAL H442

SOR OT RELEVANCE E091

act. BW	79
WW ratio	105
ADG ratio	85
YW ratio	96
IMF ratio	88
REA ratio	96
adj. SC	35.5
Frame	Mod

ProS: 127 / 6%					HerdBuilder: 88 / 3%				GridMaster: 39 / 49%		
CED	BW	WW	ADG	YW	MLK	HPG	CEM	STY	MRB	YG	REA
16	-2.8	72	.25	111	24	18	8	18	.50	-.01	.34
13%	32%	13%	39%	22%	65%	1%	26%	13%	32%	15%	14%
Docility: 1		AoD: 3		dMPPA: 99		dam's CIV: (\$28.64)					

161**SCHULER RED53 SNPR-J420-L715**2/27/23 SII : L715
3 (29.9 AR, 4.1 GV, 2.5 HH, 33.1 SM) #4844668

KBHR SNIPER E036

SCHULER RED 44 SNIPER-J420

SII SR71 REBEL C505

RISSINGTON BULLSEYE 135159

SII SR62 BULLSEYE-J198

act. BW	82
WW ratio	116
ADG ratio	92
YW ratio	103
IMF ratio	121
REA ratio	100
adj. SC	35.8
Frame	Mod+

ProS: / %					HerdBuilder: 52 / 49%				GridMaster: / %		
CED	BW	WW	ADG	YW	MLK	HPG	CEM	STY	MRB	YG	REA
17	-.8	80	.23	116	28	5	11	11	.41	-.11	.51
8%	71%	3%	54%	15%	27%	98%	2%	90%	52%	3%	4%
Docility: 2		AoD: 2		dMPPA: 106		dam's CIV: 2-Yr-Old					

**Lot 162 - SCHULER RED 62 MTCHMKR-L708****162****SCHULER RED 62 MTCHMKR-L708**2/21/23 SII : L708
3 (77.6 AR, 20.0 SM) #4844676

WFL PROFITMAKER E7030

SCHULER MATCHMAKER 1974

SOR SHASTALADY HORIZON 5381C

KBHR SNIPER E036

SOR SR44 SNIPER-J208

SOR BRASKA OT13 B116

act. BW	80
WW ratio	98
ADG ratio	107
YW ratio	103
IMF ratio	89
REA ratio	99
adj. SC	32.1
Frame	Mod+

ProS: 90 / 50%					HerdBuilder: 57 / 38%				GridMaster: 33 / 62%		
CED	BW	WW	ADG	YW	MLK	HPG	CEM	STY	MRB	YG	REA
13	-.6	75	.26	115	31	15	7	13	.40	-.03	.20
45%	74%	9%	32%	16%	13%	8%	42%	76%	54%	10%	36%
Docility: 1		AoD: 2		dMPPA: 99		dam's CIV: 2-Yr-Old					

**David & Stephanie preg checking cows****163****SCHULER RED 62 TRNSPRTR-L750**3/29/23 SII : L750
3 (72.6 AR, 3.8 GV, 2.3 HH, 21.4 SM) #4844326

5L BOURNE 117-48A

5L TRANSPORTER 4916-25F

5L ROSE 4104-4916

SCHULER RED 44 YUKON C246

SIISR53 YUKON-C246 E776

SII SR53 42S W248

act. BW	99
WW ratio	110
ADG ratio	85
YW ratio	98
IMF ratio	111
REA ratio	97
adj. SC	37.3
Frame	Mod+

ProS: 128 / 6%					HerdBuilder: 88 / 3%				GridMaster: 40 / 47%		
CED	BW	WW	ADG	YW	MLK	HPG	CEM	STY	MRB	YG	REA
11	1.4	85	.24	123	23	18	6	18	.56	-.05	.46
77%	95%	1%	46%	8%	72%	1%	78%	14%	22%	7%	5%
Docility: 1		AoD: 6		dMPPA: 106		dam's CIV: \$30.93					

164

SCHULER RED 62 TSP-1943-L718

3/9/23 SII : L718
3 (76.9 AR, .4 GV, .4 HH, 22.1 SM) #4844536

5L TRANSPORTER 4916-25F

SCHULER TRANSPORTER-1943

SOR MARLEE AMPLIFY 8101F

KBHR SNIPER E036

SII SR44 SNIPER-J184

SII SR71 DYNASTY D612

act. BW	72
WW ratio	99
ADG ratio	98
YW ratio	98
IMF ratio	107
REA ratio	100
adj. SC	36.7
Frame	Mod+

ProS: 120 / 11%				HerdBuilder: 69 / 18%				GridMaster: 51 / 25%			
CED	BW	WW	ADG	YW	MLK	HPG	CEM	STY	MRB	YG	REA
18	-3.4	71	.25	112	26	13	10	16	.58	-.04	.33
3%	23%	15%	34%	22%	49%	25%	5%	39%	20%	8%	15%
Docility: 1		AoD: 2		dMPPA: 100		dam's CIV: 2-Yr-Old					

165

SCHULER RED 62 TSP-1943-L717

3/8/23 SII : L717
3 (76.7 AR, 20.0 SM) #4844658

5L TRANSPORTER 4916-25F

SCHULER TRANSPORTER-1943

SOR MARLEE AMPLIFY 8101F

KBHR SNIPER E036

SOR SR44 SNIPER-J190

SOR BRSKA OT CMT Z707

act. BW	66
WW ratio	98
ADG ratio	92
YW ratio	95
IMF ratio	119
REA ratio	87
adj. SC	37.1
Frame	Mod

ProS: 114 / 16%				HerdBuilder: 63 / 27%				GridMaster: 51 / 25%			
CED	BW	WW	ADG	YW	MLK	HPG	CEM	STY	MRB	YG	REA
19	-5.1	68	.22	103	26	14	10	14	.67	.02	.15
2%	6%	25%	59%	40%	45%	14%	7%	61%	11%	24%	47%
Docility: 2		AoD: 2		dMPPA: 99		dam's CIV: 2-Yr-Old					

166

SCHULER RED 62 GNG-L785

4/7/23 SII : L785
3 (67.7 AR, .59 GV, .3 HH, 29.9 SM) #4844506

SCHULER RANCH HAND F606

SCHULER GAIN N GRADE J876

SOR BRASKA DOMAIN F953

IR IMPERIAL D948

SII SR35 IMPERIAL H065

SII SR62 18 KARAT-E750

act. BW	100
WW ratio	111
ADG ratio	86
YW ratio	99
IMF ratio	69
REA ratio	114
adj. SC	36.6
Frame	Mod

ProS: 118 / 13%				HerdBuilder: 75 / 11%				GridMaster: 43 / 40%			
CED	BW	WW	ADG	YW	MLK	HPG	CEM	STY	MRB	YG	REA
11	1.3	84	.29	130	23	18	5	18	.53	-.03	.39
76%	95%	1%	13%	4%	73%	1%	91%	14%	27%	10%	9%
Docility: 1		AoD: 3		dMPPA: 103		dam's CIV: (\$31.96)					

167

SCHULER RED 62 MANDATE-L772

4/3/23 SII : L772
3 (64.8 AR, 3.6 GV, 2.8 HH, 26.3 SM) #4844464

LCOC DECREE D003G

SCHULER RED 53 MANDATE J389

SIISR53 YUKON-C246 E776

WFL RETAIL CUT F8107

SII SR62 RETAIL CUT H011

SII SR53 YUKON-D336 F853

act. BW	92
WW ratio	98
ADG ratio	97
YW ratio	98
IMF ratio	78
REA ratio	99
adj. SC	34.5
Frame	Mod

ProS: 108 / 23%				HerdBuilder: 79 / 8%				GridMaster: 29 / 70%			
CED	BW	WW	ADG	YW	MLK	HPG	CEM	STY	MRB	YG	REA
14	-.9	78	.23	115	28	14	7	17	.39	-.18	.59
30%	68%	5%	51%	16%	33%	13%	45%	26%	57%	1%	2%
Docility:		AoD: 3		dMPPA: 99		dam's CIV: (\$11.77)					



*Thanks to all who bought, bid and attended our 42nd Annual production Sale.
Join us for our 43rd
Thursday, March 27, 2025*

SCHULER RED ANGUS



Ref. Sire **WEDEL CORNERSTONE 0224H**
 02-18-2020 WTY : 224
 1A (100% AR) #4299641
SIRE: 5L GENUINE 1603-195C
MGS: WFL MERLIN 018A

ProS: 89 / 48%				HerdBuilder 19 / 89%				GridMaster: 70 / 9%			
CED	BW	WW	ADG	YW	MLK	HPG	CEM	STY	MRB	YG	REA
18	-4.8	72	.28	116	33	13	13	8	.88	-.10	.39
5%	9%	21%	27%	22%	6%	29%	1%	97%	3%	6%	15%
Lots Sired	1,2,3,12,13,31,32,33,50,51,52,69,70,71,88,89,90,102,132,133,134,142,146,148,149,152										



Ref. Sire **5L TRANSPORTER 4916-25F**
 01-29-2018 FLR : 25F
 1A (100% AR) #3948627
SIRE: 5L BOURNE 117-48A
MGS: 5L RIGHT DESIGN 5652-213B

ProS: 130 / 9%				HerdBuilder 67 / 24%				GridMaster: 64 / 14%			
CED	BW	WW	ADG	YW	MLK	HPG	CEM	STY	MRB	YG	REA
16	-3.8	73	.27	117	19	16	6	17	.91	.19	.01
19%	19%	19%	28%	22%	90%	6%	70%	27%	3%	89%	71%
Lots Sired	4,5,6,14,15,16,17,18,27,28,30,40,41,42,43,58,59,60,72,73,91,92,93,104,105,106,107,125,130,131,144,145,147,163										



Ref. Sire **BIEBER JUMPSTART J137**
 01-20-2021 RAB : J137
 1A (100% AR) #4463653
SIRE: BIEBER CL ENERGIZE F121
MGS: GMRA TRINITY 5222

ProS: 102 / 32%				HerdBuilder 52 / 48%				GridMaster: 50 / 28%			
CED	BW	WW	ADG	YW	MLK	HPG	CEM	STY	MRB	YG	REA
18	-3.8	95	.40	160	29	18	10	14	.43	.10	.44
6%	19%	1%	1%	1%	29%	2%	11%	58%	47%	61%	12%
Lots Sired	7,20,21,57,77,79										



Ref. Sire **BIEBER CL ENERGIZE F121**
 01-12-2018 1CLRA : F121
 1A (100% AR) #3958815
SIRE: BIEBER CL ATOMIC C218
MGS: BIEBER HARD DRIVE Y120

ProS: 111 / 22%				HerdBuilder 47 / 56%				GridMaster: 64 / 13%			
CED	BW	WW	ADG	YW	MLK	HPG	CEM	STY	MRB	YG	REA
17	-5.3	65	.30	113	29	15	7	13	.55	.02	.37
10%	6%	42%	15%	27%	23%	10%	57%	68%	28%	26%	17%
Lots Sired	8,37,38,39,55,56,78,110,135,143										



Ref. Sire **LSF SRR KING ARTHUR 0136H**
 01-25-2020 LNCC : 0136H
 1A (100% AR) #4275753
SIRE: WFL MERLIN 018A
MGS: BROWN JYJ REDEMPTION Y1334

Ref. Sire **SCHULER MATCHMAKER 1974**
 03-18-2021 SOR : 1974
 1A (100% AR) #4489875
SIRE: WFL PROFITMAKER E7030
MGS: SCHULER HORIZON 3309A

ProS: 66 / 75%				HerdBuilder 26 / 83%				GridMaster: 40 / 44%			
CED	BW	WW	ADG	YW	MLK	HPG	CEM	STY	MRB	YG	REA
16	-4.6	93	.35	149	32	10	9	10	.64	.01	.24
15%	11%	1%	5%	2%	9%	75%	20%	89%	17%	22%	31%
Lots Sired		9,10,19,34,35,36,62,63,75,76,95,103,119,129									

ProS: 65 / 76%				HerdBuilder 50 / 51%				GridMaster: 15 / 83%			
CED	BW	WW	ADG	YW	MLK	HPG	CEM	STY	MRB	YG	REA
10	-2.1	72	.22	108	35	15	4	14	.53	.09	-.06
80%	44%	20%	61%	36%	2%	14%	91%	53%	30%	58%	82%
Lots Sired		11,22,23,48,49,80,81,82,108,109,115,116,120,121,123,162									

Ref. Sire **SCHULER TRANSPORTER-1943**
 03-05-2021 SOR : 1943
 1A (100% AR) #4489577
SIRE: 5L TRANSPORTER 4916-25F
MGS: SCHULER AMPLIFY 6206D



ProS: 116 / 18%				HerdBuilder 59 / 36%				GridMaster: 57 / 20%			
CED	BW	WW	ADG	YW	MLK	HPG	CEM	STY	MRB	YG	REA
19	-6.1	78	.28	123	28	15	9	15	.70	.14	.14
4%	3%	10%	25%	14%	36%	10%	24%	52%	12%	77%	46%
Lots Sired		29,44,154,164,165									

Ref. Sire **SCHULER TRANSPORTER-J862**
 03-11-2021 SOR : J862
 1B (97.5% AR 2.5% XX) #4489705
SIRE: 5L TRANSPORTER 4916-25F
MGS: SCHULER AMPLIFY 6206D

Ref. Sire **SCHULER GAIN N GRADE J876**
 03-15-2021 SOR : J876
 1B (98.9% AR 1.1% XX) #4489961
SIRE: SCHULER RANCH HAND F606
MGS: 3SCC DOMAIN A163

ProS: 130 / 9%				HerdBuilder 63 / 29%				GridMaster: 66 / 11%			
CED	BW	WW	ADG	YW	MLK	HPG	CEM	STY	MRB	YG	REA
12	-2.3	71	.30	119	23	16	5	16	.71	.07	.18
56%	41%	25%	15%	19%	71%	7%	83%	39%	11%	45%	39%
Lots Sired		61,94,117									

ProS: 101 / 32%				HerdBuilder 67 / 24%				GridMaster: 35 / 53%			
CED	BW	WW	ADG	YW	MLK	HPG	CEM	STY	MRB	YG	REA
13	-.7	87	.35	143	27	14	5	18	.37	.14	.20
44%	68%	3%	4%	3%	43%	21%	77%	14%	59%	79%	36%
Lots Sired		24,25,26,45,46,47,65,66,67,68,84,85,86,87,98,99,100,124,151,160,166									



GW HILGER ONE 454H

02-29-2020 : 454H
SimAngus (37.5% AR 60% SM) #4727391

SIRE: GW MOVIN ON 183C

MGS: GW YUKON JACK 612B

ProS: 176 / 1%				HerdBuilder 102 / 2%				GridMaster: 74 / 7%			
CED	BW	WW	ADG	YW	MLK	HPG	CEM	STY	MRB	YG	REA
11	-.1	101	.34	156	26	12	5	20	.39	-.23	.93
67%	76%	1%	5%	1%	47%	48%	84%	5%	55%	3%	2%
Lots Sired		136,137,138,156,157,158,159									



KBHR SNIPER E036

03-17-2017 E036
SimAngus (18.8% AR 80.1% SM) #4339887

SIRE: BAR CK HUNTER 3006A

MGS: GW REDESTINED 642X

ProS: 126 / 11%				HerdBuilder 58 / 37%				GridMaster: 68 / 10%			
CED	BW	WW	ADG	YW	MLK	HPG	CEM	STY	MRB	YG	REA
20	-2.2	77	.26	119	26	13	12	12	.49	-.38	.90
2%	43%	11%	34%	18%	48%	35%	2%	82%	37%	2%	2%
Lots Sired		140,141									



SCHULER RED 53 MANDATE J389

03-29-2021 SII : J389
3 (53.3% AR, 32.1% SM, 1.7% GV, 0.9% HH) #4492653

SIRE: LCOC DECREE D003G

MGS: SCHULER RED 44 YUKON C246

ProS: 132 / 8%				HerdBuilder 100 / 2%				GridMaster: 32 / 57%			
CED	BW	WW	ADG	YW	MLK	HPG	CEM	STY	MRB	YG	REA
15	-.5	87	.23	124	25	14	9	19	.39	-.25	.76
29%	71%	3%	56%	13%	57%	18%	23%	11%	55%	3%	3%
Lots Sired		150,153,155,167									



SCHULER COURIER J859

03-10-2021 SOR : J859
1B (99.9% AR 0.1% XX) #4489857

SIRE: 5L TRANSPORTER 4916-25F

MGS: SCHULER AMPLIFY 6206D

ProS: 120 / 15%				HerdBuilder 55 / 43%				GridMaster: 65 / 12%			
CED	BW	WW	ADG	YW	MLK	HPG	CEM	STY	MRB	YG	REA
11	-.9	86	.33	138	22	15	4	16	.67	.09	.21
67%	65%	4%	8%	4%	76%	10%	91%	40%	14%	56%	35%
Lots Sired		54,97,127									



SCHULER COMBO-J870

03-13-2021 SOR : J870
1B (99.7% AR 0.3% XX) #4489761

SIRE: SCHULER COMBO G047

MGS: 5L DOUBLE DESIGN 1177-227W

ProS: 109 / 24%				HerdBuilder 68 / 22%				GridMaster: 41 / 42%			
CED	BW	WW	ADG	YW	MLK	HPG	CEM	STY	MRB	YG	REA
13	-1.3	89	.32	140	30	15	7	18	.33	.09	.32
46%	58%	3%	10%	4%	18%	13%	54%	19%	66%	56%	21%
Lots Sired		64,96,114									



SCHULER DISCIPLINE-1965

03-16-2021 SOR : 1965
1B (99.9% AR 0.1% XX) #4489991

SIRE: SCHULER DISCIPLINE 8506F

MGS: 5L DEFENDER 560-30Z

ProS: 95 / 40%				HerdBuilder 50 / 51%				GridMaster: 45 / 36%			
CED	BW	WW	ADG	YW	MLK	HPG	CEM	STY	MRB	YG	REA
10	.3	79	.30	128	30	14	4	17	.44	.01	.27
83%	81%	9%	14%	9%	17%	18%	88%	28%	45%	22%	27%
Lots Sired		83,112,126									

Spring Calving Commercial Bred Heifers

We sell commercial bred heifers annually that are developed on the ranch alongside our own replacements. They are AI bred, typically to high accuracy calving ease bulls that we have tested in our own herd, then exposed to Red Angus calving ease bulls. The heifers are available shortly after pregnancy determination in the early fall. These heifers have made us many friends through the years with their excellent dispositions.

Call or check our website for updates.

www.schulerredangus.com



We invite our customers to brand our sale barn on the day of the sale. Come enjoy the sale day, and leave your mark!

Sale Terms:

1. Guarantee & Insurance:

All the bulls in this sale have been semen tested and evaluated for soundness. They are guaranteed to be breeders for the first season but are not insured for death or injuries sustained from other bulls. Please purchase insurance if you desire further risk protection.

2. Genetic Defects:

No cattle in this sale are known carriers for any lethal genetic defects and any animals containing a known lethal genetic defect carrier in their two generation pedigree (without an intervening tested free animal) have been tested free by a Red Angus Association approved laboratory for said genetic defect and have met the Red Angus Association's requirements for registration. Refund of the animal's purchase price or replacement with an animal of equivalent value within one year of the sale date will be considered satisfactory settlement in the case of incorrect genetic defect information provided at the time of the sale.

3. Health:

The cattle were vaccinated with Alpha CD at birth and Alpha-7/MB-1 and InForce 3 were administered at branding. Prior to weaning they received Bovi-Shield Gold One Shot. After weaning they were vaccinated with Bovi-Shield Gold 5 and a 7-way. At yearling, the bulls were revaccinated with Bovi-Shield Gold 5. They have received ivermectrin and pyrethroid products at appropriate times for lice and fly control. Every bull in the sale has passed a complete breeding soundness evaluation by Dr. Calvin Tolsted of Alliance Animal Clinic. The bulls have been fed a balanced, high roughage ration since weaning with no vitamins or minerals injected. Their feet have never been trimmed.

4. Retained interest bulls:

Schuler Red Angus is selling full possession and ½ revenue-sharing semen interest in every bull in the sale. You receive possession and full salvage value of the bull and we receive the right to 50% of the semen sales revenue as well as the right to collect semen on the bull at our expense (and your convenience) for in-herd use and private semen sales. Exclusive semen marketing rights and guarantees regarding freezable semen quality may be negotiated between buyer and seller prior to sale.

5. Schuler Red Angus 42nd Annual Production Sale:

Will be conducted according to the terms and conditions as suggested by the Red Angus Association of America (RAAA), with the exceptions specified in items 1-4 above which will take precedence over all the RAAA suggested Terms and Conditions. Everyone attending the sale does so at their own risk. Schuler-Olsen Ranches, Inc, Schuler Red Angus, the sale staff, auctioneer, and other personnel assume no liability, legal or otherwise for damages of any kind.



Schuler Red Angus
7522 Rd 74
Bridgeport, NE 69336
schulerredangus.com



42nd Annual Bull Sale
March 28, 2024 • Bridgeport, Nebraska
162 Registered Red Angus & Schuler Red Composite Bulls